

# BROWN COUNTY EMERGENCY SUPPORT FUNCTION (ESF) 11

## Agriculture and Natural Resources

**LEAD COORDINATING AGENCY:** Extension Brown County - Agriculture

**SUPPORT AGENCIES:** Brown County Sheriff's Department

Brown County Health/Human Services Department  
Brown County Land and Water Conservation Department  
Brown County Highway Department  
Wisconsin Veterinary Corps  
Brown Humane Society  
Brown County Emergency Management  
Department of Natural Resources (DNR)  
Natural Resources Conservation Service  
Farm Service Agency  
Occupational Safety and Health Administration

### I. INTRODUCTION

#### A. Purpose

The purpose of ESF 11 is to coordinate and support county, local, and tribal authorities' efforts to respond effectively to an incident involving agriculture, food, natural or cultural resources and provide a process to integrate State and federal ESF 11 response/recovery actions.

#### B. Scope

Provides for a coordinated response to incidents involving food, agricultural, cultural or natural resources in Brown County by identifying roles and responsibilities of various county and local agencies with statutory and/or emergency management-based responsibilities and assets to support response and recovery operations including:

1. control and eradicate or manage foreign animal diseases (including infectious, non-infectious and zoonotic diseases)
2. control and eradicate or manage exotic plant diseases
3. control and eradicate or manage exotic pest infestations
4. assurance of food safety and nutrition assistance;

5. protect natural and cultural resources and historic properties (NCH) resources prior to, during, and/or after a disaster.

## **II. POLICIES**

Brown County ESF 11 coordinates the response and recovery activities of Brown County with local, state, federal and private agencies during an incident that involves agricultural and/or natural or cultural resources.

## **III. CONCEPT OF OPERATIONS**

Implementation of ESF 11 will be a State directed process. County implementation of ESF 11 will be based on a notification by one of the primary state or federal ESF 11 agencies. Brown County Emergency Management is responsible for notification and activation of ESF-11 resources and the Emergency Operation Center (EOC) as needed. Emergency Management will normally designate a representative from Extension Brown County- Agriculture to act as the ESF-11 Coordinator operating either remotely or in the EOC.

Local officials, governmental and non-governmental agencies will be actively involved in the response and will be utilized. Each county and local government has a Local Emergency Response Plan, which provides the framework for the jurisdiction's response to an emergency or disaster. County and local emergency managers/directors may utilize their resources and provide additional lines of communication with and for local producer/processors and the local Cooperative Extension Service.

The County Executive will maintain direction and control of governmental activities, declare a county emergency through the normal process described in the Local Emergency Response Plan, and provide local resources as available.

### **A. General**

1. County, local and tribal response activities focus on meeting response and recovery activities by committing human, financial and material resources to the impacted area, as appropriate.
2. Recovery efforts are initiated concurrently with response activities. Close coordination is required among the federal, state, county, local, tribal and volunteer agencies responsible for response and recovery operations.
3. Brown County Emergency Management will designate an ESF 11 Coordinator during an activation of the County EOC and will coordinate the locally provided resources with DATCP and other appropriate county, state, and private organization resources.

State ESF 11 staff will coordinate with Federal ESF 11 counterparts.

4. ESF 11 functions are divided into five main areas. The principal activities for each functional area are described in the following sections.

a. Foreign animal disease surveillance and response. This includes the implementation of an integrated federal, state, local, and tribal response to an outbreak of a foreign animal disease (FAD), including infectious, non-infectious and zoonotic disease.

If a foreign animal disease is suspected, there are procedures that must be followed to confirm the presence of the disease and to contain and/or eradicate the disease (see **Appendix 2** for Animal Disease Response Flowcharts).

b. Plant Disease and Pest Infestation surveillance and response: This includes the implementation of an integrated federal, state, local and tribal response to a plant disease or pest infestation.

If a plant disease or pest is suspected, there are procedures that are followed to confirm the presence of the disease or pest, and to contain and/or eradicate the disease or pest.

c. Provision of nutrition assistance: This includes determining nutrition assistance needs, obtaining appropriate food supplies, arranging for delivery of the supplies, and authorizing disaster food stamps.

d. Protection of Natural, Cultural and Historic resources: This includes appropriate response actions to conserve, rehabilitate, recover, and restore NCH resources.

The Wisconsin Department of Natural Resources and the Wisconsin Historical Society are responsible for natural and cultural resource protection.

## B. Organization

During an emergency or disaster situation, the primary and support agencies of ESF 11 will assign personnel to the County EOC. Brown

County Emergency Management, as the responsible agency for implementing ESF 11, will designate an ESF-11 Coordinator to perform needed duties in the EOC. .

ESF 11 emergency operations will coordinate as appropriate during an activation of the County EOC and will coordinate the resources of the appropriate federal, state, county, and municipal agencies with Operations/Incident Command.

C. Mitigation Activities

1. Identify new technology and procedures for use in completing the ESF 11 activities.
2. Identify areas where mutual aid agreements are or should be in place.
3. Identify areas where public education detailing ESF 11 functions are needed.
4. Identify specific resources and equipment, including those held publicly and privately, that will be required to implement the ESF 11 activities.
5. Identify requirements for ESF 11 standard operating procedures, plans and checklists for Primary and Supporting Agencies.
6. Identify communication needs.
7. Identify ESF 11 training and exercising requirements.
8. Identify, develop and incorporate, as necessary
  - a. Private sector capabilities and resources
  - b. Backup response and recovery processes

D. Preparedness Activities

1. Develop, revise and/or maintain standard operating procedures and other plans and procedures as necessary for the ESF 11 operations.
2. Develop and conduct training and exercise programs involving ESF 11 functions.
3. Develop and maintain a contact list of agencies and organizations involved with ESF 11 operations, including staff and staff support rosters.

4. Develop and maintain ESF 11 resource lists, including a contact notification list with essential information included, such as resources location address, telephone, cellular and facsimile numbers, and email addresses.
5. Ensure that copies of all necessary ESF 11-specific emergency manuals, plans and procedures, and other reference materials are located in the County Emergency Operations Center.
6. Develop and maintain a database of trained professionals and volunteers throughout the county who can be called on to help with emergencies involving food, agriculture, natural and cultural resources. These staff members and external resources may be contacted and notified by the appropriate lead for the incident.
7. Assist municipalities in the preparation and development of food and agriculture response plans, as well as plans for natural and cultural resources, as deemed necessary.
8. Plan, conduct and evaluate public education programs for prevention, preparedness, response and recovery.
9. Assist in the maintenance and expansion of programs such as the Wisconsin Veterinary Corps at the county/local level to prepare volunteers for terrorism incident support for food and agriculture incidents.
10. Support coordination and cooperation between governmental, private sector and non-governmental agencies to facilitate response efforts.

E. Response Activities

1. The County ESF 11 Coordinator will support response activities for the control and eradication of a foreign animal disease in Brown County and the State of Wisconsin through coordination with DATCP and the USDA-Animal and Plant Health Inspection Service-Veterinary Services (APHIS – VS), and the Wisconsin Department of Natural Resources (DNR) .
2. Provide technical advice to Brown County and municipal officials, EOC staff, and the Incident Commander on matters related to the containment and eradication of any foreign animal disease.
3. Provide support and technical assistance and coordination assistance to county and local emergency managers, tribal managers.

4. Maintain liaison with local, county and tribal government and volunteer service agencies.
5. Work with the Brown County Health Department to issue advisories and protective action recommendations to the public as necessary.
6. Support vaccination programs if warranted to control the spread of a disease.
7. Coordinate with ESF-15 and/or the Brown County PIO Group to provide accurate, consistent and timely information to the public.

F. Recovery Activities

1. Continue coordination/monitoring of the management of plant and animal disease and pest infestations, food safety, and NCH resources.
2. Continue to maintain liaison with local, county and tribal government to manage volunteer service response activities.
3. Assist with reuniting owners and their animals.
4. Continue to coordinate services to farmers affected by an incident through the Farm Center Helpline and Farm Center staff.

#### IV. RESPONSIBILITIES

A. County Agencies

Local officials, governmental and non-governmental agencies will be actively involved in the response and should be utilized. Each county and local government has a Local Emergency Response Plan which provides the framework for the jurisdiction's response to an emergency or disaster. County and local emergency managers/directors may utilize their resources and provide additional lines of communication with and for local producer/processors and the local Cooperative Extension Service.

1. County Chief Elected Officials

The chief elected officials will maintain direction and control of governmental activities; declare a county emergency through the normal process described in the Local Emergency Response Plan; and provide local resources as available.

The chief elected official will use the Incident Command system, participating in an appropriate NIMS command structure with other agencies and responders such as the Wisconsin Department of Agriculture, Trade and Consumer Protection (DATCP) and/or USDA.

The County Clerk/Treasurer will coordinate the documentation of all disaster related expenses such as personnel time, overtime, equipment usage, in-kind or stocked materials, etc. and will follow accepted accounting procedures. Each county or local agency will document their own disaster related expenses and make the data available as requested.

2. County Law Enforcement (Sheriff's Office)

The Sheriff's office serving the county will receive an early alert of a suspected foreign animal or plant disease or pest infestation from officials at DATCP should the health evaluation warrant it. At the time of disease confirmation, the Sheriff will become a member of the command structure for the event and may assume the command position for local law enforcement functions. The Sheriff's Department will provide the initial incident security to the personnel and the quarantine zone. The Sheriff's Department will provide communications support and will coordinate local law enforcement response with support from the Wisconsin State Patrol and the National Guard if activated. Other roles and responsibilities during a disaster are outlined in other parts of the Local Emergency Response Plan.

3. County Emergency Management

The Emergency Manager/Director will receive an early alert of a suspected disease from DATCP officials should the health evaluation warrant it. At the time of disease confirmation, the County may decide to activate their EOC. The role and responsibilities of the Emergency Manager will remain the same as in other disasters; that is to coordinate requests for additional support, communicate with and advise the chief elected officials and WEM of local conditions and activities.

4. County Highway Departments

The County Highway Departments will respond to requests as in other disasters with emphasis on traffic control in the quarantine zone. In support of the law enforcement agencies, they will identify the sustainability of roads and bridges necessary for re-routing traffic from the quarantine zone. They may also assist by providing

excavation and transportation equipment and operators to move soil, carcasses or debris as directed.

5. Fire Service/EMS

The local fire service(s) will, within their limits of training and equipment, provide assistance with decontamination, hazardous material and protection as required by the Veterinary Emergency Team. They will also provide EMS services as needed. Mutual aid requests will follow normal processes as described in the county's Local Emergency Response Plan.

6. County/Local Health Departments

The County Health Department will support the Wisconsin Department of Health and Family Services and Volunteers Organizations Active in Disasters (VOAD) in providing overall leadership, coordination, assessment and technical assistance for public health needs in the event of a disaster or emergency. Other functions are described in the Local Emergency Response Plan. They will also provide assistance and epidemiology services in dealing with zoonotic (animal spread to humans) diseases.

B. Volunteer Agencies

1. Wisconsin Veterinary Corps/Humane Society

The WVC/HS will respond to local and state animal emergencies that exceed local or state capabilities. In a disaster, they can also help with animal care and treatment, rescue, sheltering, mass casualty care, evacuation, vaccination, specimen collection, decontamination, euthanasia, necropsy, and other support activities.

2. American Red Cross

Coordinate sheltering operations with feeding operations at specified sites.

Identify and assess the requirements for food and distribution services on a two-phase basis: critical emergency needs immediately after the disaster, and longer-term sustained needs after the emergency is over.



**V. REFERENCES** (located in EOC)

**VI. ACRONYMS**

See Brown County Emergency Operation Plan Appendix

**VII. APPENDICES**

1. List of Authorities
2. Flowchart of Animal Disease Response Actions

## **APPENDIX 1: LIST OF AUTHORITIES**

### **A. Department of Agriculture, Trade and Consumer Protection**

The department has authority to embargo the movement of animals carrying communicable diseases either into the state or from one point in the state to another under Wisconsin State Statute 95.20. Wisconsin State Statute 93.07(10) gives the department broad discretion to impose animal health quarantines.

### **B. Wisconsin Department of Natural Resources**

The department derives its authority over wild animals impacted by an EAD under the General Fish and Game Regulation in Wisconsin State Statute 29. Authority over animal carcass disposal is under the General Environmental Provisions of Wisconsin State Statute 299.

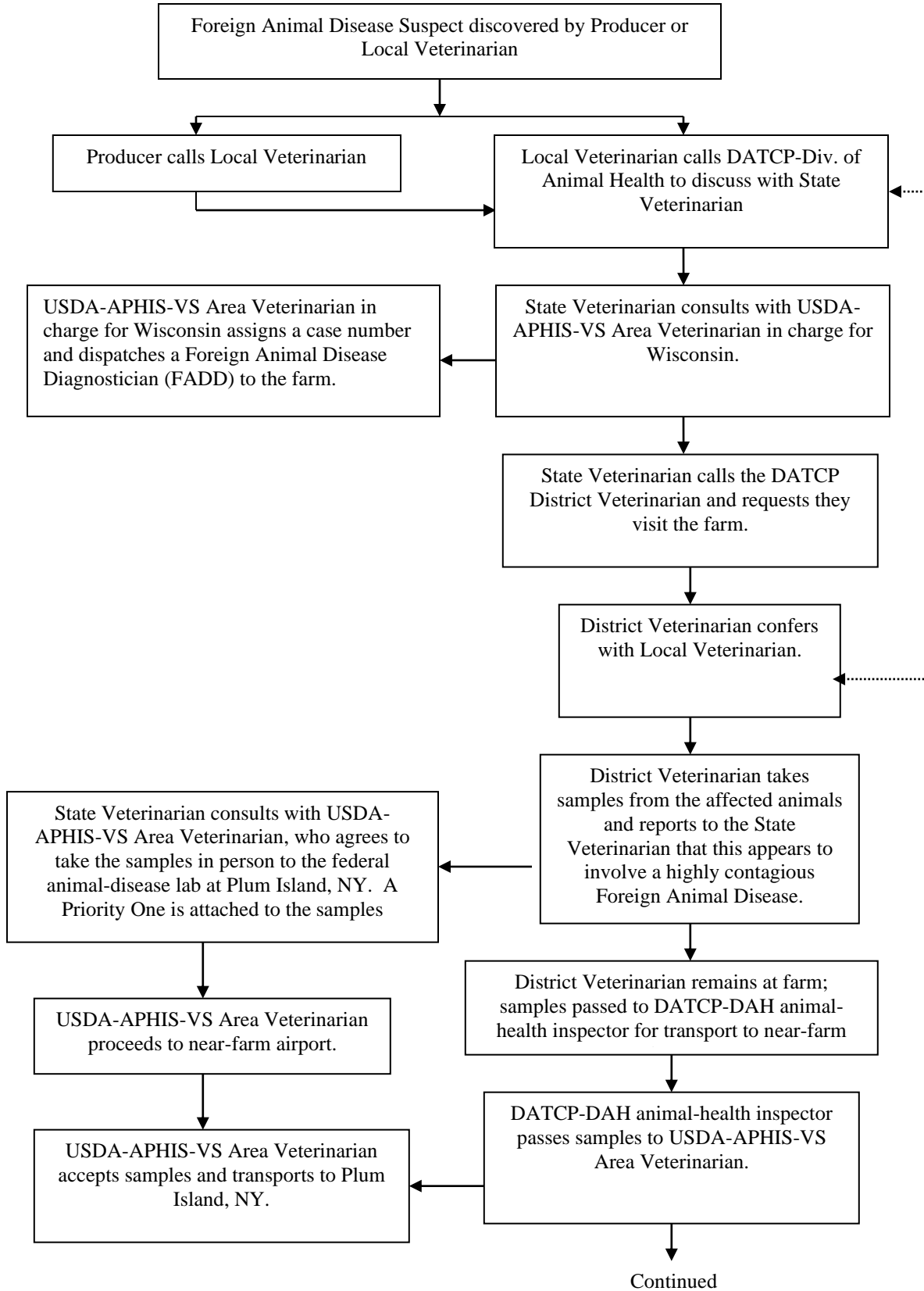
### **C. Wisconsin Emergency Management**

Wisconsin Emergency Management coordinates state response to disaster situations in support of local jurisdictions under authority granted in Wisconsin State Statute 166.03

### **D. Wisconsin Department of Health and Family Services**

General powers and duties of the department are listed in Wisconsin State Statute 250.04. The department may require isolation of patients, quarantine of contacts, concurrent and terminal disinfection or modified forms of these procedures as provided by Wisconsin State Statute 252.06. Additional authority to protect public safety in the case of communicable disease can be found in Wisconsin State Statutes 252.18, 252.19 and 252.21.

## APPENDIX 2: FLOWCHART OF ANIMAL DISEASE RESPONSE ACTIONS



## APPENDIX 2: FLOWCHART OF ANIMAL DISEASE RESPONSE ACTIONS

