

2013 Coordinated Public Transit- Human Services Transportation Plan for Brown County, Wisconsin





U.S. Department of Transportation

Federal Highway Administration



U.S. Department of Transportation

Federal Transit Administration



The preparation of this report has been financed in part through grant[s] from the Federal Highway Administration and Federal Transit Administration, U.S. Department of Transportation, under the Metropolitan Planning Program, Section 104(f) of Title 23, U.S. Code. The contents of this report do not necessarily reflect the official views or policy of the U.S. Department of Transportation.

Table of Contents

Chapter 1 – Introduction	4
Coordinated Public Transit-Human Services Transportation Plan Requirement	4
Participation Process	4
Meeting Record	5
Chapter 2 – Demographics	7
Population by Age	7
Senior Population	8
Individuals with Disabilities Population	8
Low Income Individuals Population	8
Chapter 3 – Transportation Providers in Brown County	11
Inventory of Public Transit-Human Services Transportation Services in Brown County.....	11
Green Bay Metro	11
Brown County Human Services Department	15
Aging and Disability Resource Center of Brown County	15
American Red Cross Northeast Wisconsin Chapter.....	17
Oneida Transit.....	19
Salvation Army	19
Disabled American Veterans (DAV)	20
Inventory of Private Transportation Providers in Brown County	21
Chapter 4 – Action Plan	23
Process	23
Chapter 5 – Program of Projects	31
2014-2018 Program of Projects	31
Chapter 6 – Conclusion	33
Conclusion	33

Appendices

Appendix A – Brown County Meeting – Letter of Invitation to Participate.....43

Appendix B – Brown County Meeting – List of Invitees and Worksheet to Document
County Meeting Invitations47

Appendix C – Brown County Meeting – Agenda55

Appendix D – Brown County Meeting – Flyer59

Appendix E – Brown County Meeting – Evaluation Form and Results63

Appendix F – Notice of Public Review Period and Notice of Public Meeting.....67

Appendix G – County Transportation Services Inventory Worksheets71

Chapter 1 - Introduction

Coordinated Public Transit-Human Services Transportation Plan Requirement

The human services transportation provisions of the federal Moving Ahead for Progress in the 21st Century (MAP-21) aim to improve transportation services for seniors, individuals with disabilities, and low income individuals by ensuring that communities coordinate transportation resources provided through multiple federal programs. Coordination will enhance transportation access, minimize duplication of services, and facilitate the most appropriate cost effective transportation possible with available resources. To express these goals, the county is required to publish a locally developed *Coordinated Public Transit-Human Services Transportation Plan*.

MAP-21 requires that the county *Coordinated Public Transit-Human Services Transportation Plan* identify an approved program of projects prior to distribution of funds from Federal Section 5310 - Enhanced Mobility of Seniors and Individuals with Disabilities.

In addition, the Wisconsin Department of Transportation (WisDOT) has required or recommended the following nine items be included in the plan. They include:

1. County Meeting Invitation List
2. County Meeting Participant List
3. Copy of the newspaper *Notice of Public Comment Period and Meeting*
4. County Meeting Flyer
5. County Meeting Record
6. County Inventory of Transportation Programs and Services
7. County Coordination & Assessment Action Plan
8. County List of Approved Projects for Section 5310, 5316, and 5317
9. County Meeting Evaluation and Summary

All of these items are included in the plan.

Participation Process

MAP-21 also requires that the *Coordinated Public Transit-Human Service Transportation Plan* be developed through a local process that includes representatives from public and private transportation providers, human service agencies, interested parties, and the general public.

The WisDOT has developed a county meeting process to comply with this requirement. In the case of Brown County, the Metropolitan Planning Organization (MPO) planners were chosen to coordinate the project, conduct meetings, and write the final report. The MPO planners were chosen because they are currently responsible for reviewing federal and state program applications, need to be aware and knowledgeable of transit programs and funding streams in each county, and are an independent and objective entity.

Brown County Planning Commission/MPO staff developed a list of potential representatives using WisDOT-endorsed guidelines and invited them to participate in the county meeting (see Appendix A for a copy of the letter requesting participation, Appendix B for a list of the Brown County meeting invitees and documentation, Appendix C for a copy of the Brown County meeting agenda, and Appendix D for a copy of the Brown County meeting flyer). In addition, Brown County Planning Commission/MPO staff established a 30-day public comment period and issued a meeting invitation to the general public (see Appendix F for a copy of the *Notice of Public Review Period and Notice of Public Meeting*).

Meeting Record

The Brown County meeting was held on August 12, 2013. The county meeting participants are listed below:

Brown County Meeting Participants List

	Name	Representing
1.	Lisa J. Conard	Brown County Planning Commission/MPO/Green Bay MPO
2.	Cole Runge	Brown County Planning Commission/MPO/Green Bay MPO/ Brown County Transportation Coordinating Committee
3.	Kurt Wipperfurth	Able Taxi and Tours LLC Local Private Transportation Company
4.	Christel Giesen	Aging and Disability Resource Center
5.	Holly Lorenz	Aging and Disability Resource Center
6.	Mary Schlautman	Aging and Disability Resource Center
7.	Lisa Van Donsel	Aging and Disability Resource Center Board of Directors
8.	Devon Christianson	Aging and Disability Resource Center / Brown County Transportation Coordinating Committee
9.	Tina Whetung	American Red Cross Northeast Wisconsin Chapter/ Brown County Transportation Coordinating Committee
10.	Debbie Johnson	ASPIRO/ Brown County Transportation Coordinating Committee
11.	Nicole Lowe	Bornemann Nursing Home
12.	Chris Hasselbacher	Brown County Human Services/ Brown County Transportation Coordinating Committee
13.	Genny Willemon	Brown County Human Services - Community Treatment Center
14.	Julie Tetzlaff	CP Center/ Brown County Transportation Coordinating Committee
15.	Pam Bush	Door-Tran
16.	Mai Yia Yang	Forward Service Foundation/Mobility Manager
17.	Essie Fels	Green Bay Metro
18.	Patty Kiewiz	Green Bay Metro/ Brown County Transportation Coordinating Committee
19.	Veronica Ordaz	Howe Community Resource Center
20.	Sue Horner	ManorCare Health Services West
21.	Jim Genrich	McCormick Home

	Name	Representing
22.	Diana Brown	NEW Curative/ Brown County Transportation Coordinating Committee
23.	Cassie Stremer	Odd Fellow Home
24.	Jamie Strohschein	Odd Fellow Home
25.	Janet Klika	Odd Fellow Home
26.	Sandy Popp	Options for Independent Living/ Brown County Transportation Coordinating Committee
27.	Jenna Wilke	Parkview Manor Health and Rehabilitation Center
28.	Melissa Zuleuer	Parkview Manor Health and Rehabilitation Center
29.	Barb Zambon	Patient Pines Assisted Living
30.	Suzanne Kowakzyk	St. Vincent Hospital
31.	Amber Burgess	The Salvation Army
32.	Tracy Flucke	Village of Allouez
33.	Andrew Vissers	Village of Bellevue

Chapter 2 – Demographics

Population by Age

The following table summarizes the population of Brown County by age cohort.

**2010 U.S. Census
Brown County, Wisconsin**

Age	Female	Male	Total	Percent of Total
Under 5 years	8,405	8,762	17,167	6.9%
5 to 9 years	8,422	8,725	17,147	6.9%
10 to 14 years	8,369	8,754	17,123	6.9%
15 to 19 years	8,589	8,867	17,456	7.0%
20 to 24 years	8,802	8,619	17,421	7.0%
25 to 29 years	8,788	8,842	17,630	7.1%
30 to 34 years	7,956	8,377	16,333	6.6%
35 to 39 years	7,712	7,977	15,689	6.3%
40 to 44 years	8,477	8,712	17,189	6.9%
45 to 49 years	9,730	9,700	19,430	7.8%
50 to 54 years	9,168	9,225	18,393	7.4%
55 to 59 years	8,063	7,806	15,869	6.4%
60 to 64 years	6,322	6,049	12,371	5.0%
65 to 69 years	4,511	3,957	8,468	3.4%
70 to 74 years	3,466	3,101	6,567	2.6%
75 to 79 years	3,031	2,250	5,281	2.1%
80 to 84 years	2,520	1,689	4,209	1.7%
85 years and over	3,018	1,246	4,264	1.7%
Total:	125,349	122,658	248,007	100.0%

Source: U.S. Census Bureau.

Senior Population

In Brown County, 28,789 people (11.6% of the population as of 2010) are age 65 or older.

Individuals with Disabilities Population

The definition used to define individuals with disabilities is:

Individuals who, because of any temporary or permanent physical or mental condition or institutional residence, are unable, without special facilities or special planning or design, to use available transportation facilities and services as effectively as persons who are not so affected.

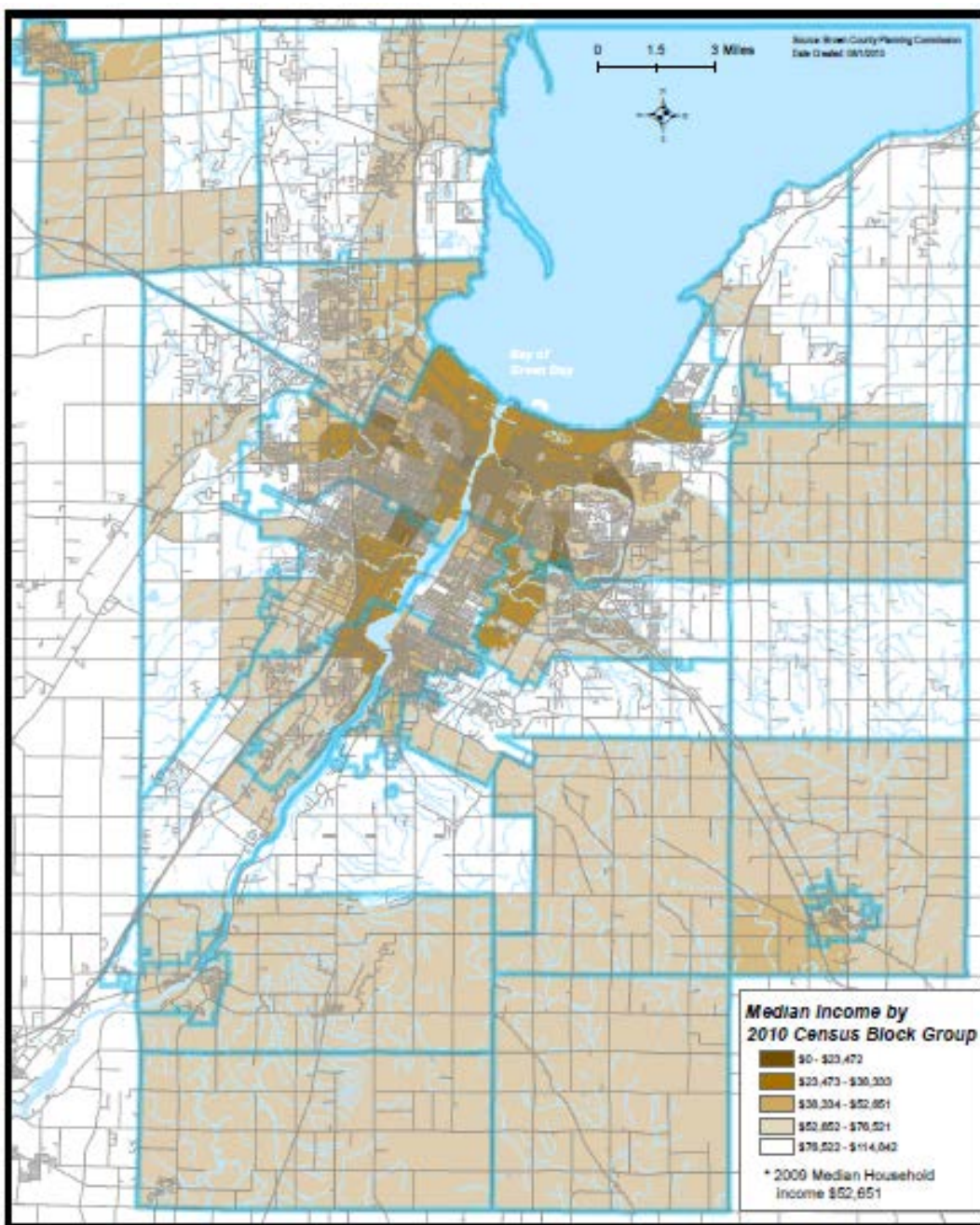
In Brown County, 26,701 people (10.8% of the population as of 2010) have a disability.

Low Income Individuals Population

Seniors and individuals with disabilities often have low incomes. This can create barriers to transportation services. In Brown County, 25,545 people (10.3% of the population as of 2010) live below the poverty level.

The following figure shows the median household income ranges in Brown County according to the 2010 U.S. Census.

Median Household Income in Brown County by 2010 U.S. Census Block Group



Chapter 3 – Transportation Providers in Brown County

Inventory of Public Transit-Human Services Transportation Services in Brown County

County Transportation Services Inventory Worksheets can be seen in Appendix G.

1. Green Bay Metro

Green Bay Metro is located at 901 University Avenue in Green Bay. Passengers benefit from an indoor waiting area, information counter, vending machines, and public restrooms. Outside, a large canopy covers many bus stalls to protect passengers from falling rain and snow. In addition, each bus route has a designated stall.

Green Bay Metro – 901 University Avenue, Green Bay, WI

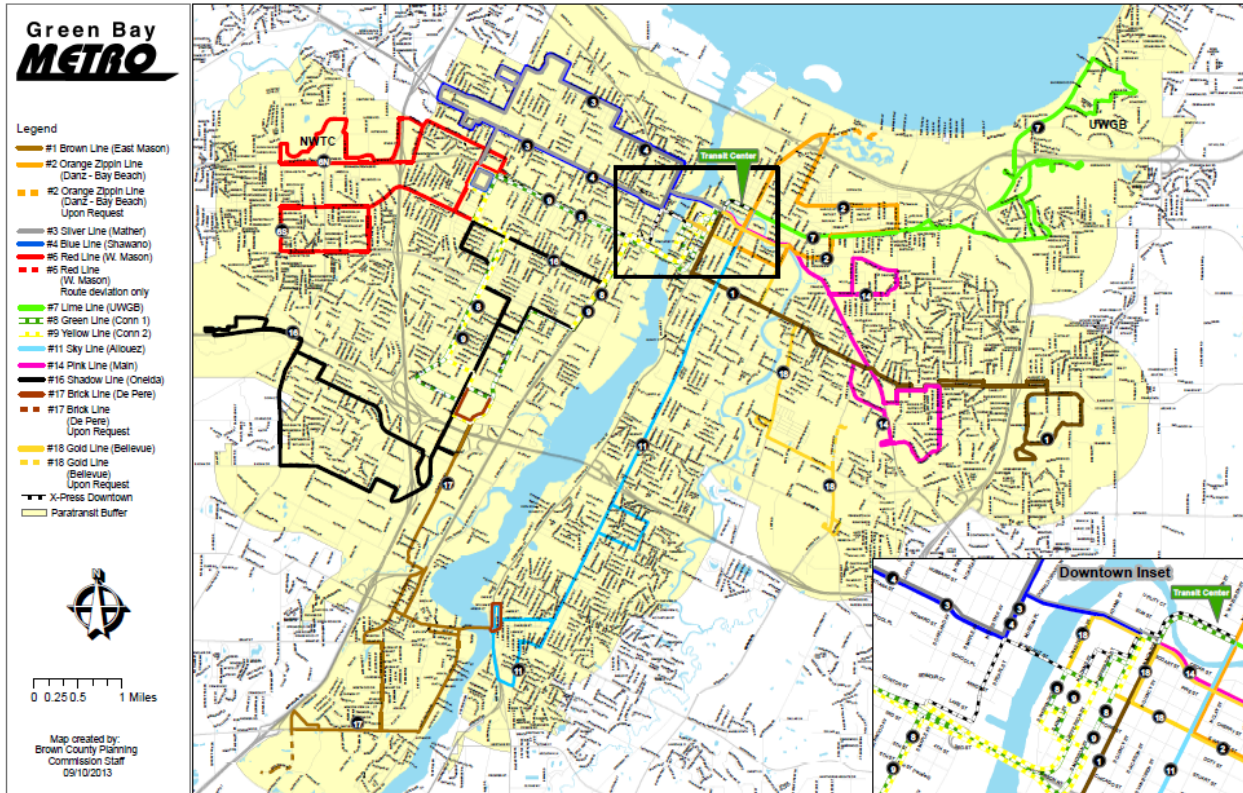


a. Fixed Route Service

Green Bay Metro operates 14 full service and a number of limited service bus routes throughout the Green Bay area. Fixed route transit services are provided to the cities of Green Bay and De Pere and the villages of Allouez, Ashwaubenon, and Bellevue. Service is provided Monday through Friday from 5:15 a.m. to 9:45 p.m. and on Saturday from 7:15 a.m. to 6:45 p.m. Service is not provided on Sunday.



Green Bay Metro Full Service Routes with Paratransit Boundary Shaded



b. Fixed Route Service Fares

The current fare structure is as follows:

Green Bay Metro Fixed Route Fares as of September 2013

Fare Category	Cash	30-Day Pass
Adult	\$1.50	\$35.00
Student (K-12)	\$1.00	\$20.00
Reduced	\$0.75	\$25.00

c. Paratransit Program

Paratransit is an alternative to the fixed route Metro system. It is intended for people who cannot be served by Metro's fixed route buses due to disabilities. Service is more flexible in terms of scheduling and routing, is offered on a demand/response basis, and is usually provided by low capacity vehicles, such as vans. Paratransit is meant to be complementary to the fixed route system in terms of service area, service days and

hours, and cost.

The Americans with Disabilities Act (ADA) became law on July 26, 1990. The law is intended to provide equal access rights for people with disabilities in the areas of employment, public services, public transportation, private accommodations, and telecommunications. The law requires recipients of Federal Transportation Administration (FTA) funds (like Green Bay Metro) to prepare a program for providing transportation services to people with disabilities by using both lift-equipped fixed route service and complementary paratransit service. Individuals are eligible to use ADA public transportation service or paratransit if they satisfy disability standards established by the ADA.

Paratransit Service Provided

Paratransit services are provided to individuals with qualifying disabilities to the cities of Green Bay and De Pere and the villages of Allouez, Ashwaubenon, and Bellevue within $\frac{3}{4}$ mile of the full service fixed routes. Service is provided Monday through Friday from 5:15 a.m. to 9:45 p.m. and on Saturday from 7:15 a.m. to 6:45 p.m. Service is not provided on Sunday.

Paratransit Provider

Green Bay Metro currently contracts with a private transportation company, MV, to provide this service.

Vehicles used by MV



Paratransit Fare Structure

The current contract allows MV to receive \$22.67 per non ambulatory passenger (a person who requires a mobility device to board) and \$18.37 per ambulatory passenger (a person who does not require a mobility device to board) for each one-way trip in 2013. Green Bay Metro also provides the fuel to operate MV's revenue vehicles at an average estimated rate of \$3.74 per trip. The average rate is tied to service efficiencies (dispatch & trip scheduling) and fuel prices.

The origin to destination fare is based on twice the adult fixed route cash fare.

Green Bay Metro – Passenger Portion of Fare

Fare Category	Cash or Ticket
Origin to Destination	\$3.00
Agency Trip*	\$7.00

*Agency trip rates were approved by the Transit Commission and introduced on February 2, 2012. An agency is defined as an organization that serves persons who qualify for human service or transportation related programs or services due to disabilities, income, or advanced age. Many paratransit clients fall under the umbrella of a local agency. For example, a paratransit client that receives financial support from a program administered by the Brown County Human Service Department and travels to the CP Center for therapy three times per week would be charged the agency rate for the home to CP and CP to home trips.

The following table summarizes the ridership and costs associated with the paratransit program.

Paratransit Program 1998-2012

Year	Trips	Trip Costs*	Cost Increase/ Decrease	Percent Cost Increase/Decrease
1998**	69,621	\$602,918		
1999	81,571	\$908,077	+\$305,159	+51%
2000	94,057	\$1,081,756	+\$173,679	+19%
2001	97,000	\$1,161,209	+\$79,453	+7%
2002***	98,320	\$1,484,632	+\$323,423	+28%
2003	96,509	\$1,515,223	+\$30,591	+2%
2004	100,601	\$1,664,826	+\$149,603	+10%
2005	96,039	\$1,639,625	-\$25,201	-2%
2006****	72,979	\$1,305,135	-\$334,490	-20%
2007	69,499	\$1,243,337	-\$61,798	-5%
2008	69,140	\$1,337,548	+\$94,211	+8%
2009	68,868	\$1,313,787	-\$23,761	-2%
2010	67,384	\$1,337,797	+\$24,010	+2%
2011*****	63,337	\$1,330,561	-\$7,236	-1%
2012	59,399	\$1,393,869	+\$63,308	+5%

* Trip cost includes fuel escalator payments from 2006-2011.

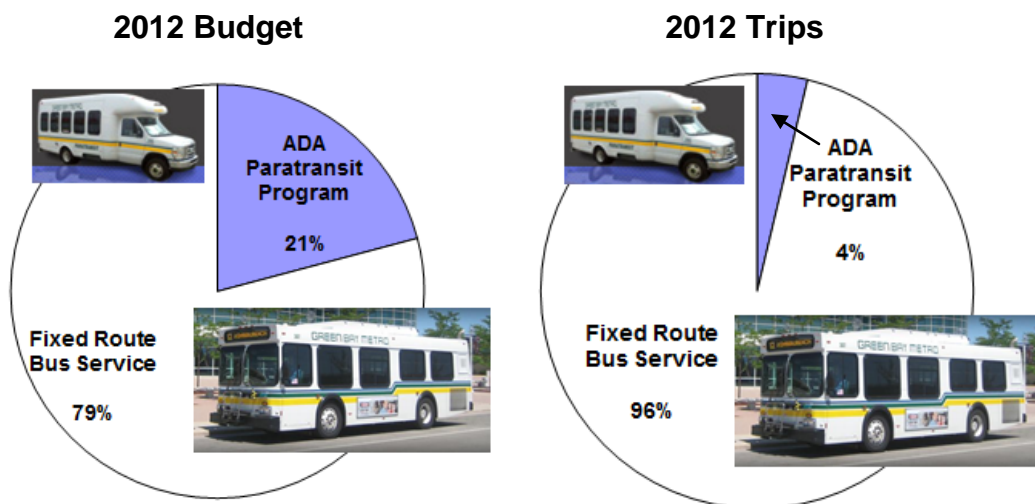
** Under contract with Lamers, Inc.

*** Start of four and one-half year contract in January with four-month extension with Medi-Vans.

**** Start of four and one-half year contract in November with Medi-Vans. Service area reduction implemented.

***** Start of four year and eight month contract in May with MV Transportation.

Approximately 21.0 percent of Metro's 2012 budget was devoted to paratransit service, but only about 4.0 percent of the trips were taken via paratransit.



2. Brown County Human Services Department

The Brown County Human Services Department administers the Medicaid and BadgerCare Plus programs. The cost of transportation to medical and dental services may be covered if these services are covered by Medicaid and BadgerCare Plus. This transportation is arranged through Medical Transportation Management (MTM, Inc.), Wisconsin's non-emergency medical transportation manager.

3. Aging and Disability Resource Center (ADRC) of Brown County

The Aging and Disability Resource Center provides advocacy and support services to Brown County's seniors and individuals with disabilities, and transportation is one of these services. The ADRC receives a Specialized Transportation Assistance Program for Counties (State Section 85.21) award each year. Section 85.21 provides counties with financial assistance to provide transportation to seniors and individuals with disabilities. In 2013, the ADRC used Section 85.21 funds to offset the cost of transportation services of the Red Cross, NEW Curative Rehabilitation, rural driver escort program, Brown County Human Services programs, and Oneida Transit. In addition to the allocation of 85.21 funds, the county contributed \$101,893 toward these programs in 2013. A table that summarizes how Brown County's 85.21 funds were allocated in 2013 is shown on the following page.

2013 Allocation of Section 85.21 Funds

Allocation	Service	Funding
American Red Cross	Operations (see details below).	\$266,595
NEW Curative Rehabilitation	Operations (see details on page 16).	\$147,702
Rural Driver Escort	Provides transportation to rural residents of Brown County.	\$35,128
Brown County Human Services Van/Driver Program	Offset the cost of paid driver and vehicle operations. Provide specialized rides to clients.	\$33,421
Brown County Human Services Fare Assistance	Offset the cost of fares for private and public transportation services for clients.	\$16,000
Salvation Army	Hmong program and transportation for seniors to and from the grocery store.	\$7,920
Oneida Tribe of Indians	Senior transportation.	\$2,880
Total:		\$509,646

4. American Red Cross Northeast Wisconsin Region Green Bay office

(The following information and photographs contained in this report have been provided by the American Red Cross Northeast Wisconsin Region Green Bay office and used with permission.)

The American Red Cross provides a specialized transportation service to elderly (over 60) and disabled individuals in Brown County, primarily serving the metropolitan Green Bay area.

The program offers a door-to-door service and provides rides for medical, nutrition, employment, education, and social trips. Transportation is provided in automobiles, accessible mini-vans, and accessible buses. Examples of Red Cross vehicles are shown below.



The American Red Cross has a fleet of 24 vehicles, and all of the accessible mini-vans and buses are funded 80% by the Federal Transit Administration (FTA) Section 5310 Elderly and Persons with Disabilities Program. Funding for the operation of this program

comes from the Brown County Aging & Disability Resource Center (through the 85.21 program), United Way of Brown County, client fares, and donations. The Red Cross program is supported with 85 volunteer drivers as well as two full-time and two-part time paid staff members.

The Red Cross provides service Monday through Friday from 8:00 a.m. to 4:30 p.m. The cost is \$6.00 per person for a round trip. Clients can pay with cash or checks, and they may also purchase 5 ride (\$15.00) and 10 ride (\$30.00) tickets from the volunteer drivers.

In 2012, Red Cross provided 70,317 rides. Listed below is a 12 year ridership history:

Red Cross Transportation Program Ridership: 2001-2012

Year	Trips	Percent Change
2001	52,407	
2002	55,824	6.5%
2003	59,426	6.5%
2004	62,812	5.7%
2005	62,087	-1.2%
2006	64,990	4.7%
2007	66,635	2.5%
2008	67,827	1.7%
2009	61,620	-10%
2010	62,803	1.9%
2011	66,531	5.5%
2012	70,317	5.4%

Pulaski – Green Bay Area

The Pulaski Senior Center, in conjunction with the American Red Cross, has been providing transportation services to citizens of Pulaski since 2001. A small bus that can accommodate eight passengers and one wheelchair is housed at the Pulaski Senior Center and is used to provide an estimated 30 clients with 60 rides per month to various medical, nutritional, and social appointments both within Pulaski and to nearby cities such as Green Bay.

Denmark area

The Aging and Disability Resource Center of Brown County and the American Red Cross have been working collaboratively to expand the service into the Denmark area. ADRC staff has been working with residents in the Denmark area to provide both an in-town and out-of-town service to those in their community who are over 60 and/or are disabled. This program is scheduled to start on October 23, 2013.

N.E.W. Curative Rehabilitation

N.E.W. Curative Rehabilitation, Inc. is a private non-profit organization serving people with disabilities, the elderly, and those with special employment needs in Northeastern Wisconsin. N.E.W. Curative offers more than 30 different programs that serve over 2,500

people per year.

N.E.W. Curative Rehabilitation contracts with the American Red Cross for the use of 5 vehicles. The vehicles are used to transport clients to and from adult day care programs within Brown County. The American Red Cross houses the vehicles and provides maintenance and fuel. N.E.W. Curative provides the drivers and insurance.

Ft. Howard Apartments

Ft. Howard Apartments contracts with the American Red Cross for the use of 1 vehicle. The vehicle is used to transport seniors and people with disabilities living at their housing complex to and from medical, nutritional, and other appointments.

Green Bay Public School District

The Green Bay Public School District contracts with the Red Cross to provide transportation for students with disabilities for educational group outings. The school district provides the driver and the insurance on the vehicle while they are using it.

General Public

The American Red Cross makes vehicles available to the general public to rent for the purpose of transporting seniors and individuals with disabilities. Certain requirements must be met prior to any vehicle being rented.

Long-Term Transportation Goal of the American Red Cross Northeast Wisconsin Chapter

The long-range goal of the American Red Cross is to provide transportation service to rural residents of Brown County. To fulfill this goal, additional grant funds, United Way support, local donations, and dedicated volunteer drivers will be necessary.

Oneida Transit

Oneida Transit provides approximately 235 demand-response trips each day. The service area primarily consists of the 65,000 acre Oneida Reservation. However, when necessary, Oneida Transit will transport passengers to medical and other appointments outside of tribal boundaries. Oneida Transit is a recipient of a portion of Brown County's State 85.21 allocation.

Salvation Army

The Salvation Army provides a limited amount of transportation services for seniors and individuals with disabilities through the use of small buses and volunteer drivers.

The Salvation Army is a recipient of a portion of Brown County's State 85.21 allocation.

Disabled American Veterans (DAV)

The DAV is a non-profit veterans service organization. The DAV Green Bay office provides transportation to American veterans traveling to and from the Milwaukee, Madison, Appleton, Tomah, and Iron Mountain Veterans Administration (VA) clinics. The DAV operates its own vehicles and the program is supported by a volunteer transportation coordinator and drivers.

The Milo C. Huempfer Community Based Outpatient Clinic opened in Green Bay in September of 2013. It is anticipated that many veterans previously transported to VA clinics throughout the state will be able to receive services at the new clinic, reducing the demand for out-of-county trips.

Green Bay Metro offers fixed route bus service to the new clinic twice per hour during regular clinic hours. Paratransit services are also available to qualifying individuals.

Inventory of Private Transportation Providers in Brown County

A number of private transportation operators provide services in Brown County and are listed below.

Private Transportation Providers in Brown County (2013)

Agency	Agency	Agency
1st Choice Shuttle Service 2995 Holmgren Way Green Bay, WI 54304	Bay Bus Shuttle, LLC 846 Lime Kiln Rd Green Bay, WI 54302	Limo Shuttle and Taxi 2600 S Ashland Ave Green Bay WI 54304
A-1 Medi Mobile 2819 University Avenue Green Bay, WI 54311	DW Shuttle 106 Oakton Ln Green Bay, WI 54311	MV Transportation 1011 Parkview Green Bay, WI 54304
Able Taxi and Tours, LLC 1950 Cofrin Dr #9165 Green Bay, WI 54302	Elite Shuttle 2010 Memorial Dr Green Bay, WI 54303	Packerland Shuttle/Taxi 432 N Broadway De Pere, WI 54115
Ace Yellow/Checker Yellow/ Green Bay Yellow Cab/ Yellow Cab of Brown County 1212 S. Maple Avenue Green Bay, WI 54304	First Student 1840 Lime Kiln Road Green Bay, WI 54311	Renegade Taxi and Shuttle 306 Greenwood Av Green Bay WI 54303
American Shuttle 800 Cedar St Green Bay, WI 54301	Kobussen Buses W914 County Road CE Kaukauna, WI 54130	Tundra Valley Taxi LLC 1124 State Street Green Bay WI 54304
Astro Shuttle 2642 Packerland Dr Green Bay, WI 54313	Lamers Bus Lines 2937 Monroe Road De Pere, WI 54115	

Chapter 4 – Action Plan

Process

The 2013 Action Plan was developed by county meeting participants with assistance from Brown County Planning Commission/MPO staff. County meeting participants were asked to identify:

- needs and gaps in transportation services
- possible solutions to the needs and gaps
- persons or entities responsible for addressing needs and gaps
- a timeline for implementation
- roadblocks to implementation

Action Plan

Issue/Action	Responsible Party	Timeline	Roadblock to Implementation
Continue holding quarterly meetings of the Brown County Transportation Coordinating Committee (TCC).	Brown County Planning Commission/MPO and the Aging & Disability Resource Center of Brown County	<p><u>The formation of the TCC:</u> The TCC was established by the Brown County Board of Supervisors in 2008.</p> <p><u>The function of the TCC:</u> TCC members collaborate/share information on available services, assist in resolving client/provider issues, and provide advocacy on behalf of seniors and individuals with disabilities who require specialized transportation services. The TCC also reviews and approves the ADRC's annual 85.21 applications and reviews and recommends approval of projects through the Section 5310 Enhanced Mobility of Seniors and Individuals with Disabilities Program.</p>	None.
Delay or prevent the need for specialized transportation services through mobility training.	Human service agencies and Green Bay Metro	<p><u>Available.</u> Green Bay Metro, in cooperation with the Brown County Planning Commission/MPO and the Job Center of Wisconsin produced a "<i>How to Ride the Bus</i>" video. The video is available in closed captioning, English, and Spanish. Although the video was produced in 2007, many of the components are still applicable.</p> <p><u>Ongoing.</u> Green Bay Metro offers one-on-one bus boarding and alighting training for individuals using mobility devices.</p>	Lack of resources.

Issue/Action	Responsible Party	Timeline	Roadblock to Implementation
<p>To enhance public transportation service for existing bus riders & make Metro a viable option for non-riders, Metro will have to raise & sustain additional money in the future. Current federal, state, & local funding sources will not likely increase over the next several years.</p> <p>Continue to study the possibility of creating a Regional Transportation Authority (RTA) in the Green Bay area, Brown County, or region.</p>	<p>Green Bay Transit Commission, Green Bay Metro staff, Brown County Planning Commission/MPO, and the State of Wisconsin</p>	<p><u>Ongoing</u>. BCPC/MPO and Metro staffs continue to monitor/study the impact of recent changes in federal and state funding levels. Staffs continue to monitor state RTA enabling legislation proposals.</p>	<p>Federal Transportation law limits the amount of funding large urban areas can receive for public bus and paratransit services. The Green Bay Urbanized Area reached 200,000+ population in the 2010 Census, prompting a decrease in overall federal transit aids used to provide service in Green Bay, De Pere, Allouez, Ashwaubenon, and Bellevue.</p> <p>State of Wisconsin 2012/2013 budget reduced transit aid by 10%. State of Wisconsin 2014/2015 budget maintains 2014 at reduced level. 2015 budget returns 4%.</p> <p>State of Wisconsin enabling legislation must be approved before locals can seek public approval of a RTA.</p> <p>State Legislature recently eliminated many of the previously-approved RTAs and voted down others.</p>

Issue/Action	Responsible Party	Timeline	Roadblock to Implementation
<p>Service gaps are often created due to lack of funding, vehicle capacity, as a result of institutional barriers, or other reasons. Gaps need to be identified and resolved if possible.</p> <p><u>Gaps:</u> There have been requests for public transportation services to accommodate shift workers, for Sunday and holiday travelers, and to areas currently not serviced. There is also a need for services to be available 24 hours a day, seven days a week, for 365 days a year.</p>	<p>All. Explore public/private partnerships to fill gaps.</p>	<p><u>Not identified.</u> Public transportation services are not projected to increase in near future.</p>	<p>No additional funding available to provide an increase in service.</p> <p>A limited number of private providers offer this service, but it is often much more expensive than public transportation options.</p>
<p>Explore additional funding programs/opportunities, including the Federal Section 5310 Enhanced Mobility of Seniors and Individuals with Disabilities Program (which was revised under MAP-21) and/or other funding programs or opportunities.</p>	<p>Brown County Planning Commission/MPO staff, Green Bay Metro, and human service agencies.</p>	<p><u>2013+.</u> The American Red Cross Northeast District has applied and will continue to apply for replacement vehicles for use in its transportation program.</p> <p><u>2013+.</u> Green Bay Metro has accepted the role of the Designated Recipient (DR) for the new MAP-21 Section 5310 program. The Green Bay Urbanized Area will now receive a direct allocation from the program and will not have to compete for statewide funds.</p> <p><u>2014+.</u> It is anticipated that Green Bay Metro will apply for funds to enhance transportation services for seniors and individuals with disabilities.</p>	<p>Other than Red Cross, local agencies have not applied for Section 5310 funds.</p>

--	--	--	--

Issue/Action	Responsible Party	Timeline	Roadblock to Implementation
<p>Non-Emergency Medical Transportation (NEMT) provided by the State of Wisconsin Department of Health Services (DHS) & MTM Transportation to qualifying Medicaid and BadgerCare Plus Members is of poor quality and often leaves eligible clients without transportation. Other service quality issues have been documented. Service improvements needed.</p>	<p>Wisconsin DHS and private for profit transportation firm, MTM.</p>	<p>MTM began providing service on August 1st, 2013, after the previous provider, LogistiCare, issued a letter of intent to cease service.</p> <p>DHS has ensured the transportation community that improvements are being made.</p> <p>MTM's service is being monitored by representatives of the Brown County TCC and other committees and organizations.</p>	<p>Wisconsin Legislature approved current brokerage system structure in an effort to save money.</p>
<p>NEMT is difficult and costly to obtain for nursing home clients traveling to and from medical appointments and for hospital discharge. Federal reimbursement rates for qualifying individuals are approximately \$10.00 per day which is low compared to the actual cost of providing transportation at approximately \$25.00 to \$50.00 per trip. In many cases, the nursing home pays for the balance.</p>	<p>Unknown.</p>	<p><u>2013+</u>. The Brown County TCC has been studying the issue. A solution has not been identified, but the TCC will continue to address this issue in cooperation with representatives of area nursing homes.</p>	<p>Federal, State, and local funding constraints.</p> <p>Medicaid reimbursement rates are typically well below actual expenses.</p>

Issue/Action	Responsible Party	Timeline	Roadblock to Implementation
Immediate specialized transportation services are needed (for unforeseen circumstances).	Public and private transportation providers.	<u>None.</u> The Green Bay Metro paratransit program policy does not allow for same day trip requests. The American Red Cross Northeast Region will attempt to accommodate a same day request but the client can rarely be accommodated due to capacity issues. Private pay trips are available on short notice under certain circumstances.	Program policy and/or program capacity issues. A limited number of private providers offer this service although it can be cost prohibitive for some people.
The Green Bay area and Brown County could benefit from an expanded Mobility Manager function.	Currently the Job Center of Wisconsin (office located in Green Bay) employs a Mobility Manager. The focus is placed largely on employment related transportation.	<u>None.</u> However, it is possible for the existing Mobility Manager to expand current role to include other services.	Lack of funding to increase role/services. Also, WisDOT ended the program that currently funds the Mobility Manager position when MAP-21 went into effect in October of 2012, so other funding sources must be obtained to maintain the current position.
Physical barriers, such as lack of sidewalks and curb cuts, restrict access to transportation services.	Brown County municipalities, Brown County Department of Public Works, State of Wisconsin, and private developers	<u>Ongoing.</u> The need for improved land use decisions and transportation design policies are addressed in many local comprehensive plans, the Transit Development Plan, the Green Bay MPO's Long-Range Transportation Plan, and other planning documents.	Local, county, and state policies.

Issue/Action	Responsible Party	Timeline	Roadblock to Implementation
<p>New capabilities and opportunities are being created in both the transportation and human service communities through use of technology.</p> <p>Explore the increased use of technology.</p>	<p>Green Bay Metro, human service agencies, and Brown County Planning Commission/MPO</p>	<p><u>Ongoing.</u> Recent advancements and investments in technology have included Green Bay Metro's "Trip Planner" and "Where is My Bus?" applications. A high-tech fare collection system with pre-paid swipe card ability and an automatic vehicle locator (AVL) system was installed on all of Metro buses.</p> <p>Additional technology is included in Metro's Capital Improvement Program, but it is not currently funded.</p>	<p>Lack of funding.</p>
<p>Study the future of the Green Bay Metro Paratransit Program to possibly include a partial in-house operation. The current service is provided entirely by a private operator under contract with Green Bay Metro.</p>	<p>Green Bay Transit Commission with support from Green Bay Metro and Brown County Planning Commission/MPO staffs</p>	<p><u>Within five year period.</u> The BCPC and Green Bay MPO have included this concept in plans and programs for many years. This concept has been endorsed by the Green Bay Transit Commission.</p>	<p>Lack of funding to hire additional staff, purchase technology, and acquire accessible vans and/or small buses.</p>
<p>Educate local, state, and federal elected officials (policy makers) and the general public of the need for specialized transportation services. The need for specialized transportation services will increase as Brown County's population ages. Also develop an advocacy strategy.</p>	<p>Brown County TCC, Brown County Planning Commission/Green Bay MPO, Green Bay Metro, and other committees and organizations.</p>	<p><u>Ongoing.</u> Brown County TCC membership includes elected officials and members of various advocacy groups.</p> <p><u>Ongoing.</u> The BCPC staff serves on the NE Wisconsin Regional Access to Transportation Committee (NEWRATC). Funding and advocacy are key components of the committee's work.</p> <p><u>Ongoing.</u> BC Homeless & Housing Coalition, Bay Area Community Council, Job Center of Wisconsin/Mobility Manager, United Way, JOSHUA, ESTHER, and many others have brought the issue forward.</p>	<p>To be determined.</p>

Issue/Action	Responsible Party	Timeline	Roadblock to Implementation
Engage seniors, individuals with disabilities, low-income individuals, and agency staff who represent them in the development of transportation plans and policies.	Brown County Transportation Coordinating Committee, Brown County Planning Commission/MPO, and Green Bay Metro.	<u>Ongoing</u> . The Brown County TCC's membership includes advocates for seniors, individuals with disabilities, and low income individuals.	To be determined.

Chapter 5 - Program of Projects

2014-2018 Program of Projects

MAP-21 requires the county *Coordinated Public Transit-Human Services Transportation Plan* to identify an approved program of projects prior to the distribution of funds from the Federal Section 5310 Enhanced Mobility of Seniors and Individuals with Disabilities Program.

The following table summarizes the approved 2014-2018 program of projects for Brown County. The program of projects was unanimously approved by the participants in the August 12, 2013, *Coordinated Public Transit-Human Services Transportation Plan* meeting.

FY 2014-2018 Program of Projects for Brown County

Program	FY 2014 Projects	FY 2015 Projects	FY 2016 Projects	FY 2017 Projects	FY 2018 Projects
Section 5310 (Enhanced Mobility of Seniors and Individuals with Disabilities Program)	<p><u>American Red Cross Northeast Wisconsin Chapter</u> – one bus with 10 ambulatory seats & 2 wheelchair spots & one minivan with 3/4 ambulatory seats & 1/2 wheelchairs spots at a total cost of approximately \$111,000*.</p> <p>*SAFETEA-LU approved</p> <p>TIP: 158-13-502 WisDOT Cycle 38</p>	<p><u>American Red Cross Northeast Wisconsin Chapter</u> – two small buses with 7 ambulatory seats & 1 wheelchair spot & one 12 ambulatory passenger bus at a total cost of approximately \$129,000.</p>	<p><u>American Red Cross Northeast Wisconsin Chapter</u> – one small bus with 7 ambulatory seats & 1 wheelchair spot, one bus with 10 ambulatory seats & 2 wheelchair positions, & one 12 ambulatory passenger bus at a total cost of approximately \$139,000.</p>	<p><u>American Red Cross Northeast Wisconsin Chapter</u> – one small bus with 7 ambulatory seats & 1 wheelchair spot, & one 12 ambulatory passenger bus at a total cost of approximately \$85,000.</p>	<p><u>American Red Cross Northeast Wisconsin Chapter</u> - one small bus with 7 ambulatory seats & 1 wheelchair spot, & one minivan with 3 or 4 ambulatory seats & 1 or 2 wheelchair spots at a total cost of approximately \$82,000.</p>
	<p><u>Green Bay Metro</u> Section 5310 Designated Recipient (Fiscal Agent) - administration fee</p> <p>\$31,000 (two year total)</p> <p>TIP: 158-14-501 (2014) & 158-14-502 (2015)</p>				
	<p><u>Grouped Projects</u> - MAP-21 funds allocated directly to the Green Bay Urbanized Area for <u>two</u>-year period. Projects to be determined through competitive application process.</p> <p>\$279,000 (two year total)</p> <p>TIP: 158-14-503 (2014) & 158-14-504 (2015)</p>				

Chapter 6 – Conclusion

Conclusion

The working group met on August 12, 2013, identified issues of concern, and developed an action plan. The working group also approved the program of projects contained in this report.

Appendices

**Appendix A
Brown County Meeting –
Letter of Invitation to Participate**

PLANNING COMMISSION

Brown County



305 E. WALNUT STREET, ROOM 320
P.O. BOX 23600
GREEN BAY, WISCONSIN 54305-3600
PHONE (920) 448-6480 FAX (920) 448-4487
WEB SITE www.co.brown.wi.us/planning

CHUCK LAMINE, AICP
PLANNING DIRECTOR

July 22, 2008

Dear Invitee:

In 2005 the president signed the Safe Accountable Flexible Efficient Transportation Equity Act: - A Legacy for Users (SAFETEA-LU), reauthorizing the surface transportation act. As part of this reauthorization, grantees under Section 5310-Elderly and Disabled Transportation Program, Section 5316-Job Access and Reverse Commute (JARC), and Section 5317-New Freedom must meet certain requirements in order to receive funding.

One of the requirements is that projects from the programs listed above must be part of a locally developed coordinated human services transportation plan. This plan is required to be developed through a process that includes representatives of public and private transportation providers and the general public.

The Wisconsin Department of Transportation developed a county meeting process to comply with the requirements. In the case of Brown County, the Metropolitan Planning Organization (MPO) planners were chosen to coordinate and conduct meetings because they are currently responsible for reviewing federal and state program applications, need to be aware and knowledgeable of transit programs and funding streams in each county, and are an independent and objective entity. The meeting is scheduled for:

**9:45 a.m. on Tuesday, August 12, 2008
Green Bay Metro Transportation Center
Commission Room
901 University Avenue
Green Bay, Wisconsin**

You have been selected because SAFETEA-LU requires the following entities to be invited:

- Local consumers of specialized transportation services (elderly and persons with disabilities)
- Local transportation providers
- Local nursing home representatives
- Local assisted living care facilities representatives
- Local major employers
- County Board Supervisors
- General public

In addition to identifying the program of projects, the meeting will include completing an assessment of human services transportation issues and developing an action plan.

Please respond to this meeting invitation by calling Lisa J. Conard at (920) 448-6489 or by email at conard_lj@co.brown.wi.us whether you plan to attend or not. I look forward to seeing you on August 12th.

Sincerely,

A handwritten signature in cursive script that reads "Lisa J. Conard".

Lisa J. Conard
Planner

cc: Brown County Planning Commission Board of Directors

Appendix B
Brown County Meeting - List of Invitees and
Worksheet to Document County Meeting Invitations

	Name/Title	Entity	Representing
1	Tami Frea	New Community Shelter	Adult Shelter and Community Meal Program
2	Lynn Green Trustee	Village of Allouez	Allouez
3	City Clerk	City of De Pere	City of De Pere
4	City Clerk	City of Green Bay	City of Green Bay
5	Village Clerk	Village of Allouez	Village of Allouez
6	Village Clerk	Village of Ashwaubenon	Village of Ashwaubenon
7	Village Clerk	Village of Bellevue	Village of Bellevue
8	Village Clerk	Village of Denmark	Village of Denmark
9	Village Clerk	Village of Hobart	Village of Hobart
10	Village Clerk	Village of Howard	Village of Howard
11	Village Clerk	Village of Pulaski	Village of Pulaski
12	Village Clerk	Village of Suamico	Village of Suamico
13	Village Clerk	Village of Wrightstown	Village of Wrightstown
14	Town Clerk	Town of Eaton	Town of Eaton
15	Town Clerk	Town of Glenmore	Town of Glenmore
16	Town Clerk	Town of Green Bay	Town of Green Bay
17	Town Clerk	Town of Holland	Town of Holland
18	Town Clerk	Town of Humboldt	Town of Humboldt
19	Town Clerk	Town of Lawrence	Town of Lawrence
20	Town Clerk	Town of Ledgeview	Town of Ledgeview
21	Town Clerk	Town of Morrison	Town of Morrison

	Name/Title	Entity	Representing
22	Town Clerk	Town of New Denmark	Town of New Denmark
23	Town Clerk	Town of Pittsfield	Town of Pittsfield
24	Town Clerk	Town of Rockland	Town of Rockland
25	Town Clerk	Town of Scott	Town of Scott
26	Town Clerk	Town of Wrightstown	Town of Wrightstown
27	Brown County Clerk		Brown County
28	Jeff Agee-Aguayo	Bay-Lake Regional Planning Commission	Bay-Lake Regional Planning Commission
29	Cole Runge	Brown County Planning Commission/MPO	BCPC (MPO Staff)
30	Lisa Conard	Brown County Planning Commission/MPO	BCPC (MPO Staff)
31	Michael Malcheski		BCPC Board of Directors
32	Adam Gauthier		BCPC Board of Directors
33	Dotty Juengst		BCPC Board of Directors
34	Ron DeGrand		BCPC Board of Directors
35	Paul Blindauer	GEI Consultants	BCPC Board of Directors
36	John Klasen		BCPC Board of Directors
37	Scott Puyleart		BCPC Board of Directors
38	James Botz		BCPC Board of Directors
39	Ken Pabich	City of De Pere	BCPC Board of Directors
40	Steve Gander		BCPC Board of Directors
41	Dave Wiese	Village of Howard	BCPC Board of Directors
42	Tim VandeWettering		BCPC Board of Directors

	Name/Title	Entity	Representing
43	Jason Ward		BCPC Board of Directors
44	Ray Tauscher		BCPC Board of Directors
45	Reed Woodward	Village of Pulaski	BCPC Board of Directors
46	Paul Brewer	Village of Wrightstown	BCPC Board of Directors
47	Steve VandenAvond		BCPC Board of Directors
48	Mark Tumpach		BCPC Board of Directors
49	Phillip Hilgenberg		BCPC Board of Directors
50	Steve Grenier	City of Green Bay Public Works	BCPC Board of Directors
51	Norbert Dantine Jr		BCPC Board of Directors / County Board
52	William Clancy		BCPC Board of Directors / County Board
53	Bernie Erickson		BCPC Board of Directors / County Board
54	Dan Robinson		BCPC Board of Directors / County Board
55	Patrick Buckley		County Board
56	Tim Carpenter		County Board
57	Thomas De Wane		County Board
58	Patrick Evans		County Board
59	Steven Fewell		County Board
60	Dan Haefs		County Board
61	Brad Hopp		County Board
62	Erik Hoyer		County Board
63	Dave Kaster		County Board

	Name/Title	Entity	Representing
64	Dave Landwehr		County Board
65	Pat La Violette		County Board
66	Thomas Lund		County Board
67	Patrick Moynihan Jr		County Board
68	Andy Nicholson		County Board
69	Allan Jamir		County Board
70	Tom Sieber		County Board
71	David Steffen		County Board
72	John Vander Leest		County Board
73	John Van Dyck		County Board
74	Corrie Campbell		County Board
75	Patrick Williams		County Board
76	Guy Zima		County Board
77	Chris Hasselbacher	Brown County Human Services	Brown County Transportation Coordinating Committee
78	Diana Brown	NEW Curative Rehabilitation	Brown County Transportation Coordinating Committee
79	Denise Misovec	NEW Curative Rehabilitation	Brown County Transportation Coordinating Committee
80	Tina Whetung	American Red Cross Northeast Wisconsin Chapter	Brown County Transportation Coordinating Committee
81	Julie Tetzlaff	Cerebral Palsy Inc	Brown County Transportation Coordinating Committee
82	Debbie Johnson	Aspiro	Brown County Transportation Coordinating Committee
83	Sandy Popp	Options for Independent Living	Brown County Transportation Coordinating Committee
84	Mary Schlautman	Brown County Aging & Disability Resource Center	Brown County Transportation Coordinating Committee

	Name/Title	Entity	Representing
85	Lisa VanDonsel		Brown County Transportation Coordinating Committee
86	Sue Premo	Volunteer Center	Volunteer Center
87	Devon Christianson	Brown County Aging & Disability Resource Center	Brown County Transportation Coordinating Committee
88		County Board Office staff	Brown County Board of Supervisors Office
89	Troy Streckenbach	County Executive	Brown County Executive
90	Kathy McMurray	Brown County Homeless & Housing Coalition	Brown County Homeless and Housing Coalition; Brown County Taskforce on Chronic Homelessness
91	Pat Finder-Stone		Brown County Transportation Coordinating Committee
92	Kathy Hillary		Brown County Transportation Coordinating Committee
93	Corina Burke	Oneida Nation Tribal Office	
94	Barbara Natelle	Syble Hopp School	Brown County Transportation Coordinating Committee
95	Bobbie Lison	Catholic Charities	Budget Counseling Program
96	Roger Kolb		Chairman, Green Bay Transit Commission/PPP mailing list
97	Byia Martin		Brown County Transportation Coordinating Committee
98	Tony Lee	NEW Community Clinic	Clinic and BadgerCare outreach
99	Alexis Kuklenski	Federal Highway Administration	Community Planner - Federal Highway Administration
100	Chris Bertch	Federal Transit Administration	
101	Marge Liberski-Aznoe	WI Division of Vocational Rehabilitation	Council on Physical Disabilities - WisDOT mailing list
102	Sandra Stokes		Council on Physical Disabilities - WisDOT mailing list
103	Gerald Polus	Brown County Veterans Office	County Veterans Service Officers - WisDOT mailing list
104	Sarah Janda	Northeast Wisconsin Job Center	Disability Navigator Program - WisDOT mailing list
105	Karen Recka	Golden House	Domestic Abuse Shelter

	Name/Title	Entity	Representing
106	Mary J Marks	St. Vincent de Paul Society	Emergency Assistance
107	Jennifer Allen	House of Hope	Emergency Housing
108	Tom Wittig Transit Director	Green Bay Metro	Green Bay Metro and PPP mailing list
109	Patty Kiewiz Asst Transit Director	Green Bay Metro	Green Bay Metro and PPP mailing list
110	Essie Fels Wheels Coordinator	Green Bay Metro	Green Bay Metro
111	David Harp		Green Bay Transit Commission/PPP mailing list
112	Scottie Corrigan		Green Bay Transit Commission/PPP mailing list
113	John Withbroe		Green Bay Transit Commission/Brown County TCC/PPP
114	Marena Pamanet	Independent Living Council of Wisconsin Inc	Independent Living Council of Wisconsin, Inc WisDOT mailing list
115	Hans Shin	Bellin Health	Local business or agency with 1,500 or more employees
116	Transportation Coordinator	Georgia Pacific Corporation	Local business or agency with 1,500 or more employees
117	Transportation Coordinator	Green Bay Area Public Schools	Local business or agency with 1,500 or more employees
118	George Brown Transportation Coordinator	Humana Incorporated	Local business or agency with 1,500 or more employees
119	Transportation Coordinator	Packerland Packing Company Inc	Local business or agency with 1,500 or more employees
120	Mary Gronnert Transportation Coordinator	Schneider National Incorporated	Local business or agency with 1,500 or more employees
121	Transportation Coordinator	Shopko Stores Incorporated	Local business or agency with 1,500 or more employees
122	Transportation Coordinator	St. Vincent Hospital	Local business or agency with 1,500 or more employees
123	Transportation Coordinator	WPS Resources	Local business or agency with 1,500 or more employees
124	Transportation Coordinator	Oneida Tribe of Indians of Wisconsin	Local Government
125	John Gosling	Wisconsin Job Center	Local Service Agency
126	Karrie Schultz	Salvation Army	Local Service Agency

	Name/Title	Entity	Representing
127	Self Sufficiency Program staff	Integrated Community Services/FSS	Local Service Agency
128	Sherri Dessell	Encompass Child Care	Local Service Agency
129	Rosemary Jonas	Integrated Community Services/FSS	Local Service Agency
130	Media	Green Bay Press-Gazette	Media/PPP mailing list
131	Transportation Coordinator	Abel Salvana Assisted Living	Nursing Home and/or CBRF
132	Transportation Coordinator	Adult Family Home	Nursing Home and/or CBRF
133	Transportation Coordinator	Adult Family Home	Nursing Home and/or CBRF
134	Transportation Coordinator	Adult Family - Judy Berger	Nursing Home and/or CBRF
135	Transportation Coordinator	Allouez Parkside Village	Nursing Home and/or CBRF
136	Transportation Coordinator	Angels Touch Assisted Living	Nursing Home and/or CBRF
137	Transportation Coordinator	Anna's House Assisted Living	Nursing Home and/or CBRF
138	Transportation Coordinator	Artisan Senior Living	Nursing Home and/or CBRF
139	Transportation Coordinator	Badger Terrace	Nursing Home and/or CBRF
140	Transportation Coordinator	Bellevue Independent Living	Nursing Home and/or CBRF
141	Transportation Coordinator	Birch Creek	Nursing Home and/or CBRF
142	Transportation Coordinator	Bishops Court	Nursing Home and/or CBRF
143	Transportation Coordinator	Bornemann CBRF North	Nursing Home and/or CBRF
144	Transportation Coordinator	Bornemann CBRF South	Nursing Home and/or CBRF
145	Transportation Coordinator	Bornemann Nursing Home Inc	Nursing Home and/or CBRF
146	Transportation Coordinator	Brenner Place Assisted Living	Nursing Home and/or CBRF
147	Transportation Coordinator	Brookview Meadows	Nursing Home and/or CBRF

	Name/Title	Entity	Representing
148	Transportation Coordinator	Brown County Community Treatment Nursing Home	Nursing Home and/or CBRF
149	Transportation Coordinator	Brown County Mental Health Senior Living	Nursing Home and/or CBRF
150	Transportation Coordinator	Care For All Ages	Nursing Home and/or CBRF
151	Transportation Coordinator	Carrington Manor	Nursing Home and/or CBRF
152	Transportation Coordinator	CBRF	Nursing Home and/or CBRF
153	Transportation Coordinator	Century Ridge	Nursing Home and/or CBRF
154	Transportation Coordinator	Century Ridge II	Nursing Home and/or CBRF
155	Transportation Coordinator	Clarity Care Assisted Living	Nursing Home and/or CBRF
156	Transportation Coordinator	Clarity Care Bernard on Hoffman	Nursing Home and/or CBRF
157	Transportation Coordinator	Compass Development	Nursing Home and/or CBRF
158	Transportation Coordinator	Compass Development LLC	Nursing Home and/or CBRF
159	Transportation Coordinator	Compass Development LLC	Nursing Home and/or CBRF
160	Transportation Coordinator	Cottage Living at Marla Vista	Nursing Home and/or CBRF
161	Transportation Coordinator	Creekside Assisted Living	Nursing Home and/or CBRF
162	Transportation Coordinator	Encompass Development	Nursing Home and/or CBRF
163	Transportation Coordinator	Executive/Harmony Manor	Nursing Home and/or CBRF
164	Transportation Coordinator	Glen Creek Adult Family Home	Nursing Home and/or CBRF
165	Transportation Coordinator	Golden Living Center - Village Gardens	Nursing Home and/or CBRF
166	Transportation Coordinator	Gonzalez Adult Family Home	Nursing Home and/or CBRF
167	Transportation Coordinator	Grancare Nursing Center	Nursing Home and/or CBRF
168	Transportation Coordinator	Hannah II Adult Family Home	Nursing Home and/or CBRF

	Name/Title	Entity	Representing
169	Transportation Coordinator	Harbor House	Nursing Home and/or CBRF
170	Transportation Coordinator	Hil Rockwood Heights Assisted Living	Nursing Home and/or CBRF
171	Transportation Coordinator	Howard Tipler Caregiver	Nursing Home and/or CBRF
172	Transportation Coordinator	Innovated Services	Nursing Home and/or CBRF
173	Transportation Coordinator	Innovative Services Inc	Nursing Home and/or CBRF
174	Transportation Coordinator	Innovative Services	Nursing Home and/or CBRF
175	Transportation Coordinator	Innovative Services Bufflehead Assisted Living	Nursing Home and/or CBRF
176	Transportation Coordinator	Kindred Hearts of Green Bay	Nursing Home and/or CBRF
177	Transportation Coordinator	Kurtz Adult Family Home	Nursing Home and/or CBRF
178	Transportation Coordinator	Libal Street Home	Nursing Home and/or CBRF
179	Transportation Coordinator	LSS Durham Assisted Living CBRF	Nursing Home and/or CBRF
180	Transportation Coordinator	LSS Preble House CBRF	Nursing Home and/or CBRF
181	Transportation Coordinator	Mannette House	Nursing Home and/or CBRF
182	Transportation Coordinator	Manor Care Health Services - East	Nursing Home and/or CBRF
183	Transportation Coordinator	Manor Care Health Services - West	Nursing Home and/or CBRF
184	Transportation Coordinator	Marla Vista Manor	Nursing Home and/or CBRF
185	Transportation Coordinator	Martin Adult Family Assisted Living	Nursing Home and/or CBRF
186	Transportation Coordinator	McCormick Memorial Home	Nursing Home and/or CBRF
187	Transportation Coordinator	Mirage Pointe Adult Family Home	Nursing Home and/or CBRF
188	Transportation Coordinator	Moraine Ridge	Nursing Home and/or CBRF
189	Transportation Coordinator	Nemetz Adult Family Home	Nursing Home and/or CBRF

	Name/Title	Entity	Representing
190	Transportation Coordinator	New Hope Assisted Living	Nursing Home and/or CBRF
191	Transportation Coordinator	Nicolet Highlands Retirement Home	Nursing Home and/or CBRF
192	Transportation Coordinator	Oak Family Care Center	Nursing Home and/or CBRF
193	Transportation Coordinator	Oaks Family Care	Nursing Home and/or CBRF
194	Transportation Coordinator	Oaks Family Care	Nursing Home and/or CBRF
195	Transportation Coordinator	Oaks Family Care Center	Nursing Home and/or CBRF
196	Transportation Coordinator	Odd Fellows Home	Nursing Home and/or CBRF
197	Transportation Coordinator	Odd Fellows Rebekah Home Assisted Living	Nursing Home and/or CBRF
198	Transportation Coordinator	Oriole	Nursing Home and/or CBRF
199	Transportation Coordinator	Our Place Assisted Living	Nursing Home and/or CBRF
200	Transportation Coordinator	Parkview Manor Health Rehab Center	Nursing Home and/or CBRF
201	Transportation Coordinator	Parkway Highlands Retirement Living Community	Nursing Home and/or CBRF
202	Transportation Coordinator	Patient Pines Assisted Living Inc	Nursing Home and/or CBRF
203	Transportation Coordinator	Platten Street Adult Family Home	Nursing Home and/or CBRF
204	Transportation Coordinator	Rebekah Haven	Nursing Home and/or CBRF
205	Transportation Coordinator	Rennes Health and Rehab Center	Nursing Home and/or CBRF
206	Transportation Coordinator	Ridge Pointe CBRF Assisted Living	Nursing Home and/or CBRF
207	Transportation Coordinator	Ridges Group Home	Nursing Home and/or CBRF
208	Transportation Coordinator	San Luis Med and Rehab	Nursing Home and/or CBRF
209	Transportation Coordinator	Santa Maria Nursing Home	Nursing Home and/or CBRF
210	Transportation Coordinator	Senior Manor	Nursing Home and/or CBRF

	Name/Title	Entity	Representing
211	Transportation Coordinator	Sherwood Place	Nursing Home and/or CBRF
212	Transportation Coordinator	Superior Road Adult Family Home Assisted Living	Nursing Home and/or CBRF
213	Transportation Coordinator	Willow Creek Family Home Assisted Living	Nursing Home and/or CBRF
214	Transportation Coordinator	Woodside Haven Inc	Nursing Home and/or CBRF
215	Transportation Coordinator	Woodside Lutheran Home	Nursing Home and/or CBRF
216	Transportation Coordinator	Woodside Manor	Nursing Home and/or CBRF
217	Transportation Coordinator	Woodside Manor	Nursing Home and/or CBRF
218	Transportation Coordinator	Woodside Oaks	Nursing Home and/or CBRF
219	Transportation Coordinator	Wyndemere Assisted Living	Nursing Home and/or CBRF
220	Transportation Coordinator	Zambon Adult Family Home	Nursing Home and/or CBRF
221	Brandon Cooper	Oneida Public Transit System	Oneida Tribe/BC Transportation Coordinating Comm.
222	Ellie Jarvie	Brown County Human Services	Outpatient Clinic, AODA programs
223	Cathy Putman	Brown County Homeless & Housing Coalition	PPP mailing list
224	John Breuninger	Little Bear Development Center	PPP mailing list
225	Mike Finn	Oneida Tribe of Wisconsin	PPP mailing list
226		Cablevision - Time Warner Cable	PPP mailing list
227	Program Director	WDUZ Radio	PPP mailing list
228	UW-Green Bay	News Service	PPP mailing list
229	Office of Communications	St Norbert College	PPP mailing list
230	Student Services	Northeast WI Tech College	PPP mailing list
231		Green Bay Area Chamber of Commerce	PPP mailing list

	Name/Title	Entity	Representing
232		Brown County Central Library	PPP mailing list
233		Mason Manor	PPP mailing list
234		League of Women Voters	PPP mailing list
235		Southeast Asian Community Center	PPP mailing list
236	Andy Rosendahl	Astor	PPP mailing list
237	Bobbie Lison	Astor East River	PPP mailing list
238	Skip Wilson	Baird Creek	PPP mailing list
239	David Blackman	Bay Highlands	PPP mailing list
240	Ryan Batal	Colburn	PPP mailing list
241	Ben Heiman	Downtown	PPP mailing list
242	Trudy Jacobson	East Shore Drive	PPP mailing list
243	Carolyn Stoviak	Fireman's Park	PPP mailing list
244	Joy Glass	Fisk Addition	PPP mailing list
245	Lawrence Ferry	Fort Howard	PPP mailing list
246	Diane Matthews	Graceland	PPP mailing list
247	Mike Erickson	Joanne's Park	PPP mailing list
248	Becky Lemmens	John Muir Park	PPP mailing list
249	Andrew Opicka	Lake Largo	PPP mailing list
250	Gary Coleman	Lombardi	PPP mailing list
251	David Hintz	MacArthur Heights	PPP mailing list
252	Beth Nadolski Spears	Maple Arches	PPP mailing list

	Name/Title	Entity	Representing
253	Jim Ridderbush	Marquette Park	PPP mailing list
254	Bob Heroux	Mather Heights	PPP mailing list
255	Scott DeBaker	McAuliffe Park	PPP mailing list
256	Ann Hartman	Navarino	PPP mailing list
257	Dick Pigeon	Nicolet Drive	PPP mailing list
258	Greg Maloney	Northwest Railway Garden	PPP mailing list
259	Dan Theno	Oak Grove	PPP mailing list
260	Jim Haskins	Olde Norwood	PPP mailing list
261	Rae Ellen Smith	Perkins Park Area	PPP mailing list
262	Jen DuMez	Red Smith	PPP mailing list
263	Patrick Kloster	Schmitt Park	PPP mailing list
264	Miriah Kelley	Seymour Park	PPP mailing list
265	Debra Tilot	Starlite	PPP mailing list
266	Steve Boehlen	Three Corners	PPP mailing list
267	Scott Vanidestine	Wilder Park	PPP mailing list
268	Adam Moore	Woodside Heights	PPP mailing list
269	Paula Breese	Family and Childcare Resources of NEW	PPP mailing list
270	Toni Loch	Howe Neighborhood Family Resource Center	PPP mailing list
271	Manager	1st Choice Shuttle Service	Private Transportation Provider/PPP mailing list
272	Manager	A-1 Medi Mobile	Private Transportation Provider/PPP mailing list
273	Manager	Able Taxi and Tours LLC	Private Transportation Provider/PPP mailing list

	Name/Title	Entity	Representing
274	Manager	Ace Yellow/Checker Yellow/Green Bay Yellow	Private Transportation Provider/PPP mailing list
275	Manager	American Shuttle	Private Transportation Provider/PPP mailing list
276	Manager	Astro Shuttle	Private Transportation Provider/PPP mailing list
277	Manager	Bay Bus Shuttle LLC	Private Transportation Provider/PPP mailing list
278	Manager	DW Shuttle	Private Transportation Provider/PPP mailing list
279	Manager	Elite Shuttle	Private Transportation Provider/PPP mailing list
280	Manager	First Student	Private Transportation Provider/PPP mailing list
281	Manager	Kobussen Buses	Private Transportation Provider/PPP mailing list
282	Manager	Lamers Bus Lines Inc	Private Transportation Provider/PPP mailing list
283	Manager	Limo Shuttle and Taxi	Private Transportation Provider/PPP mailing list
284	Geo Jackson	MV Transportation	Private Transportation Provider/PPP mailing list
285	Manager	Packerland Shuttle/Taxi	Private Transportation Provider/PPP mailing list
286	Manager	Renegade Taxi and Shuttle	Private Transportation Provider/PPP mailing list
287	Manager	Tundra Valley Taxi LLC	Private Transportation Provider/PPP mailing list
288	Karen Galske	Freedom House Ministries	Shelter
289	Kitty Barry	Options for Independent Living	Transit Development Plan Advisory Committee
290	Bree Decker	The Salvation Army	Transitional Housing
291	Meika Burnikel	Family Services Transitional Living Program	Transitional Housing
292	Mary Brick	Syble Hopp School	Transportation
293	Robert Koeller	Wisconsin Community Action Agency	Wisconsin Community Action Agency WisDOT mailing list
294	Florence Petri	Oneida Nation Elderly Services	Wisconsin County/Tribal Aging Unit WisDOT mailing list

	Name/Title	Entity	Representing
295	Derek Weyer	WI Dept of Transportation	Wisconsin Department of Transportation - NE Region
296	Judy M Foss	WI Dept of Transportation	Wisconsin Department of Transportation
297	Susan Morrison	WI Dept of Transportation	Wisconsin Department of Transportation
298	Brinda Ruggles	Wisconsin Department of Workforce Development	Wisconsin Department of Workforce Development Division of Vocational Rehabilitation - WisDOT mailing list
299	Darci Vickman	Regional Coordinator - DHFS	Wisconsin Pathways to Independence
300	James Golembeski	Bay Area Workforce Development Board Inc	Wisconsin Workforce Development Agency WisDOT mailing list
301	Dick Marbes	Disabled American Veterans	DAV
302	Neighborhood Specialist	City Hall - Room 604	
303	Mai Yia Yang	Forward Service Corporation	
304	Brian Covey	Forward Service Corporation	
305	Jennifer Nelson Executive Director	Literacy Green Bay	
306	Pam Busch Mobility Manager	Door County Transportation Consortium	
307	John Werner	City of Green Bay Common Council	Green Bay Transit Commission
308	Ron Antonneau	Wisconsin Public Service	Green Bay Transit Commission

Appendix C Brown County Meeting - Agenda

AGENDA Coordinated Public Transit – Human Services Transportation Plan for Brown County, Wisconsin

Monday, August 12, 2013
Green Bay Metro Transportation Center Commission Room
901 University Avenue
Green Bay, Wisconsin
9:00 a.m.

ORDER OF BUSINESS

1. Welcome and introductions.
2. Discussion of the federal requirement for a *locally developed coordinated public transit-human services transportation plan*.
3. Assessing Specialized Transportation Services in Brown County.
 - Populations of Elderly, Persons with Disabilities, and Low-Income Individuals
 - Overview of existing transportation services/programs, with presentations from:
 - **Patty Kiewiz**, Assistant Director
Green Bay Metro
Fixed Route Bus and Paratransit Services
 - **Tina Whetung**, Program Manager for Transportation Services
American Red Cross Northeast Region
Transportation Services
 - **Cole Runge**, Principal Planner
Brown County Planning Commission/MPO
Section 5310 Program Changes
 - Review progress of *Action Plan* developed in 2008
4. Identification of transportation service needs and gaps by meeting participants.
5. Approval of 2013-2018 *Program of Projects*.
6. Other matters.
7. Adjourn.

Please **RSVP** to Lisa J. Conard at conard_lj@co.brown.wi.us or (920) 448-6489 by Wednesday, August 7.

ANY PERSON WISHING TO ATTEND WHO, BECAUSE OF A DISABILITY, REQUIRES SPECIAL ACCOMMODATION SHOULD CONTACT THE BROWN COUNTY HUMAN RESOURCES DEPARTMENT AT (920) 448-4065 BY FRIDAY, AUGUST 9 SO ARRANGEMENTS CAN BE MADE.

Brown County Coordinated Public Transit-Human Services Transportation Plan

Meeting Notice



You are invited...

A meeting will be held to conduct an assessment of public transit-human services transportation coordination and to review a list of programmed transportation projects. The meeting will be facilitated by Brown County Planning Commission/MPO staff and will be held on:

**Monday, August 12, 2013
Green Bay Metro Transportation Center
901 University Avenue
Green Bay, Wisconsin
9:00 a.m.**

Please **RSVP** to Lisa J. Conard at conard_lj@co.brown.wi.us or (920) 448-6489 by Wednesday, August 7.

ANY PERSON WISHING TO ATTEND WHO, BECAUSE OF A DISABILITY, REQUIRES SPECIAL ACCOMMODATION SHOULD CONTACT THE BROWN COUNTY HUMAN RESOURCES DEPARTMENT AT (920) 448-4065 BY FRIDAY, AUGUST 9 SO ARRANGEMENTS CAN BE MADE.

**Appendix E
Brown County Meeting - Evaluation Form and Results**

**Coordinated Public Transit-Human Services Transportation Plan Meeting
for Brown County
August 12, 2013
Green Bay Metro – Commission Room
901 University Avenue
Green Bay, WI 54302**

Evaluation form Summary

For each item below, place a check mark in the box that best expresses your opinion.

	Issue	Strongly Agree	Agree	No Opinion	Disagree	Strongly Disagree
1.	The information covered was understandable.	44%	52%	4%	0%	0%
2.	The meeting provided a good forum for communication about public transit-human services transportation coordination.	56%	44%	0%	0%	0%
3.	Developing the draft action plan was meaningful and valuable.	24%	64%	12%	0%	0%
4.	The draft action plan developed is comprehensive.	24%	68%	8%	0%	0%
5.	I feel coordination in the county will be improved with implementation of the action plan. <i>(one attendee did not reply)</i>	40%	56%	0%	0%	0%
6.	The facilitator(s) was knowledgeable about public transit – human services transportation services in Brown County.	60%	40%	0%	0%	0%
7.	The presentations (Green Bay Metro, Red Cross, and Brown County staff) were informative.	48%	52%	0%	0%	0%
8.	The time allocated for the meeting was just right.	44%	48%	8%	0%	0%

Please provide written comments below or on the reverse side. Thank you.

Written comments received:

We need to challenge ourselves to try and meet all the (transportation) needs.

Engage medical community in this process further (on the Transportation Coordinating Committee).

Appendix F
Notice of Public Review Period and Notice of Public Meeting



STATE OF WISCONSIN
 BROWN COUNTY

BC PLANNING DEPT-LEGALS
 305 E WALNUT, ROOM 320
 GREEN BAY, WI 54301

Natalie Bridenhagen

Being duly sworn, doth depose and say that she/he is an authorized representative of the Green Bay Press Gazette, a newspaper published in Brown and Kewaunee Counties, Wisconsin, and that an advertisement of which the annexed is a true copy, taken from said paper, which was published therein on

Account Number: 284368

Ad Number: 6835160

Published Date: July 29, 2013

Published Date: August 05, 2013

Total Ad Cost: \$53.61

(Signed) *Natalie Bridenhagen* (Date) 8/6/13
 Legal Clerk

Signed and sworn before me

Shirley M. Zaleski
 Notary Public, Brown County, Wisconsin

My commission expires 10/01/2013

NOTICE OF PUBLIC MEETING ON THE DEVELOPMENT OF THE COORDINATED PUBLIC TRANSPORTATION SERVICES TRANSPORTATION PLAN FOR BROWN COUNTY, WISCONSIN
 All interested persons are advised of a public meeting on the development of the Coordinated Public Transit-Human Services Transportation Plan for Brown County, Wisconsin. The meeting will include the review of a list of projects qualifying for Federal Section 5303 Enhanced Mobility of Seniors and Persons with Disabilities Program. The meeting will also include the circulation of an assessment of human services transportation coordination for transportation providers and stakeholders who attend this meeting. The public meeting will take place on Monday, August 12, 2013 Green Bay Metro Transportation Center 801 University Avenue Green Bay, Wisconsin 9:30 a.m.
 Published by Sandy Jimo County Clerk July 29, August 5, 2013 10:04AM

BC PLANNING DEPT-LEGALS
 Re: Pub Mtg Notice 8/12



GANNETT WI MEDIA
 435 EAST WALNUT ST.
 PO BOX 23430
 GREEN BAY, WI 54305-3430

GANNETT
 Wisconsin Media
 Delivering Customers. Driving Results.

PHONE 920-431-8298
 FAX 877-943-0443
 EMAIL: legal@greenbaypressgazette.com

Appendix G
County Transportation Services Inventory Worksheets

1. Green Bay Metro – Fixed Route Bus Service

Program Name:	Green Bay Metro
Sponsoring Agency:	Green Bay Metro 901 University Avenue Green Bay, WI 54302
Phone/Information:	(920) 448-3450
Contact Person:	Tom Wittig, General Manager
Eligibility:	General Public
Days and Hours of Operation:	Monday – Friday 5:15 a.m. - 9:45 p.m. Saturday 7:15 a.m. - 6:45 p.m. No Sunday or major holidays
Cost:	Adults \$1.50; Students \$1.00; Reduced \$0.75; Discounted 30-Day passes are available
Vehicle Type:	37 buses ranging from 30' to 45'
Lift/Ramp Equipped:	all full service vehicles are lift or ramp equipped
Scheduling:	fixed route
Volunteers:	None
Funding Sources:	85.20 (operating), 5307 (operating), 5309 (capital), local funds, advertising, and fares

2. Green Bay Metro – Paratransit Program

Program Name:	Green Bay Metro – Paratransit Program
Sponsoring Agency:	Green Bay Metro 901 University Avenue Green Bay, WI 54302
Contracted Provider:	Green Bay Metro RE: Paratransit Program/MV 901 University Avenue Green Bay, WI 54302
Phone/Scheduling:	(920) 465-4488
Contact Person:	Patty Kiewiz, Assistant Director, Green Bay Metro (920) 448-3450
Eligibility:	individuals with qualifying disabilities based on ADA regulations
Days and Hours of Operation:	Monday – Friday 5:15 a.m. - 9:45 p.m. Saturday 7:15 a.m. - 6:45 p.m. No Sunday or major holidays
Cost:	\$3.00 origin to destination; \$7.00 agency
Vehicle Type:	23
Lift/Ramp Equipped:	all vehicles are lift equipped
Scheduling:	call 24 hours in advanced; subscription
Volunteers:	None
Funding Sources:	85.20 (operating), 5307 (operating), local funds, advertising, and fares

3. American Red Cross Northeast Region

Program Name:	American Red Cross
Sponsoring Agencies:	American Red Cross Northeast Region 2131 Deckner Avenue Green Bay, WI 54302 <hr/> Aging and Disability Resource Center of Brown County 300 South Adams Street Green Bay, WI 54301
Phone/Reservations:	(920) 227-4272
Contact Person:	Tina Whetung, Transportation Services Director; (920) 227-4271
Eligibility:	Persons age 60 years or older or individuals with disabilities
Days and Hours of Operation:	Monday – Friday 8:00 a.m. – 4:30 p.m.
Cost:	\$3.00 per one-way trip; advance purchase tickets available
Vehicle Type:	13 buses, 1 van, 3 mini vans, and 7 sedans
Lift/Ramp Equipped:	10 buses and 3 mini vans are lift/ramp equipped
Scheduling:	demand response (call 24-48 hours in advance); other (see narrative)
Volunteers:	85 volunteer drivers
Funding Sources:	85.21 (operating), 5310 (vehicles), fares, and donations

4. Oneida Transit

Program Name:	Oneida Public Transit
Sponsoring Agency:	Oneida Tribe of Indians of Wisconsin/Oneida Public Transit 3759 West Mason Street Suite #5 Green Bay, WI 54313
Phone/Information:	(920) 496-5770
Contact Person:	Brandon Cooper, Director
Eligibility:	General Public
Days and Hours of Operation:	Monday – Friday 5:00 a.m. – 9:00 p.m.
Fares within Reservation	Adults \$1.50 (one-way); Students \$1.00 (one-way) E&D \$1.00 (one-way) or \$1.50 (round-trip); passes available
Vehicle Type:	9 buses and 2 mini-vans
Lift/Ramp Equipped:	buses are lift equipped; mini-vans have ramps
Scheduling:	primarily demand response; limited fixed route
Volunteers:	None
Funding Sources:	85.21 (operating), 5307 (operating), 5309 (capital), local funds, and fares