

2016 Coordinated Public Transit- Human Services Transportation Plan for Brown County, Wisconsin





U.S. Department
of Transportation
**Federal Highway
Administration**



U.S. Department
of Transportation
**Federal Transit
Administration**



The preparation of this report has been financed in part through grants from the Federal Highway Administration and Federal Transit Administration, U.S. Department of Transportation, under the Metropolitan Planning Program, Section 104(f) of Title 23, U.S. Code. The contents of this report do not necessarily reflect the official views or policy of the U.S. Department of Transportation.



The Brown County Planning Commission/Metropolitan Planning Organization (MPO) for the Green Bay Urbanized Area invites you to follow us on Facebook at: <https://www.facebook.com/pages/Brown-County-Planning-Commission-Green-Bay-MPO/751165931582219> or on Twitter at <https://mobile.twitter.com/BCPCGreenBayMPO>.

Brown County Transportation Coordinating Committee

- | | |
|---------------------------------------|---------------------------------------------|
| Diana Brown (Curative Connections) | Sandy Popp (Options for Independent Living) |
| Vinny Caldara (MV Transportation) | Cole Runge (BCPC/GB MPO) |
| Corrie Campbell (Brown County Board) | Mary Schlautman (ADRC) |
| Brandon Cooper (Oneida Nation) | Julie Tetzlaff (CP Center) |
| Mallory Cornelius (Aspiro) | Lisa VanDonsel (ADRC Board) |
| Pat Finder-Stone (Citizen Member) | Derek Weyer (WisDOT – Northeast Region) |
| Patty Kiewiz (Green Bay Metro) | Tina Whetung (Curative Connections) |
| Greg Maloney (Lakeland Care District) | Genny Willemon (BC Human Services) |
| Linda Mamrosh (Citizen Member) | John Withbroe (GB Transit Commission) |
| Barbara Natelle (Syble Hopp School) | Vacant (Brown County Executive) |

Brown County Planning Commission/Green Bay MPO Staff

- Cole Runge, Principal Planner/MPO Director
- Lisa Conard, Senior Transportation Planner
- Ker Vang, Transportation/GIS Planner

Table of Contents

Chapter 1 – Introduction	4
Coordinated Public Transit-Human Services Transportation Plan Requirement	4
Participation Process.....	4
Meeting Record	5
Chapter 2 – Demographics	6
Population by Age	6
Senior Population	7
Individuals with Disabilities Population	7
Low Income Individuals Population	7
Chapter 3 – Transportation Providers in Brown County	9
Inventory of Public Transit-Human Services Transportation Services in Brown County.....	9
Green Bay Metro.....	9
Non-Emergency Medical Transportation (NEMT) service provided by the State of Wisconsin Department of Health Services (DHS)	13
Aging and Disability Resource Center of Brown County	17
Curative Connections	18
Oneida Public Transit.....	20
Oneida Tribe Elder Services	20
Salvation Army	20
Disabled American Veterans (DAV)	20
Rural Driver Escort.....	20
Brown County Human Services Department Van Driver	21
ADRC Access and Expansion Project.....	21
Social Network (Friends, Family, & Neighbors).....	21
Uber and other Transportation Network Companies (TNCs).....	21
Inventory of Private Transportation Providers in Brown County	21
Chapter 4 – Action Plan	27
Process	27
Chapter 5 – Program of Projects	43
2017-2021 Program of Projects	43
Chapter 6 – Conclusion	45
Conclusion	45

Appendices

Appendix A – Brown County Meeting – Letter of Invitation to Participate.....	47
Appendix B – Brown County Meeting – List of Invitees and Worksheet to Document County Meeting Invitations	48
Appendix C – Brown County Meeting – Agenda	54
Appendix D – Brown County Meeting – Flyer	55
Appendix E – Brown County Meeting – Evaluation Form and Results	56
Appendix F – Notice of Public Review Period and Notice of Public Meeting.....	57
Appendix G – County Transportation Services Inventory Worksheets	58

Chapter 1 - Introduction

Coordinated Public Transit-Human Services Transportation Plan Requirement

The human services transportation provisions of the federal Fixing America's Surface Transportation Act (FAST Act) aim to improve transportation services for seniors, individuals with disabilities, and low income individuals by ensuring that communities coordinate transportation resources provided through multiple federal programs. Coordination will enhance transportation access, minimize duplication of services, and facilitate the most appropriate cost-effective transportation possible with available resources. To express these goals, the county is required to publish a locally-developed *Coordinated Public Transit-Human Services Transportation Plan*.

The FAST Act requires that the county *Coordinated Public Transit-Human Services Transportation Plan* identify an approved program of projects prior to distribution of funds from the Federal Section 5310 - Enhanced Mobility of Seniors and Individuals with Disabilities Program.

In addition, the Wisconsin Department of Transportation (WisDOT) has required or recommended the following nine items be included in the plan. They include:

1. County Meeting Invitation List
2. County Meeting Participant List
3. Copy of the newspaper *Notice of Public Comment Period and Meeting*
4. County Meeting Flyer
5. County Meeting Record
6. County Inventory of Transportation Programs and Services
7. County Coordination & Assessment Action Plan
8. County List of Approved Projects for Section 5310
9. County Meeting Evaluation and Summary

All of these items are included in the plan.

Participation Process

The FAST Act also requires that the *Coordinated Public Transit-Human Service Transportation Plan* be developed through a local process that includes representatives from public and private transportation providers, human service agencies, interested parties, and the general public.

WisDOT has developed a county meeting process to comply with this requirement. In the case of Brown County, the Metropolitan Planning Organization (MPO) planners were chosen to coordinate the project, conduct meetings, and write the final report. The MPO planners were chosen because they are currently responsible for reviewing federal and state program applications, need to be aware and knowledgeable of transit programs and funding streams in each county, and are an independent and objective entity.

Brown County Planning Commission/MPO staff developed a list of potential representatives using WisDOT-endorsed guidelines and invited them to participate in the county meeting (see Appendix A for a copy of the letter requesting participation, Appendix B for a list of the Brown County meeting invitees and documentation, Appendix C for a copy of the Brown County meeting agenda, and Appendix D for a copy of the Brown County meeting flyer). In addition, Brown County Planning Commission/MPO staff established a 30-day public comment period and issued a meeting invitation to the general public (see Appendix F for a copy of the *Notice of Public Review Period and Notice of Public Meeting*).

Meeting Record

The Brown County meeting was held on September 27, 2016. The county meeting participants are listed below:

Brown County Meeting Participants List

	Name	Representing
1	Aaron Schuette	Brown County Planning Commission
2	Andrew Vissers	Village of Bellevue
3	Ashley Kohls	St. Vincent de Paul
4	Christel Giesen	ADRC of Brown County
5	Cole Runge	Brown County Planning Commission/Green Bay MPO
6	Devon Christianson	ADRC of Brown County
7	Dianna DeMond	Bellevue Retirement Senior Community
8	Greg Maloney	Lakeland MCO/BC Transportation Coordinating Committee
9	Heidi VanDonsel	Allouez Parkside Village
10	Jim Genrich	McCormick Assistant Living
11	Joyce Hoes	Elder Services Oneida Nation
12	Kathy Jerry	Schmitt Park Neighborhood Association
13	Kathy Riley	League of Women Voters
14	Kay Czech	Georgia Pacific/KBX
15	Kirsten Hutchison	Brookview Meadows
16	Linda Mamrosh	Brown County Transportation Coordinating Committee
17	Lisa Conard	Brown County Planning Commission/Green Bay MPO
18	Lori Barnstorff	St. Vincent Hospital/St Mary's Hospital
19	Mary Brick	Syble Hopp School/BC Transportation Coordinating Committee
20	Mary Schlautman	ADRC/BC Transportation Coordinating Committee
21	Mary Schweitzer	Santa Maria and the Town of Ledgeview
22	Pam Bush	Door-Tran/Mobility Manager
23	Pat Finder-Stone	ADRC Board of Directors/BC Transportation Coordinating Committee
24	Patty Kiewiz	Green Bay Metro
25	Rebecca Nyberg	Brown County Health Department/Transportation Subcommittee
26	Rick Jerry	Schmitt Park Neighborhood Association
27	Tina Whetung	Curative Connections
28	Troy Huhtala	Golden Living
29	Vincent Caldara	MV Transportation
30	Virginia Mamrosh	General Public

Chapter 2 – Demographics

Population by Age

The following table summarizes the population of Brown County by age cohort.

**2010 U.S. Census
Brown County, Wisconsin**

Age	Female	Male	Total	Percent of Total
Under 5 years	8,405	8,762	17,167	6.9%
5 to 9 years	8,422	8,725	17,147	6.9%
10 to 14 years	8,369	8,754	17,123	6.9%
15 to 19 years	8,589	8,867	17,456	7.0%
20 to 24 years	8,802	8,619	17,421	7.0%
25 to 29 years	8,788	8,842	17,630	7.1%
30 to 34 years	7,956	8,377	16,333	6.6%
35 to 39 years	7,712	7,977	15,689	6.3%
40 to 44 years	8,477	8,712	17,189	6.9%
45 to 49 years	9,730	9,700	19,430	7.8%
50 to 54 years	9,168	9,225	18,393	7.4%
55 to 59 years	8,063	7,806	15,869	6.4%
60 to 64 years	6,322	6,049	12,371	5.0%
65 to 69 years	4,511	3,957	8,468	3.4%
70 to 74 years	3,466	3,101	6,567	2.6%
75 to 79 years	3,031	2,250	5,281	2.1%
80 to 84 years	2,520	1,689	4,209	1.7%
85 years and over	3,018	1,246	4,264	1.7%
Total:	125,349	122,658	248,007	100.0%

Source: U.S. Census Bureau.

Senior Population

In Brown County, 28,789 people (11.6% of the population as of 2010) are age 65 or older.

Individuals with Disabilities Population

The definition used to define individuals with disabilities is:

Individuals who, because of any temporary or permanent physical or mental condition or institutional residence, are unable, without special facilities or special planning or design, to use available transportation facilities and services as effectively as persons who are not so affected.

In Brown County, 26,701 people (10.8% of the population as of 2010) have a disability.

Low Income Individuals Population

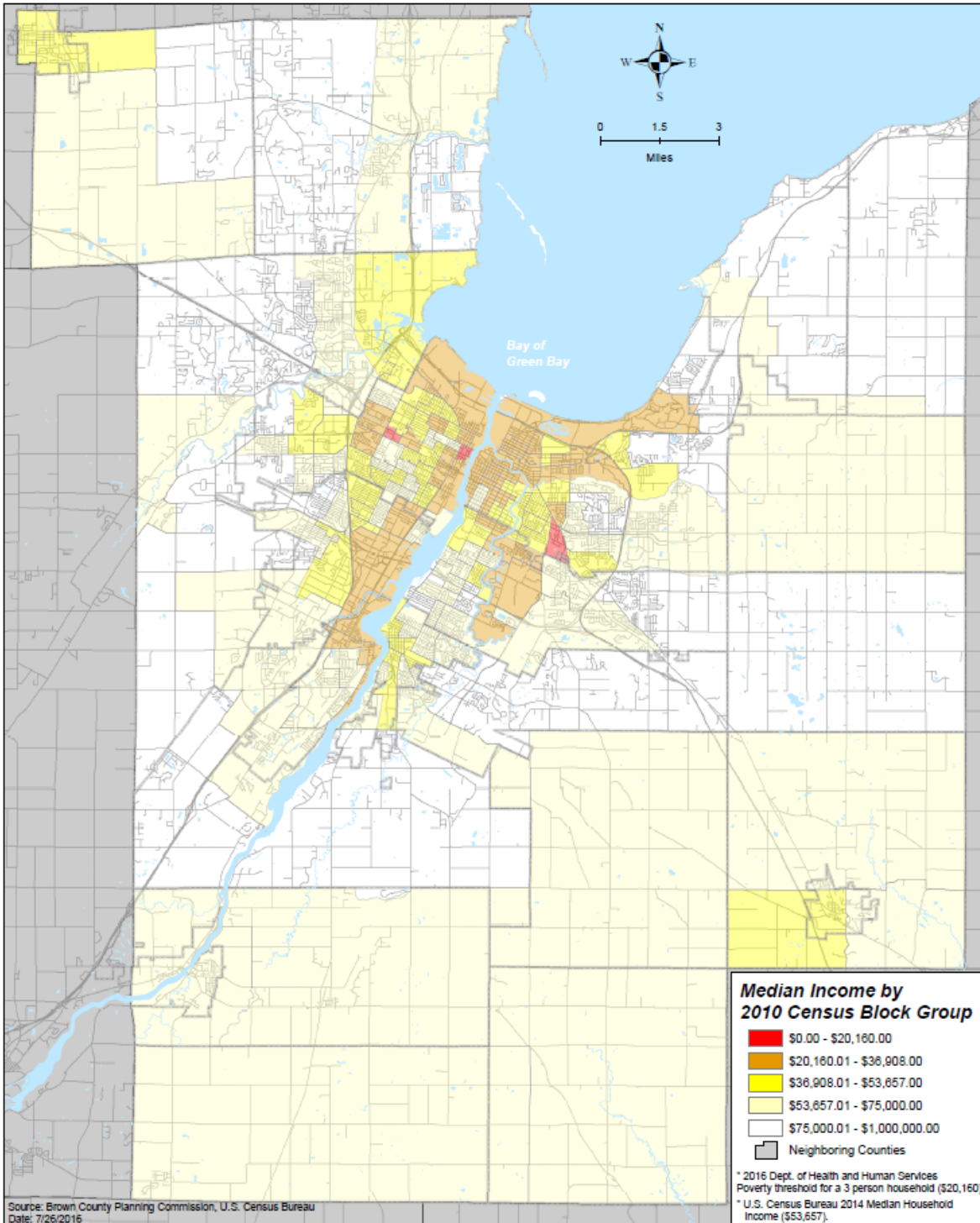
Seniors and individuals with disabilities often have low incomes. This can create barriers to transportation services. In Brown County, 25,545 people (10.3% of the population as of 2010) live below the poverty level.

The following map depicts median household income ranges in Brown County.



Median Household Income by 2010 Census Block Group

Brown County, WI



Chapter 3 – Transportation Providers in Brown County

Inventory of Public Transit-Human Services Transportation Services in Brown County

County Transportation Services Inventory Worksheets can be seen in Appendix G.

1. Green Bay Metro

Green Bay Metro is located at 901 University Avenue in Green Bay. Passengers benefit from an indoor waiting area, information counter, bus arrival/departure boards, vending machines, and public restrooms. Outside, a large canopy covers many bus stalls to protect passengers from falling rain and snow. In addition, each bus route has a designated stall.

Green Bay Metro – 901 University Avenue, Green Bay, WI

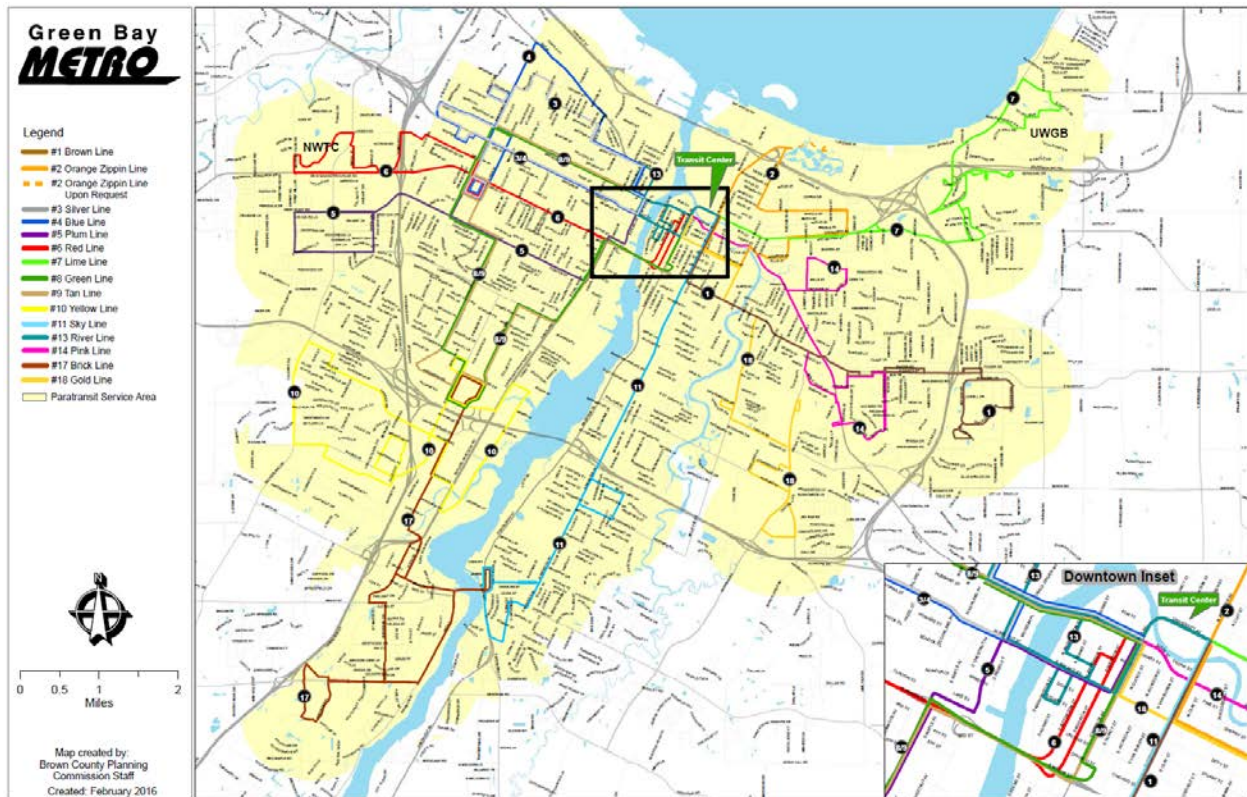


a. Fixed Route Service

Green Bay Metro operates 15 full service and a number of limited service bus routes throughout the Green Bay area. Fixed route transit services are provided to the cities of Green Bay and De Pere and the villages of Allouez, Ashwaubenon, and Bellevue. Service is provided Monday through Friday from 5:15 a.m. to 9:45 p.m. and on Saturday from 7:15 a.m. to 6:45 p.m. Service is not provided on Sunday; however, limited service routes operate for Sunday Packers home games.



Green Bay Metro Full Service Routes with Paratransit Boundary Shaded



b. Fixed Route Service Fares

The current fare structure is as follows:

Green Bay Metro Fixed Route Fares for 2016

Fare Category	Cash- No Transfer	Day Pass	30-Day Pass
Adult	\$1.50	\$3.00	\$35.00
Student (K-12)	\$1.00	\$2.00	\$20.00
Reduced Fare	\$0.75	\$1.50	\$25.00

Metro provides over 1.3 million unlinked passenger trips per year and averages approximately 630 mobility device boardings per month on the fixed route system.

c. Paratransit Program

Paratransit is an alternative to the fixed route Metro system. It is intended for people who cannot be served by Metro's fixed route buses due to disabilities. Service is more flexible in terms of scheduling and routing, is offered on a demand/response basis, and is usually provided by low capacity vehicles, such as vans. Paratransit is meant to be complementary to the fixed route system in terms of service area, service days and hours, and cost.

The Americans with Disabilities Act (ADA) became law on July 26, 1990. The law is intended to provide equal access rights for people with disabilities in the areas of employment, public services, public transportation, private accommodations, and telecommunications. The law requires recipients of Federal Transportation Administration (FTA) funds (like Green Bay Metro) to prepare a program for providing transportation services to people with disabilities by using both lift-equipped fixed route service and complementary paratransit service. Individuals are eligible to use ADA public transportation service or paratransit if they satisfy disability standards established by the ADA.

Paratransit Service Provided

Paratransit services are provided to individuals with qualifying disabilities to the cities of Green Bay and De Pere and the villages of Allouez, Ashwaubenon, and Bellevue within $\frac{3}{4}$ mile of the full service fixed routes. Service is provided Monday through Friday from 5:15 a.m. to 9:45 p.m. and on Saturday from 7:15 a.m. to 6:45 p.m. Service is not provided on Sunday.

Paratransit Provider

Green Bay Metro currently contracts with a private transportation company, MV, to provide this service.

Vehicles used by MV



The current contract allows MV to receive \$23.39 per for each one-way trip in 2016. This amount does not factor in the fuel costs associated with the program or Green Bay Metro staff time to oversee many aspects of the program.

Paratransit Fare Structure

Origin to Destination. As required by law, the origin to destination fare is based on twice the adult fixed route cash fare.

Agency Trip. An agency is defined as an organization that serves persons who qualify for human service- or transportation-related programs or services due to disabilities, income, or advanced age. Many paratransit clients receive services/support via a local human service agency, including funds for offsetting the cost of transportation. Many transit systems have implemented an agency rate. Agency rates vary and some systems charge the passenger the full cost of providing a qualifying trip.

Paratransit Trip Cost Breakdown – 2016

Fare Category	Passenger Cost per Trip	Green Bay Metro Cost per Trip	Total Cost per Trip*
Origin to Destination	\$3.00	\$22.88	\$25.88
Agency Trip	\$15.00	\$10.88	\$25.88

*Total Cost per Trip includes per trip payment to MV, fuel, and other program expenses.

The following table summarizes paratransit ridership and direct trip costs which includes payment to the provider and fuel. It does not include Metro staff time associated with the program.

Paratransit Program 1998-2015

Year	Trips	Direct Trip Costs
1998*	69,621	\$602,918
1999	81,571	\$908,077
2000	94,057	\$1,081,756
2001	97,000	\$1,161,209
2002**	98,320	\$1,484,632
2003	96,509	\$1,515,223
2004	100,601	\$1,664,826
2005	96,039	\$1,639,625
2006	72,979	\$1,305,135
2007	69,499	\$1,243,337
2008	69,140	\$1,337,548
2009	68,868	\$1,313,787
2010	67,384	\$1,337,797
2011***	63,337	\$1,330,561
2012	59,399	\$1,393,869
2013	55,821	\$1,543,765
2014	54,477	\$1,440,195
2015	48,899	\$1,195,321

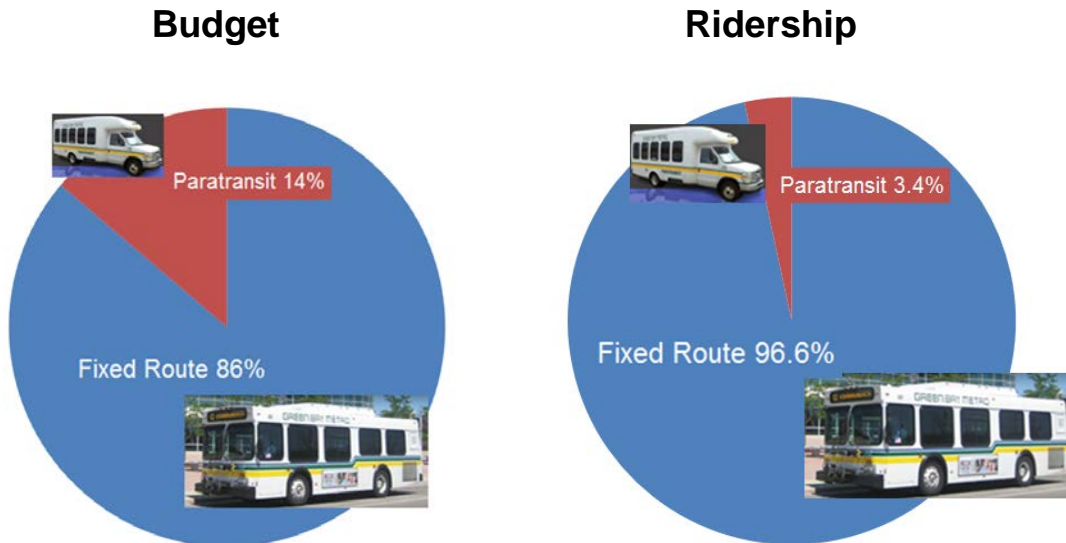
* Under contract with Lamers, Inc.

** Under contract with Medi-Vans.

*** Under contract with MV Transportation in November.

Budget Breakdown.

Approximately 14.0 percent of Metro's 2015 budget was devoted to paratransit service, but only about 3.4 percent of the trips were taken via paratransit.



2. Non-Emergency Medical Transportation (NEMT) service provided by the State of Wisconsin Department of Health Services (DHS)



WISCONSIN DEPARTMENT
of **HEALTH SERVICES**

Non-emergency medical transportation **may** be provided to individuals enrolled in one of the following programs:

- Wisconsin Medicaid
- BadgerCare Plus
- Family Planning Only Services
- Tuberculosis-Related Services-Only Benefit
- BadgerCare Plus Express Enrollment for Pregnant Women

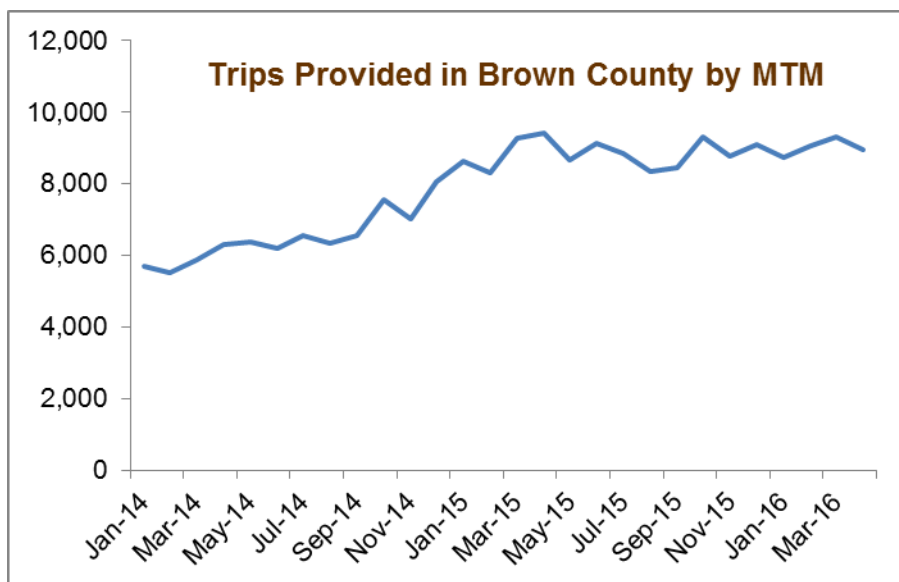
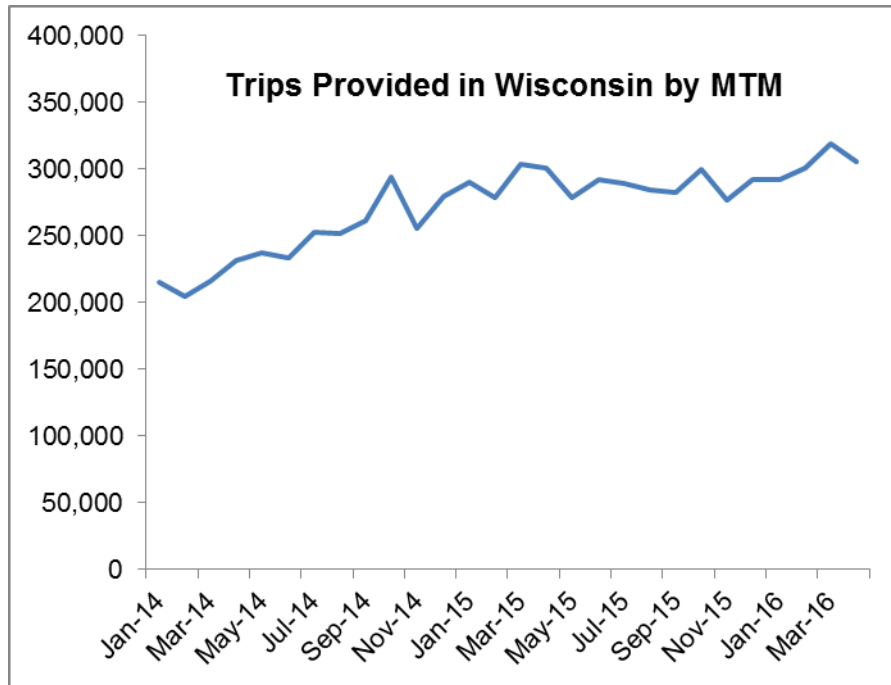
Transportation is arranged through Medical Transportation Management (MTM) Inc., Wisconsin's non-emergency medical transportation manager. MTM may offer mileage reimbursement, a public transportation (bus) fare, or hire a private-for-profit transportation company to provide the service. Vehicles that can accommodate mobility devices are available to those who need them. The service is considered shared ride meaning an individual may share a ride with someone else who may have the same general origin and/or destination.

DHS defines the service as "last resort". Therefore, if a neighbor, friend, or relative can provide a ride to the appointment, the individual is not eligible to receive this service.

DHS publishes data such as program enrollment, number of trips provided, substantiated complaints, and reservation line hold and response times.

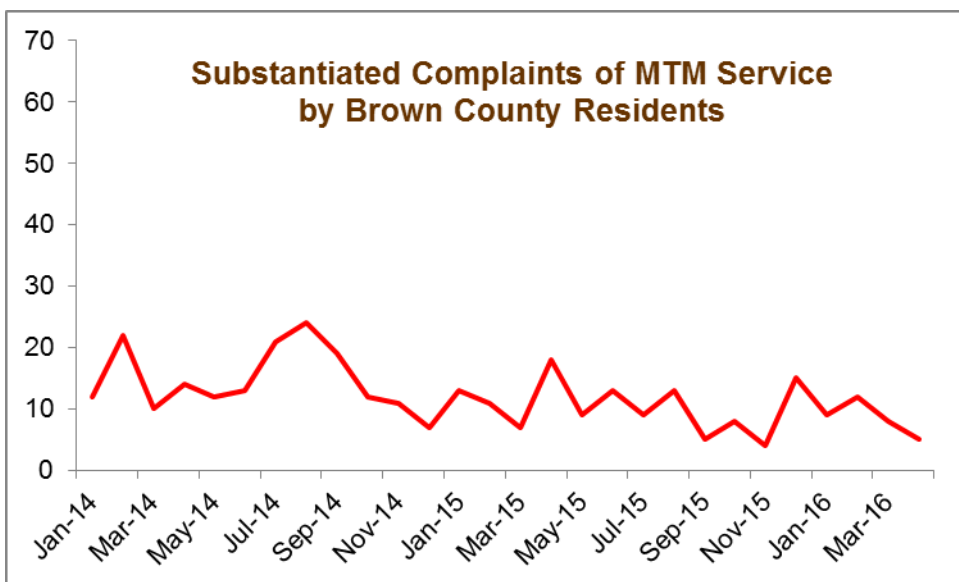
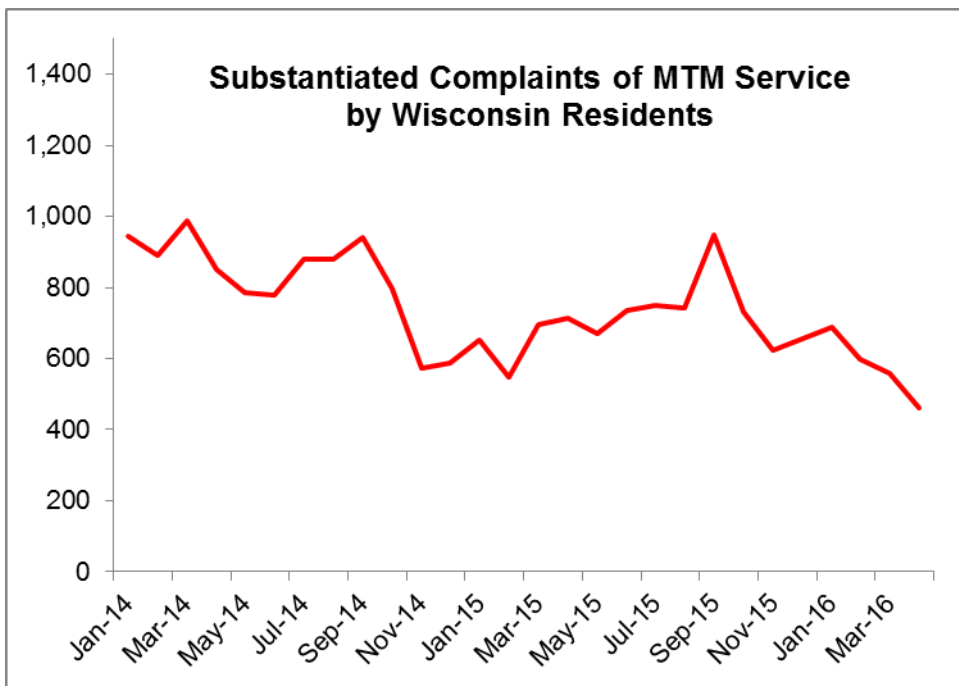
The line graphs below illustrate that MTM has increased the number of trips provided to both Wisconsin and Brown County members since January 2014, shortly after taking over the program from LogistiCare.

**Wisconsin Department of Health Services
MTM Non-Emergency Medical Transportation (NEMT) Services
Trips Provided by Month**



The following line graphs illustrate that MTM has decreased the number of substantiated complaints from both Wisconsin and Brown County members since January 2014. Brown County has experienced an average of nine complaints per month in the most recent 12 months of data that has been made available.

**Wisconsin Department of Health Services
MTM Non-Emergency Medical Transportation (NEMT) Services
Substantiated Complaints by Month**



The following data was provided by MTM in the spring of 2016.

Brown County Profile

Item	Number/%
Population Estimate for Brown County in 2015	258,718
Number of eligible persons living in Brown County in 2016	75,622
Percent of Brown County population eligible for service in 2016	29%
Number of clients living in Brown County making at least one trip in 2015	1,130
Percent of clients living in Brown County making at least one trip in 2015	1.5%
Number of trips with an origin in Brown County in 2015	58,450
Number of public and/or private operators under contract with MTM serving Brown County in 2015	12

3. Aging and Disability Resource Center (ADRC) of Brown County

The Aging and Disability Resource Center (ADRC) of Brown County provides advocacy and support services to Brown County's seniors and individuals with disabilities, and transportation is one of these services. The ADRC receives a Specialized Transportation Assistance Program for Counties (State Section 85.21) award each year. Section 85.21 provides counties with financial assistance to provide transportation to seniors and individuals with disabilities. In 2016, the ADRC used Section 85.21 funds to offset the cost of transportation services provided in Brown County as shown in the following table.

2016 Allocation of Section 85.21 Funds

	Curative Connections Transportation Services	Access & Expansion Project	Brown County Human Services Department Van Driver	Rural Driver Escort	Salvation Army	Oneida Tribe Elder Services	Totals
85.21 Funds	\$434,090	\$44,185	\$30,533	\$11,402	\$8,250	\$5,000	\$533,460
County Funds	\$86,818	\$8,837	\$6,106	\$3,081	\$1,650	\$1,000	\$107,492
Passenger Fares	\$200,339	\$0	\$0	\$4,000	\$3,000	\$0	\$207,339
Other	\$10,000	\$0	\$0	\$0	\$12,844	\$0	\$22,844
Total Expenses	\$731,247	\$53,022	\$36,639	\$18,483	\$25,744	\$6,000	\$871,135

* Allocation based on a 2016 state estimate of 52,059 individuals who are age 65+ & those under 65 with a disability.

4. Curative Connections (operating the transportation program formerly provided by Red Cross)

Curative Connections provides specialized transportation service to individuals over 60 years of age and individuals with disabilities in Brown County, primarily serving the metropolitan Green Bay area.

The program offers a door-to-door service and provides rides for medical, nutrition, employment, education, and social trips. Transportation is provided in automobiles, accessible mini-vans, and accessible buses. Examples of vehicles are shown:

Curative Connection Vehicles



Curative Connections has a fleet of 26 vehicles, and all of the accessible mini-vans and buses have been purchased with 80% funding from the federal Section 5310 Enhanced Mobility for Seniors and Individuals with Disabilities Program. Funding for the operation of this program comes from the ADRC of Brown County (through the 85.21 program), client fares, and donations. The program is supported with 85 volunteer drivers as well as three full-time and one part-time paid office staff members. The program also employs four full-time and five part-time drivers.

Service is provided Monday through Friday from 8:00 a.m. to 4:30 p.m. The cost is \$3.00 per person for a one-way trip and \$14.00 per person for a one-way agency trip.

Red Cross/Curative Connections Ridership

Year	Trips	Percent Change
2001	52,407	
2002	55,824	6.5%
2003	59,426	6.5%
2004	62,812	5.7%
2005	62,087	-1.2%
2006	64,990	4.7%
2007	66,635	2.5%
2008	67,827	1.8%
2009	61,620	-9.2%
2010	62,803	1.9%
2011	66,531	5.9%
2012	70,317	5.7%
2013	63,902	-9.1%
2014	57,325	-10.3%
2015	52,524	-8.4%

Pulaski - Green Bay Area

The Pulaski Adult Activity Center, in conjunction with the Red Cross and Curative Connections, has been providing transportation services to citizens of Pulaski since 2001. A small bus with wheelchair capabilities is housed at the Pulaski Adult Activity Center and is used to provide an estimated 40 clients with 80 rides per month to various medical, nutritional, and social appointments both within Pulaski and to nearby cities such as Green Bay.

Denmark - Green Bay area

The ADRC of Brown County and Curative Connections have been working collaboratively to offer both in-town and out-of-town service to those who are age 60 and over or have a qualifying disability.

Select Area Schools

Curative Connections provides students with disabilities with transportation to and from job sites during the school year. Schools served include Southwest High School, Preble High School, and Syble Hopp School. Curative Connections provides the vehicle and a volunteer driver.

Area Agencies

Area agencies can request that Curative Connections transport clients/residents on a group outing. Curative Connection staff will attempt to find a registered volunteer willing to drive. This service is based on driver availability.

Long-Term Transportation Goal of Curative Connections

The long-range goal is to increase transportation services to rural residents of Brown County. To fulfill this goal, additional grant funds, United Way support, local donations, and dedicated volunteer drivers will be necessary.

5. Oneida Public Transit

Oneida Public Transit provides demand-response service using small buses. The service area primarily consists of the 65,400 acre Oneida Reservation. However, when necessary, Oneida Transit will transport passengers to medical and other appointments outside of tribal boundaries. Oneida Public Transit is a service provided for the Oneida Community and the general public. Oneida Transit is a recipient of a portion of Brown County's State 85.21 allocation.



6. Oneida Tribe Elder Services

Oneida Tribe Elder Services provides monthly Oneida Transit bus passes to working elders as well as transportation to congregate meal sites, program activities, banking, and shopping.

7. Salvation Army

The Salvation Army provides a limited amount of transportation services for seniors and individuals with disabilities through the use of paid staff and volunteer drivers.

Vehicles are scheduled to stop at a grocery store, bank, pharmacy, post office, and restaurant. Service is available several times per month on both the east and west sides of the Green Bay area.

The Salvation Army is a recipient of a portion of Brown County's State 85.21 allocation.

8. Disabled American Veterans (DAV)

The DAV is a non-profit service organization for veterans. The DAV Green Bay office provides transportation to American veterans traveling to and from Veterans Administration (VA) clinics throughout Wisconsin, including the Milo C. Huempfer Community Based Outpatient Clinic located in Green Bay. The DAV operates its own vehicles and the program is supported by a volunteer transportation coordinator and drivers.

9. Rural Driver Escort

This is a door-to-door volunteer rural driver escort service for seniors and adults with disabilities living in the rural parts of Brown County. Private vehicles owned by volunteer drivers are used to provide this service. Drivers receive mileage reimbursement at the current federal rate.

10. Brown County Human Services Department Van Driver

The service provided is an individualized door-to-door van service for seniors and disabled Brown County consumers. Trips are targeted to facilitate travel to medical, day service, and day treatment settings for Brown County Human Services consumers who are unable to independently use Metro's fixed route system or live outside of the Metro service area.

11. ADRC Access and Expansion Project

The ADRC will collaborate with partners to improve access and/or expand services to older adults and individuals with disabilities in Brown County in one or more of the following ways:

- a) Mobility Manager - purchase expert consultation to develop and set up a system with a goal of our community having its own Mobility Manager
- b) Collaboration with Casa Alba to expand transportation options for the eligible population within the Latina/o community by hiring a Spanish-speaking driver
- c) Volunteer Coordinator dedicated to transportation including increasing volunteers in the rural communities as we learn more about service needs and expansion potential in those communities
- d) Expand service hours i.e. evenings, weekends (this might require some additional paid driver time)
- e) Provide specialized transportation to ensure people with dementia are able to get to and from Memory Cafes

12. Social Network (Friends, Family, & Neighbors)

Seniors and individuals with disabilities often rely on friends, family, and neighbors to meet some or all of their transportation needs.

13. Uber and other Transportation Network Companies (TNCs)

TNC drivers use their own vehicles. Although TNCs are typically less expensive than taxis, this service can still be cost prohibitive for many people.

14. Inventory of Private Transportation Providers in Brown County

A number of private transportation operators provide services in Brown County and are listed below.

Private Transportation Providers in Brown County (2016)

1 Awesome Cab 118 Washington Street Green Bay WI 54301 (920) 639-8687	Arms of Angels 1658 Silhouette Lane De Pere WI 54115 (920)-360-3202	Dynasty Transportation 840 S Jackson Street Green Bay WI 54301 (920) 857-3401	Limo Shuttle 2600 S Ashland Avenue Green Bay WI 54304 (920) 494-3931	Tundra Valley Taxi 1124 State Street Green Bay WI 54304 (920) 713-7433
1st Choice Shuttle/Taxi 2995 Holmgren Way #12 Green Bay WI 54304 (920) 471-6061	Astro Shuttle 2803 Packerland Drive Green Bay WI 54313 (920) 499-9119	Elite Shuttle LLC 2010 Memorial Drive Green Bay WI 54303 (920) 265-8471	NEW Transportation Services 9431 County Road D Forestville WI 54213 (920) 825-7411	Transporter Livery Service 613 Hubbard Street #2 Green Bay WI 54303 (920) 328-3988
A-1 Medi Mobile 2819 University Avenue Green Bay WI 54311 (920) 469-3559	Astro Taxi 2642 Packerland Drive Green Bay WI 54313 (920) 499-9119	First Choice Shuttle 2437 Babcock Road Green Bay WI 54313 (920) 471-6061	Oneida Shuttle Transportation 2170 Airport Drive Green Bay WI 54313 (920) 429-3452	Travel Aide 261 French Street Peshtigo WI 54157 (800) 631-1804
Able Taxi and Tours LLC 1950 Cofrin Drive #9165 Green Bay WI 54302 (920) 265-7760	Bay City Transport Inc 416 Clinton Street Green Bay WI 54303 (920) 432-5555	Green Bay Taxi 1823 Nancy Avenue Green Bay WI 54303 (920) 438-9939	Out and About 1627 Murphy Drive Green Bay WI 54303 (920) 366-4030	Yellow Cab of Brown County 1701 Morrow Street Green Bay WI 54302 (920) 435-1111
Ace Yellow/Ace 1217 S Maple Avenue Green Bay WI 54304 435-1111/435-1100	Comfort Travel 1029 Sunset Beach Rd Suamico WI 54173 (920) 490-7667	It's Your Taxi & Shuttle 1818 Beech Tree Dr Green Bay WI 54304 (920) 373-5222	S & B Shuttle Ltd 2870 Ramada Way Green Bay WI 54304 (920) 819-4673	Yellow Cab/Checker Yellow 1212 S Maple Avenue Green Bay WI 54304 (920) 435-8444/435-6985
American Shuttle 800 Cedar Street Green Bay WI 54301 (920) 713-4521	DW Shuttle 106 Oakton Lane Green Bay WI 54311 (920) 713-4959	Lamers 2937 Monroe Road De Pere WI 54115 (920) 336-7220	Taxi Green Bay WI 221 Huth Street #103 Green Bay WI 54302 (920) 204-7082	Wheelchair Transportation 1269 Langlade Avenue Green Bay WI 54304 (920) 494-3333

Brown County Rural Specialized Transportation Needs Study, by the Brown County Planning Commission, 2016

Study Overview

To identify unmet needs for specialized transportation service in the county's rural area, the Brown County Planning Commission (BCPC) prepared a report entitled *Brown County Rural Specialized Transportation Needs Study* in 2016. The study included:

- Creation of an advisory committee to guide staff
- Review of existing transportation resources
- Data collection and mapping
- Stakeholder interviews and other outreach efforts
- Analysis of the information obtained, including identification of service gaps
- Identification of where needs currently exist and where needs are expected to exist in the future
- Recommendations

Study Recommendations

- Establish a mobility manager position designated to serve as a lead for coordination efforts, service outreach, identifying financial and other resources, and building partnerships among local municipalities, service providers, governmental agencies, and customers.
- Expand the Curative Connections transportation program to areas just outside current service areas and examine fare increases for longer trips. Targeted expansion areas (shown in green on the map on the following page) include:
 - Southern parts of the City of De Pere (east and west sides)
 - Southern part of the Village of Suamico
 - Northern and Central Village of Hobart and Oneida
 - Southwestern part of the Town of Scott
- Expand the Curative Connections transportation program by implementing routes (shown in red on the map on the following page) that provide service once or twice a week to:
 - Northern Suamico and Pittsfield
 - Wrightstown and Greenleaf
 - Eastern Bay Shore and Dyckesville

Expansion of service through Curative Connections in the areas noted would potentially free up resources for the rural driver escort program to serve additional rural clients.

Establishing a Mobility Management Program in Brown County

What is Mobility Management?

As defined in FTA Circular 9070.1: "Mobility Management: Consists of short-range planning and management activities and projects for improving coordination among public transportation and other transportation service providers carried out by a recipient or subrecipient through an agreement entered into with a person, including a government entity, under 49 U.S.C. Chapter 53 (other than Section 5309). Mobility management does not include operating public transportation services."

Mobility management is intended to build coordination among existing public transportation providers and other transportation service providers with the result of expanding the availability of service. Mobility management activities may include:

- The promotion, enhancement, and facilitation of access to transportation services, including the integration and coordination of services for individuals with disabilities, seniors, and low-income individuals;
- Support for short term management activities to plan and implement coordinated services;
- The support of state and local coordination policy bodies and councils;
- The operation of transportation brokerages to coordinate providers, funding agencies and customers;
- The provision of coordination services, including employer-oriented Transportation Management Organizations' and Human Service Organizations' customer-oriented travel navigator systems and neighborhood travel coordination activities such as coordinating individualized travel training and trip planning activities for customers;
- The development and operation of one-stop transportation traveler call centers to coordinate transportation information on all travel modes and to manage eligibility requirements and arrangements for customers among supporting programs; and
- Operational planning for the acquisition of intelligent transportation technologies to help plan and operate coordinated systems inclusive of Geographic Information Systems (GIS) mapping, Global Positioning System Technology, coordinated vehicle scheduling, dispatching and monitoring technologies as well as technologies to track costs and billing in a coordinated system and single smart customer payment systems.

Mobility management activities are eligible for Section 5310 Program funding as a capital expense.

Green Bay Metro to Establish a Mobility Management Program Serving Brown County

The Brown County Planning Commission, Green Bay Metro, ADRC of Brown County, & the Brown County TCC have been working together for a number of years to bring a full-scale mobility management program to the general public, particularly low-income individuals, seniors, and persons with disabilities living in urban and rural Brown County.

It is anticipated that a mobility manager will be hired in late 2016.

Funding

It is anticipated that that federal Section 5310 and state 85.21 (via the Aging and Disability Resource Center of Brown County) funds will cover the cost of the program.

Chapter 4 – Action Plan

Process

The 2016 Action Plan was developed by county meeting participants with assistance from Brown County Planning Commission/MPO staff. County meeting participants were asked to identify:

- needs and gaps in transportation services
- possible solutions to the needs and gaps
- persons or entities responsible for addressing needs and gaps
- a timeline for implementation
- roadblocks to implementation

Action Plan

Issue/Action	Responsible Party	Timeline	Roadblock to Implementation
<p>Continue holding quarterly meetings of the Brown County Transportation Coordinating Committee (TCC).</p>	<p>Brown County Planning Commission/MPO & the Aging & Disability Resource Center of Brown County</p>	<p><u>The formation of the TCC:</u> The TCC was established by the Brown County Board of Supervisors in 2008.</p> <p><u>The function of the TCC:</u> TCC members collaborate & share information on available services, assist in resolving client/provider issues, & provide advocacy on behalf of seniors & individuals with disabilities who require specialized transportation services. The TCC also reviews & approves the ADRC's annual 85.21 applications & reviews & recommends approval of projects through the Section 5310 Enhanced Mobility of Seniors & Individuals with Disabilities Program.</p>	<p>None.</p>

Issue/Action	Responsible Party	Timeline	Roadblock to Implementation
<p>Transportation as a Need* – The Aging & Disability Resource Center (ADRC) of Brown County’s <i>Plan on Aging</i> cites transportation as a need that should be addressed. Transportation is mentioned at every listening session, planning event, & survey conducted by the ADRC staff, including at the heavily attended AGE Wave workshop held in 2015 in partnership with the UW-Extension.</p> <p>Existing specialized transportation services are complex. Although there are many options & resources available in the community, a needs assessment is warranted.</p> <p><small>*Source: ADRC of Brown County - County Plan on Aging 2016-2018 http://www.co.brown.wi.us/if/2016-2018-County-Aging-Unit-Plan-Brown-Web(1).pdf</small></p>	<p>The ADRC provided funding for a comprehensive transportation evaluation by Brown County Planning Commission (BCPC) staff.</p> <p><u>Study Description:</u> To identify unmet needs for specialized transportation service in the county’s rural area, the BCPC has developed a Rural Specialized Transportation Needs Study.</p> <p>The study process included:</p> <ul style="list-style-type: none"> • Data collection & mapping. • Stakeholder interviews. • Public outreach meetings. • Analysis of the information obtained from the data collection efforts, stakeholder interviews, & public outreach meetings. • Development of a report that identifies where needs currently exist for rural specialized transportation service & where these needs are expected to exist in the future. 	<p>This plan was completed in 2016.</p>	<p>With the plan completed, it will be necessary to obtain funding for staff, capital, & programs if recommendations are to be implemented.</p>

Issue/Action	Responsible Party	Timeline	Roadblock to Implementation
<p>The Green Bay area & Brown County could benefit from an expanded Mobility Manager function.</p>	<p>Currently the Job Center of Wisconsin (office located in Green Bay) employs a Mobility Manager. Emphasis is placed on employment-related transportation.</p> <p>Green Bay Metro is in the process of establishing a full-scale specialized transportation mobility management program that serves all of Brown County.</p>	<p><u>Ongoing.</u> Brown County Planning Commission, Green Bay Metro, ADRC of Brown County, & the TCC have been working together for a number of years to bring a full-scale mobility management program to the general public, particularly low-income individuals, seniors, & persons with disabilities living in urban & rural Brown County.</p> <p>It is anticipated that a mobility manager will be hired in late 2016.</p>	<p>With a combination of funding sources identified to cover the cost of staff, the next step will be to secure funds for additional services.</p>
<p>Mobility Management training & assistance.</p>	<p>Low or no-cost assistance is available through the Wisconsin Association of Mobility Managers, National Center for Mobility Management (NCMM), & other organizations. Services include mobility management training & certification as well as technical assistance in the development of programs. Assistance is also available to help build awareness among local decision-makers, service providers, & consumers.</p>	<p>It is expected that the mobility manager scheduled to begin in late 2016 will take full advantage of the opportunities.</p>	<p>Implementation to begin in late 2016.</p>

Issue/Action	Responsible Party	Timeline	Roadblock to Implementation
<p>Delay or prevent the need for specialized transportation services through travel training.</p>	<p>Human service agencies & Green Bay Metro</p>	<p><u>Ongoing</u>. Green Bay Metro offers one-on-one bus boarding & alighting training for individuals using mobility devices. However, increase in demand for training has created strain on existing staff time.</p> <p><u>New in 2016</u>. Green Bay Metro has produced a number of short “how to” videos to aid newcomers. They include:</p> <ul style="list-style-type: none"> • how to read a bus schedule • how to use the farebox • how to navigate accessible bus features <p>The videos are available at: www.greenbaymetro.org</p> <p><u>Scheduled for 2017</u>. As stated above, Brown County Planning Commission, Green Bay Metro, & Brown County ADRC, will bring a full-scale mobility management program to Brown County in late 2016. In 2017, a full-time travel trainer is proposed.</p>	<p>Travel Trainer position scheduled to be filled in 2017.</p>

Issue/Action	Responsible Party	Timeline	Roadblock to Implementation
<p>Funding: To enhance public transportation service for existing bus riders & make Metro a viable option for non-riders, Metro will have to raise & sustain additional money in the future. Current federal, state, & local funding sources for both operating & capital will not likely increase over the next several years.</p> <p>Increase in the backlog of unmet capital needs for public transit systems, particularly buses, will continue to be an issue. As of 2016, 39% of Green Bay Metro buses have exceeded useful life as defined by the Federal Transit Administration (FTA).</p> <p>Continue to study the possibility of creating a Regional Transportation Authority (RTA) in the Green Bay area, Brown County, or region.</p>	<p>Green Bay Transit Commission, Green Bay Metro staff, Brown County Planning Commission/MPO, the State of Wisconsin, & the federal government.</p>	<p><u>Ongoing.</u> BCPC/MPO & Metro staffs continue to monitor/study the impact of recent changes in federal & state funding levels. Staff continues to monitor state RTA enabling legislation proposals.</p>	<p>Federal Transportation law limits the amount of funding large urban areas can receive for public bus & paratransit services. The Green Bay Urbanized Area reached 200,000+ population in the 2010 Census, prompting a decrease in overall federal transit aids used to operate service in Green Bay, De Pere, Allouez, Ashwaubenon, & Bellevue.</p> <p>Federal funds for capital purchases such as buses were cut dramatically with MAP-21. Available funds will increase under the new FAST Act but not to pre-MAP-21 levels.</p> <p>State of Wisconsin enabling legislation must be approved before locals can seek public approval of an RTA.</p> <p>State Legislature eliminated many of the previously-approved RTAs & voted down others.</p>

Issue/Action	Responsible Party	Timeline	Roadblock to Implementation
<p>Current transportation revenue is insufficient to meet needs. The federal gas tax was last raised in 1993 & the state gas tax was last raised in 2006. Neither has been indexed to inflation.</p> <p>Policy analysts believe that an increased tax is needed to fund & sustain transportation infrastructure & programs.</p> <p>The issue has been studied, reports have been issued, & recommendations have been put forth. However, little progress has been made toward a establishing a long-term funding solution.</p>	<p>State & federal governments.</p>	<p>Wisconsin's Transportation Development Association (TDA) is currently promoting its JUST FIX IT campaign. The campaign encourages the Legislature & Governor to develop a long-term sustainable solution to fund Wisconsin's transportation systems. Furthermore, TDA supports "a responsible level of bonding & adjusts user fees to adequately & sustainably fund Wisconsin's multi-modal transportation system".</p>	<p>Federal & state legislative bodies have not acted.</p>

Issue/Action	Responsible Party	Timeline	Roadblock to Implementation
<p>Explore additional funding programs/opportunities, including the Federal Section 5310 Enhanced Mobility of Seniors & Individuals with Disabilities Program & /or other funding such as Rides to Wellness Demonstration & Innovative Coordinated Access & Mobility Grants, & others.</p>	<p>Brown County Planning Commission/MPO staff, Green Bay Metro, & human service agencies.</p>	<p>2016+. Curative Connections has applied & plans to continue to apply for replacement vehicles for use in its transportation program.</p> <p>2016+. Green Bay Metro has applied for funds to enhance transportation services for seniors & individuals with disabilities. This includes accessible bus shelters and partial funding for the Mobility Management Program.</p> <p>2016+. Green Bay Metro is the Designated Recipient (DR) for Section 5310 program. The Green Bay Urbanized Area receives a direct allocation from the Section 5310 program. The Brown County Planning Commission Board of Directors has local approval authority for projects.</p>	<p>Annual allocation is limited to approximately \$161,000.</p>

Issue/Action	Responsible Party	Timeline	Roadblock to Implementation
<p>Service Gaps often exist due to lack of funding & /or vehicle capacity, as a result of institutional barriers, & other reasons. Gaps need to be identified & resolved if possible.</p> <p><u>Gaps:</u> There have been requests for public transportation services to accommodate shift workers, for Sunday & holiday travelers, & to areas currently not serviced by transportation providers. There is also a need for services to be available 24 hours a day, seven days a week, for 365 days a year.</p>	<p>All. Explore public/private partnerships to fill gaps.</p>	<p><u>Beginning in late 2016/early 2017.</u> Newly created Mobility Manager to evaluate existing services & make recommendations for improvement. The Mobility Manger will also identify, prioritize, & introduce new services to address gaps.</p>	<p>A limited number of private providers offer this service, but it is often much more expensive than public transportation options.</p> <p>As stated, with a combination of funding sources identified to cover the cost of staff, the next step will be to secure funds for additional services.</p>
<p>Immediate specialized transportation services are needed (for unforeseen circumstances).</p>	<p>Public & private transportation providers.</p>	<p><u>None.</u> The Green Bay Metro paratransit program policy does not allow for same day trip requests. Federal law allows public transit systems to decline same day requests. Curative Connections will attempt to accommodate a same day request but capacity issues may prohibit such a trip.</p>	<p>Program policy & /or program capacity issues.</p> <p>A limited number of private providers offer this service, but this service can be cost prohibitive for some people.</p>

Issue/Action	Responsible Party	Timeline	Roadblock to Implementation
<p>Non-Emergency Medical Transportation (NEMT) provided by the State of Wisconsin Department of Health Services (DHS) & MTM Transportation to qualifying Medicaid & BadgerCare Plus Members is insufficient & often leaves eligible clients without transportation. Other service quality issues have been documented. Service improvements needed. DHS defines the service as “last resort”, meaning if you can drive or have a family member drive you to & from a medical appointment you are not eligible to receive service.</p>	<p>Wisconsin DHS & private for profit transportation firm, MTM.</p>	<p>MTM began providing service on August 1st, 2013, after the previous provider, LogistiCare, issued a letter of intent to cease service.</p> <p>The Wisconsin State Legislature’s Legislative Audit Bureau conducted an audit & released a report in 2015 which identified issues with the program. DHS has ensured the transportation community that improvements are being made.</p> <p>MTM’s service is being monitored by representatives of the Brown County TCC & other committees & organizations.</p> <p>Advocacy groups have suggested a regional model may offer improved service.</p> <p>The true cost for missed routine/preventative/follow-up medical appointments when transportation services cannot be provided should be calculated.</p>	<p>Wisconsin Legislature approved current brokerage system structure in an effort to save money.</p>

Issue/Action	Responsible Party	Timeline	Roadblock to Implementation
<p>NEMT is difficult & costly to obtain for nursing home clients traveling to & from medical appointments & for hospital discharge. Federal reimbursement rates for qualifying individuals are approximately \$10.00 per day which is low compared to the actual cost of providing transportation at approximately \$25.00 to \$100.00+ per trip. In many cases, the nursing home pays for the balance.</p>	Unknown.	<p><u>2013+</u>. The Brown County TCC has been studying the issue. A solution has not been identified, but the TCC will continue to address this issue in cooperation with representatives of area nursing homes.</p>	<p>Federal, State, & local funding constraints.</p> <p>Reimbursement rates are typically well below actual expenses.</p>
<p>Bilingual Services The ADRC has received feedback from the Casa ALBA Melanie Hispanic Resource Center¹. There is a need for a Spanish speaking driver to provide service for Hispanic elders who do not speak English and who are not comfortable navigating transportation services to the center or other locations.</p>	Unknown	Undetermined.	Federal, State, & local funding constraints.

¹ Casa ALBA Melanie Hispanic Resource Center. The center serves as a hub for information and referral, bringing together persons seeking assistance with service providers in the community. Since opening its doors in February, 2012, Casa ALBA Melanie has been well received in the community, and experiences continuous growth and involvement.

Issue/Action	Responsible Party	Timeline	Roadblock to Implementation
<p>Green Bay Metro currently offers paratransit services under contract with a private-for-profit transportation company, MV. Metro should incrementally transition this service to an in-house operation.</p>	<p>Green Bay Transit Commission with support from Green Bay Metro & Brown County Planning Commission/MPO staffs.</p>	<p>The BCPC & Green Bay MPO have included this concept in plans & programs for many years. This concept has been endorsed by the Green Bay Transit Commission.</p>	<p>Lack of funding to hire additional staff, purchase technology, & acquire accessible vans & /or small buses. Upfront investment needed to ensure long-term savings.</p>
<p>New capabilities & opportunities are being created in both the transportation & human service communities through use of technology.</p> <p>Explore the increased use of technology.</p>	<p>Green Bay Metro, human service agencies, & Brown County Planning Commission/MPO</p>	<p><u>Ongoing</u>. Technology continues to be purchased, creating efficiencies for existing programs & creating new digital applications, such as “Where’s my Bus?”</p> <p>Additional technology is included in Metro’s Capital Improvement Program, but it is not currently funded.</p> <p>Green Bay Metro to introduce a new wheelchair & occupant securement system called Q’Straint by Quantum on buses. Increased safety, independence for the user, & operational improvements due to load-time reductions have been realized by transit systems using this technology.</p>	<p>Lack of funding is often the primary roadblock to expanding the use of technology.</p>
<p>Impact that on-demand service Transportation Network Companies (TNCs)* such as Uber, Lyft, Sidecar, Wingz, Taxify, Haxi & others may have on transportation services.</p> <p>* TNCs link passengers with drivers who use their own vehicles. An online application (possibly via smart phone) is used by the passenger to request a ride. Several TNCs link wheelchair accessible vehicles to individuals needing them.</p>	<p>None.</p>	<p><u>Ongoing</u>. With the recent introduction of TNC services in Brown County, identify possible opportunities & /or partnerships.</p>	<p>N/A</p>

Issue/Action	Responsible Party	Timeline	Roadblock to Implementation
<p>The impact of driverless or autonomous cars will likely enhance mobility for all, including seniors and persons with disabilities.</p>	<p>None identified.</p>	<p><u>Ongoing</u>. Driverless cars have become legal and have been introduced in several states. Wisconsin is not currently one of them.</p>	<p>Local, State, and or Federal laws may govern where and when the vehicles are allowed to operate.</p>
<p>A report entitled <i>An Update & Recommendations by Bay Area Community Council - Poverty in Brown County Progress Report 2015</i> states that many seniors & persons with disabilities cannot afford specialized transportation. This issue is magnified in rural areas that do not have access to Curative Connections or Green Bay Metro. The report identifies several barriers:</p> <ol style="list-style-type: none"> 1. Affordability 2. Lack of access to services in rural areas 3. Service gaps in urban areas 4. Transportation to work 5. Employment hours 6. Prioritization of trip purposes (by some programs) <p><small>Source: Bay Area Community Council report at: http://www.bayareacommunitycouncil.org/media/75555/poverty%20in%20brown%20county%202015.pdf</small></p>	<p>Newly created Mobility Manager to address service issues identified in study.</p>	<p>Ongoing.</p>	<p><u>Funding</u>. As stated, with a combination of funding sources identified to cover the cost the mobility manager position, the next step will be to secure funds for additional services.</p>
<p>The BCCS study noted in its 2009 assessment that the area could benefit from Shared-Ride Taxi services.</p>	<p>Unknown.</p>	<p>None defined.</p>	<p>Funding. Entity to provide the service.</p>

Issue/Action	Responsible Party	Timeline	Roadblock to Implementation
<p><i>Collaborative Community Report</i> - Year End 2014 published by Brown County United Way 2-1-1, Family Services Crisis Center, & ADRC of Brown County cite significant requests for information, referrals, & unmet needs. The report identifies gaps in transportation services as one of the top 10 unmet needs for low income people. <u>Concerns:</u></p> <ul style="list-style-type: none"> • Limited public transit routes - especially outside of the urban center • Limited affordable transportation to support second & third shift employment • Complex & challenging non-emergency medical transportation for those on Medicaid • Growing population & growing needs of older adults • Large gap in rural transportation including Howard & Suamico <p><u>Opportunities</u> to explore include:</p> <ul style="list-style-type: none"> • Improving non-emergency medical transportation for Medicaid participants following the state audit. • Coordinating available funds & programs through the local Transportation Coordinating Committee • Exploring the possibilities of adding mobility managers • Continuing to expand the reach of public transit via local municipalities • Developing public/private transportation partnerships to expand employment related opportunities. <p>Source: http://www.co.brown.wi.us/i/f/aging__disability_resource_center/2014%20ADRC%20Crisis%202011%20Report%20Final.pdf</p>	<p>With similar issues identified in the Collaborative Community Report & the BCCS study, the newly created Mobility Manager to address concerns & opportunities.</p>	<p>Ongoing.</p>	<p><u>Funding.</u> As stated, with a combination of funding sources identified to cover the cost the mobility manager position, the next step will be to secure funds for additional services.</p>

Issue/Action	Responsible Party	Timeline	Roadblock to Implementation
<p>Engineering. Physical barriers, such as lack of sidewalks & curb cuts, restrict access to transportation services.</p>	<p>Brown County municipalities, Brown County Department of Public Works, State of Wisconsin, & private developers.</p>	<p><u>Ongoing.</u> The need for improved land use decisions & transportation design policies are addressed in many local comprehensive plans, the Transit Development Plan, the Green Bay MPO's Long-Range Transportation Plan, & other planning documents.</p> <p>In 2012, Green Bay Metro improved access to bus route & bus stop information through the implementation of the "Where's My Bus?" application. This application allows passengers to retrieve real-time data regarding the arrival time of their bus via the internet. Passengers can send an email (via a computer or smart phone with internet access) with their bus stop number in the subject line & within a minute receive a response. This tool allows passengers to better time their arrival at their stop & minimizes waiting in inclement weather.</p> <p>In 2014, BCPC issued the Green Bay Metro Comprehensive Bus Stop Study. The study offers recommendations for improved bus stop accommodations.</p>	<p>Local/county/state policies & funding.</p>
<p>Educate local, state, & federal elected officials (policy makers) & the general public of the need for specialized transportation services. The need for specialized transportation services will increase as Brown County's population ages. Also develop an advocacy strategy.</p>	<p>Brown County TCC, Brown County Planning Commission/Green Bay MPO, Green Bay Metro, & other committees & organizations.</p>	<p><u>Ongoing.</u> Brown County TCC membership includes an elected official & members of various advocacy groups.</p> <p><u>Ongoing.</u> BCPC staff serves on the NE Wisconsin Regional Access to Transportation Committee (NEWRATC). Funding & advocacy are key components of the committee's work.</p> <p><u>Ongoing.</u> BC Homeless & Housing Coalition, Bay Area Community Council, Job Center of Wisconsin/Mobility Manager, United Way, JOSHUA, ESTHER, & many others have brought the issue forward.</p>	<p>To be determined.</p>

Issue/Action	Responsible Party	Timeline	Roadblock to Implementation
<p>Engage seniors, individuals with disabilities, low-income individuals, & agency staff who represent them in the development of transportation plans & policies.</p>	<p>Brown County Transportation Coordinating Committee, Brown County Planning Commission/MPO, Green Bay Metro, human services agencies & advocates.</p>	<p><u>Ongoing</u>. The Brown County TCC's membership includes advocates for seniors, individuals with disabilities, & low income individuals. Many local organizations routinely conduct listening sessions, surveys, & publish results & recommendations.</p>	<p>None.</p>

Chapter 5 - Program of Projects

2017-2021 Program of Projects

The FAST Act requires the county *Coordinated Public Transit-Human Services Transportation Plan* to identify an approved program of projects prior to the distribution of funds from the federal Section 5310 Enhanced Mobility of Seniors and Individuals with Disabilities Program.

The following table summarizes the approved 2017-2021 program of projects for Brown County. The program of projects was unanimously approved by the participants in the September 27, 2016, *Coordinated Public Transit-Human Services Transportation Plan* meeting.

**FY 2017-2021
Program of Projects for Brown County
Projects Pending Approval**

Program	FY 2017 Projects	FY 2018 Projects	FY 2019 Projects	FY 2020 Projects	FY 2021 Projects
Section 5310	<u>Curative Connections</u> Vehicles for use in the Brown County Specialized Transportation Program.				
Section 5310	<u>Green Bay Metro</u> Brown County Mobility Management Program. Mobility Coordinator, Travel Trainer, and related programming.				
Section 5310	<u>Green Bay Metro</u> Per Section 5310, as the designated recipient, Green Bay Metro, will be assigned 10% of program funds for administration costs each year.				
Section 5310	<u>Green Bay Metro & others</u> Grouped Projects – To Be Determined. Project(s) must be derived from the coordinated plan. Projects may include capital and/or operating and can include accessible bus shelters and specialized vehicles for transportation for seniors and individuals with disabilities.				

Section 5310 - Enhanced Mobility for Seniors and Individuals with Disabilities capital projects can be funded at 80% federal and 20% local. Operating projects can be funded with a 50% split.

The county meeting participants approved proceeding with the 2017-2021 Program of Projects at the September 27, 2016, meeting.

Chapter 6 – Conclusion

Conclusion

The working group met on September 27, 2016, identified issues of concern, and developed an action plan. The working group also approved the program of projects contained in this report.

Appendices

**Appendix A
Brown County Meeting –
Letter of Invitation to Participate**

PLANNING COMMISSION



305 E. WALNUT STREET, ROOM 320
P.O. BOX 23600
GREEN BAY, WISCONSIN 54305-3600
PHONE (920) 448-6480 FAX (920) 448-4487
WEB SITE www.co.brown.wi.us/planning

CHUCK LAMINE, AICP
PLANNING DIRECTOR

September 9, 2016

Dear Invitee:

Federal transportation law requires projects falling under the Section 5310 Enhanced Mobility of Seniors and Persons with Disabilities Program to meet certain requirements in order to receive funding.

One of the requirements is that Section 5310 projects be part of a locally developed coordinated public transit - human services transportation plan. This plan is required to be developed through a process that includes representatives of public and private transportation providers and the general public.

The Wisconsin Department of Transportation developed a county meeting process to comply with the requirements. In the case of Brown County, the Metropolitan Planning Organization (MPO) planners were chosen to coordinate and conduct the meeting because they are currently responsible for reviewing federal and state program applications, need to be aware and knowledgeable of transit programs and funding streams in each county, and are an independent and objective entity.

The meeting for Brown County's plan is scheduled for:

**9:15 a.m.
Tuesday, September 27, 2016
Green Bay Metro Transportation Center Commission Room
901 University Avenue
Green Bay, Wisconsin**

You are being asked to participate in the meeting because you represent one or more of the following entities:

- Local consumers of specialized transportation services (seniors and persons with disabilities)
- Local transportation providers
- Local nursing home representatives
- Local assisted living care facilities representatives
- Local major employers
- General public

In addition to identifying the program of projects that will appear in the plan, the meeting will include completing an assessment of human services transportation issues and developing an action plan.

Please respond to this meeting invitation by Wednesday, September 21 by calling Lisa J. Conard at (920) 448-6489 or by email at conard_lj@co.brown.wi.us if you plan to attend. I look forward to seeing you on **September 27**.

Sincerely,

Lisa J. Conard
Senior Planner

Appendix B

Brown County Meeting - List of Invitees and Worksheet to Document County Meeting Invitations

	Name	Agency	Representing
1	Adam Gauthier	BCPC Board of Directors	BCPC Board of Directors
2	Adam Moore	Neighborhood Association	Neighborhood Association
3	Alan Walts	US Environmental Protection Agency - Region 5	Environmental Resource Agency
4	Alex Zacharias	3NProduction	Local Business
5	Alice Halpin	Wisconsin DATCP	Environmental Resource Agency
6	Ann Hartman	Neighborhood Association	Neighborhood Association
7	Barb Natelle	Syble Hopp School	BC Transportation Coordinating Committee
8	Barbara Kuehn Schumacher	Fort Howard Apartments - Seniors & Low-Income	Local Resource Agency
9	Bernie Erickson	BCPC Board of Directors	BCPC Board of Directors
10	Beth Nadolski Spears	Neighborhood Association	Neighborhood Association
11	Bill Balke	Village of Bellevue	BCPC Transportation Subcommittee
12	Bill Wheeler	Federal Transit Administration	Federal Transit Administration
13	Bob Heroux	Neighborhood Association	Neighborhood Association
14	Bobbie Lison	Catholic Charities	Local Resource Agency - Budget Counseling Program
15	Brandon Cooper	Oneida Public Transit System	Oneida Tribe of Indians - TCC
16	Brandon Robinson	Bay Lake Regional Planning Commission	BCPC Transportation Subcommittee
17	Bree Decker	The Salvation Army	Local Resource Agency - Transitional Housing
18	Brett Knoespel	Neighborhood Association	Neighborhood Association
19	Brian Brock	BCPC Board of Directors	BCPC Board of Directors
20	Brown County Central Library	Brown County Central Library	Brown County Central Library
21	Brown County Clerk	Brown County Clerk	Brown County
22	Carolyn MacKenna	Neighborhood Association	Neighborhood Association
23	Carolyn Stoviak	Neighborhood Association	Neighborhood Association
24	Casey M Fryda	Northeast WI Technical College	Local Educational Institution
25	Cathy Putman	Brown County Homeless & Housing Coalition	Local Resource Agency
26	City Clerk	City of De Pere	City of De Pere
27	City Clerk	City of Green Bay	City of Green Bay
28	Cole Runge	Brown County Planning Commission	BCPC/MPO Staff
29	Corina Burke	Oneida Nation Tribal Office	Oneida Tribe of Indians - Administration
30	Corina Williams	Tribal Historic Preservation/Oneida Tribe of Indians	Environmental Resource Agency
31	Corrie Campbell	Brown County Board of Supervisors	BC Transportation Coordinating Committee
32	Craig Berndt	Village of Allouez	BCPC Transportation Subcommittee
33	Craig Runnoe	Neighborhood Association	Neighborhood Association
34	Dale Tease	Neighborhood Association	Neighborhood Association
35	Dan Drewery	Village of Suamico	BCPC Transportation Subcommittee
36	Dan Theno	Neighborhood Association	Neighborhood Association
37	Dave Bieda	Neighborhood Association	Neighborhood Association
38	Dave Wiese	BCPC Board of Directors	BCPC Board of Directors
39	David Blackman	Neighborhood Association	Neighborhood Association
40	David Hintz	Neighborhood Association	Neighborhood Association
41	David Johnson	Wisconsin Bureau of Aeronautics	Environmental Resource Agency
42	Dean Haen	Brown County Port & Resource Recovery	Port of Green Bay
43	Debbie Schumacher	BCPC Board of Directors	BCPC Board of Directors
44	Debra Tilot	Neighborhood Association	Neighborhood Association
45	Denise Misovec	Curative Connections	BC Transportation Coordinating Committee
46	Derek Weyer	WisDOT	WisDOT staff - Northeast Region
47	Devon Christianson	Brown County Aging & Disability Resource Center	BC Transportation Coordinating Committee
48	Diana Brown	Curative Connections	BC Transportation Coordinating Committee

49	Diane Matthews	Neighborhood Association	Neighborhood Association
50	Dick Marbes	Disabled American Veterans	Local Resource Agency - Disabled American Veterans
51	Dick Pigeon	Neighborhood Association	Neighborhood Association
52	Dotty Juengst	BCPC Board of Directors	BCPC Board of Directors
53	Doug Martin	Village of Ashwaubenon	BCPC Transportation Subcommittee
54	Doug Schneider	Green Bay Press-Gazette	Media
55	Dwight McComb	Federal Highway Administration	Environmental Resource Agency
56	Ed Kazik	Village of Hobart	BCPC Transportation Subcommittee
57	Emily Jacobson	Neighborhood Association	Neighborhood Association
58	Emily Ysebaert	Green Bay Transit Commission	Green Bay Transit Commission
59	Eric Rakers	City of De Pere	BCPC Transportation Subcommittee
60	Eric Sponholtz	Volunteer Center	Local Resource Agency
61	Essie Fels	Green Bay Metro	Green Bay Metro - Paratransit Program
62	Florence Petri	Oneida Nation Elderly Services	Local Resource Agency
63	Frederick Heitl	BCPC Board of Directors	BCPC Board of Directors
64	Geoff Farr	Village of Howard	BCPC Transportation Subcommittee
65	George Raymaker	Neighborhood Association	Neighborhood Association
66	Gerald Polus	Brown County Veterans Office	Local Resource Agency
67	Glenn Spevacek	Neighborhood Association	Neighborhood Association
68	Greg Maloney	Family Care Agency	BC Transportation Coordinating Committee
69	Hans Shin	Bellin Health	Local business or agency w 1,500+ employees
70	James Botz	BCPC Board of Directors	BCPC Board of Directors
71	James Golembeski	Bay Area Workforce Development Board Inc	Local Resource Agency
72	Jane Hansen	Neighborhood Association	Neighborhood Association
73	Jason Ward	BCPC Board of Directors	BCPC Board of Directors
74	Jennifer Van Den Elzen	Live54218	Local Resource Agency - Health
75	Jessica Kempke	US Army Corps of Engineers	Environmental Resource Agency
76	Jim Doperalski	Wisconsin DNR - Northeast Region	Environmental Resource Agency
77	Jim Haskins	Neighborhood Association	Neighborhood Association
78	Jim Jacques	Neighborhood Association	Neighborhood Association
79	Jim Kuehn	WisDOT	WisDOT staff - Central Office
80	Jim Ridderbush	Neighborhood Association	Neighborhood Association
81	Jimmy Clark	WUJZ Radio	Media
82	Joanne Piepenburg	Neighborhood Association	Neighborhood Association
83	Joe Rabideau	Neighborhood Association	Neighborhood Association
84	John Klasen	BCPC Board of Directors	BCPC Board of Directors
85	John Trester	Interested Citizen	Interested party
86	John Withbroe	Green Bay Transit Commission	Green Bay Transit Commission
87	Josh Malcore	Neighborhood Association	Neighborhood Association
88	Joy Glass	Neighborhood Association	Neighborhood Association
89	Joyce Hoes	Oneida Public Transit System	Oneida Tribe of Indians - Transit
90	Julie Arneith	League of Women Voters	League of Women Voters
91	Julie Tetzlaff	Cerebral Palsy	BC Transportation Coordinating Committee
92	Karen Galske	Freedom House Ministries	Local Resource Agency - Shelter
93	Karrie McGuire	Salvation Army	Local Resource Agency
94	Katherine Patterson	WisDOT	WisDOT staff - Central Office
95	Kathleen Janssen	BCPC Board of Directors	BCPC Board of Directors
96	Kathy Jerry	Neighborhood Association	Neighborhood Association
97	Kathy McMurray	Brown County Homeless & Housing Coalition	Local Resource Agency
98	Ker Vang	Brown County Planning Commission	BCPC/MPO Staff
99	Kevin Kuehn	Green Bay Transit Commission	Green Bay Transit Commission
100	Kitty Barry	Options for Independent Living	Local Resource Agency
101	Kitty Kaari	ADRC - Pulaski	Local Resource Agency - Pulaski ADRC
102	Kris Canto	WisDOT	WisDOT staff - Central Office
103	Linda Mamrosh	Brown County TCC Citizen Member	BC Transportation Coordinating Committee
104	Lisa Conard	Brown County Planning Commission	BCPC/MPO Staff
105	Lisa VanDonsel	ADRC Board of Directors	BC Transportation Coordinating Committee

106	Lori Stuckert	Bay Area Community Council	Advocacy - Think Tank
107	Mai Yia Yang	Forward Service Corporation	Local Resource Agency
108	Mallory Cornelius	ASPIRO	BC Transportation Coordinating Committee
109	Manager	1 Awesome Cab	Private Transportation Provider
110	Manager	1st Choice Shuttle/ Taxi	Private Transportation Provider
111	Manager	A & J Mobility	Private Transportation Provider
112	Manager	A-1 Medi Mobile	Private Transportation Provider
113	Manager	Able Taxi and Tours LLC	Private Transportation Provider
114	Manager	Ace Yellow/Checker Yellow/Green Bay Yellow	Private Transportation Provider
115	Manager	American Shuttle	Private Transportation Provider
116	Manager	American Shuttle	Private Transportation Provider
117	Manager	Arms of Angels	Private Transportation Provider
118	Manager	Astro Shuttle/ Taxi Service	Private Transportation Provider
119	Manager	Astro Taxi	Private Transportation Provider
120	Manager	Bay Bus Shuttle LLC	Private Transportation Provider
121	Manager	Bay Bus Shuttle LLC	Private Transportation Provider
122	Manager	Bring It! Errands and Delivery	Private Transportation Provider
123	Manager	Comfort Travel	Private Transportation Provider
124	Manager	DW Shuttle	Private Transportation Provider
125	Manager	DW Shuttle	Private Transportation Provider
126	Manager	Elite Shuttle	Private Transportation Provider
127	Manager	Elite Shuttle/ Taxi	Private Transportation Provider
128	Manager	First Choice Shuttle Service	Private Transportation Provider
129	Manager	First Student	Private Transportation Provider
130	Manager	First Student	Private Transportation Provider
131	Manager	Green Bay Taxi	Private Transportation Provider
132	Manager	House of Hope	Local Resource Agency - Emergency Housing
133	Manager	Kobussen Buses	Private Transportation Provider
134	Manager	Lamers Bus Lines Inc	Private Transportation Provider
135	Manager	Lamers Bus Lines Inc	Private Transportation Provider
136	Manager	Limo Shuttle and Taxi	Private Transportation Provider
137	Manager	Multicultural Center of Greater Green Bay	Local Resource Agency
138	Manager	Packerland Shuttle/ Taxi	Private Transportation Provider
139	Manager	Tundra Valley Taxi	Private Transportation Provider
140	Manager	Volunteer Center	Local Resource Agency
141	Manager	Wheelchair Transport	Private Transportation Provider
142	Manager	Yellow Cab of Brown County	Private Transportation Provider
143	Mark Handeland	BCPC Board of Directors	BCPC Board of Directors
144	Mark Handeland	BCPC Board of Directors	BCPC Board of Directors
145	Marta Mezo	Neighborhood Association	Neighborhood Association
146	Mary Brick	Syble Hopp School	BCPC Transportation Subcommittee
147	Mary Forlenza	Federal Highway Administration	Federal Highway Administration
148	Mary J Marks	St. Vincent de Paul Society	Local Resource Agency - Emergency Assistance
149	Mary Kong	United Hmong Community Center	Local Resource Agency
150	Mary Schlautman	Brown County Aging & Disability Resource Center	BC Transportation Coordinating Committee
151	Mason Manor Staff	Senior/Low-Income Apartment Provider	Local Resource Agency
152	Matthew Harris	BCPC Board of Directors	BCPC Board of Directors
153	Media	Cablevision - Time Warner Cable	Media
154	Melanie Maczka	Hispanic Community Resource Center	Local Resource Agency
155	Michael Malcheski	BCPC Board of Directors	BCPC Board of Directors
156	Michael Malcheski	BCPC Board of Directors	BCPC Board of Directors
157	Mike Engelke	Neighborhood Association	Neighborhood Association
158	Mike Erickson	Neighborhood Association	Neighborhood Association
159	Miriah Kelley	Neighborhood Association	Neighborhood Association
160	Mitch Batuzich	Federal Highway Administration	Federal Highway Administration
161	Molly Martzke	Neighborhood Association	Neighborhood Association
162	Nancy Boeddicker	Neighborhood Association	Neighborhood Association

163	Nicholas Chevance	National Park Service - Midwest Regional Office	Environmental Resource Agency
164	Norb Dantine	BCPC Board of Directors	BCPC Board of Directors
165	Norbert Dantine Jr	BCPC Board of Directors	BCPC Board of Directors
166	Office of Communications	St Norbert College	Local Educational Institution
167	Pam Busch CWDP CMM	Door-Tran	Mobility Manager in Door County
168	Pat Finder-Stone	ADRC Board of Directors/TCC Citizen Member	BC Transportation Coordinating Committee
169	Patrick Kloster	Neighborhood Association	Neighborhood Association
170	Patty Kiewiz	BCPC Board of Directors	BCPC Board of Directors
171	Paul Blindauer	BCPC Board of Directors	BCPC Board of Directors
172	Paul Fontecchio	Brown County Public Works	BCPC Transportation Subcommittee
173	Paula Breese	Family and Childcare Resources of NEW	Local Resource Agency
174	Pete Fasbender	US Fish and Wildlife Service	Environmental Resource Agency
175	Phillip Hilgenberg	BCPC Board of Directors	BCPC Board of Directors
176	President	Green Bay Area Chamber of Commerce	Economic Development
177	Randy Scannell	City of Green Bay Common Council	Green Bay Transit Commission
178	Ray Tauscher	BCPC Board of Directors	BCPC Board of Directors
179	Rebecca Nyberg	Brown County Health Department	BCPC Transportation Subcommittee
180	Reed Woodward	BCPC Board of Directors	BCPC Board of Directors
181	Roger Kolb - Chair	Green Bay Transit Commission	Green Bay Transit Commission
182	Ron Antonneau	Wisconsin Public Service	Green Bay Transit Commission
183	Ron Kamke	Forward Service Corporation	Local Resource Agency - Employment
184	Rosa Herrera	Neighborhood Association	Neighborhood Association
185	Sandy Popp	Options for Independent Living	BC Transportation Coordinating Committee
186	Scot Striffler	US Coast Guard	Environmental Resource Agency
187	Scott Vanidestine	Neighborhood Association	Neighborhood Association
188	Shawn Kassien	Neighborhood Association	Neighborhood Association
189	Skip Wilson	Neighborhood Association	Neighborhood Association
190	Steve Gander	BCPC Board of Directors	BCPC Board of Directors
191	Steve Grenier	BCPC Board of Directors	BCPC Board of Directors
192	Steve Levin	Green Bay Area Chamber of Commerce	Chamber of Commerce/Economic Development
193	Tami Frea	New Community Shelter	Local Resource Agency - Adult Shelter
194	Terri Schaeuble	BCPC Board of Directors	BCPC Board of Directors
195	Tina Whetung	Curative Connections	BC Transportation Coordinating Committee
196	Tom Klimek	Escanaba Lake Superior Railroad	BCPC Transportation Subcommittee
197	Tom Miller	Austin Straubel International Airport	BCPC Transportation Subcommittee
198	Toni Loch	Howe Neighborhood Family Resource Center	Local Resource Agency
199	Tony Lee	NEW Community Clinic	Local Resource Agency - BadgerCare outreach
200	Town Clerk	Town of Eaton	Town of Eaton
201	Town Clerk	Town of Glenmore	Town of Glenmore
202	Town Clerk	Town of Green Bay	Town of Green Bay
203	Town Clerk	Town of Holland	Town of Holland
204	Town Clerk	Town of Humboldt	Town of Humboldt
205	Town Clerk	Town of Lawrence	Town of Lawrence
206	Town Clerk	Town of Ledgeview	Town of Ledgeview
207	Town Clerk	Town of Morrison	Town of Morrison
208	Town Clerk	Town of New Denmark	Town of New Denmark
209	Town Clerk	Town of Pittsfield	Town of Pittsfield
210	Town Clerk	Town of Rockland	Town of Rockland
211	Town Clerk	Town of Scott	Town of Scott
212	Town Clerk	Town of Wrightstown	Town of Wrightstown
213	Transportation Coordinator	Abel Salvana Assisted Living	Nursing Home and/or CBRF
214	Transportation Coordinator	Adult Family - Judy Berger	Nursing Home and/or CBRF
215	Transportation Coordinator	Adult Family Home	Nursing Home and/or CBRF
216	Transportation Coordinator	Adult Family Home	Nursing Home and/or CBRF
217	Transportation Coordinator	Allouez Parkside Village	Nursing Home and/or CBRF
218	Transportation Coordinator	Angels Touch Assisted Living	Nursing Home and/or CBRF
219	Transportation Coordinator	Anna John	Nursing Home and/or CBRF
220	Transportation Coordinator	Anna's House Assisted Living	Nursing Home and/or CBRF

221	Transportation Coordinator	Artisan Senior Living	Nursing Home and/or CBRF
222	Transportation Coordinator	Badger Terrace	Nursing Home and/or CBRF
223	Transportation Coordinator	Bayshore Village	Nursing Home and/or CBRF
224	Transportation Coordinator	Bellevue Independent Living	Nursing Home and/or CBRF
225	Transportation Coordinator	Birch Creek	Nursing Home and/or CBRF
226	Transportation Coordinator	Bishops Court	Nursing Home and/or CBRF
227	Transportation Coordinator	Bornemann CBRF North	Nursing Home and/or CBRF
228	Transportation Coordinator	Bornemann CBRF South	Nursing Home and/or CBRF
229	Transportation Coordinator	Bornemann Nursing Home Inc	Nursing Home and/or CBRF
230	Transportation Coordinator	Brenner Place Assisted Living	Nursing Home and/or CBRF
231	Transportation Coordinator	Brookview Meadows	Nursing Home and/or CBRF
232	Transportation Coordinator	Brown County Mental Health Senior Living	Nursing Home and/or CBRF
233	Transportation Coordinator	Care For All Ages	Nursing Home and/or CBRF
234	Transportation Coordinator	Carrington Manor	Nursing Home and/or CBRF
235	Transportation Coordinator	CBRF	Nursing Home and/or CBRF
236	Transportation Coordinator	Century Ridge	Nursing Home and/or CBRF
237	Transportation Coordinator	Century Ridge II	Nursing Home and/or CBRF
238	Transportation Coordinator	Clarity Care Assisted Living	Nursing Home and/or CBRF
239	Transportation Coordinator	Clarity Care Bernard on Hoffman	Nursing Home and/or CBRF
240	Transportation Coordinator	Compass Development	Nursing Home and/or CBRF
241	Transportation Coordinator	Compass Development LLC	Nursing Home and/or CBRF
242	Transportation Coordinator	Compass Development LLC	Nursing Home and/or CBRF
243	Transportation Coordinator	Cottage Living at Marla Vista	Nursing Home and/or CBRF
244	Transportation Coordinator	Creekside Assisted Living	Nursing Home and/or CBRF
245	Transportation Coordinator	Encompass Development	Nursing Home and/or CBRF
246	Transportation Coordinator	Executive/Harmony Manor	Nursing Home and/or CBRF
247	Transportation Coordinator	Georgia Pacific Corporation	Local business or agency w 1,500+ employees
248	Transportation Coordinator	Glen Creek Adult Family Home	Nursing Home and/or CBRF
249	Transportation Coordinator	Golden Living Center - Village Gardens	Nursing Home and/or CBRF
250	Transportation Coordinator	Gonzalez Adult Family Home	Nursing Home and/or CBRF
251	Transportation Coordinator	Grancare Nursing Center	Nursing Home and/or CBRF
252	Transportation Coordinator	Green Bay Area Public Schools	Local business or agency w 1,500+ employees
253	Transportation Coordinator	Hannah II Adult Family Home	Nursing Home and/or CBRF
254	Transportation Coordinator	Harbor House	Nursing Home and/or CBRF
255	Transportation Coordinator	Hill Rockwood Heights Assisted Living	Nursing Home and/or CBRF
256	Transportation Coordinator	Howard Tipler Caregiver	Nursing Home and/or CBRF
257	Transportation Coordinator	Humana Incorporated	Local business or agency w 1,500+ employees
258	Transportation Coordinator	Innovated Services	Nursing Home and/or CBRF
259	Transportation Coordinator	Innovative Services	Nursing Home and/or CBRF
260	Transportation Coordinator	Innovative Services Bufflehead Assisted Living	Nursing Home and/or CBRF
261	Transportation Coordinator	Innovative Services Inc	Nursing Home and/or CBRF
262	Transportation Coordinator	Kindred Hearts of Green Bay	Nursing Home and/or CBRF
263	Transportation Coordinator	Kurtz Adult Family Home	Nursing Home and/or CBRF
264	Transportation Coordinator	Ledgeview Nursing Center	Nursing Home and/or CBRF
265	Transportation Coordinator	Lee Transportation	Private Transportation Provider
266	Transportation Coordinator	Libal Street Home	Nursing Home and/or CBRF
267	Transportation Coordinator	LSS Durham Assisted Living CBRF	Nursing Home and/or CBRF
268	Transportation Coordinator	LSS Preble House CBRF	Nursing Home and/or CBRF
269	Transportation Coordinator	Mannette House	Nursing Home and/or CBRF
270	Transportation Coordinator	Manor Care Health Services - East	Nursing Home and/or CBRF
271	Transportation Coordinator	Manor Care Health Services - West	Nursing Home and/or CBRF
272	Transportation Coordinator	Marla Vista Manor	Nursing Home and/or CBRF
273	Transportation Coordinator	Martin Adult Family Assisted Living	Nursing Home and/or CBRF
274	Transportation Coordinator	McCormick Memorial Home	Nursing Home and/or CBRF
275	Transportation Coordinator	Mirage Pointe Adult Family Home	Nursing Home and/or CBRF
276	Transportation Coordinator	Moraine Ridge	Nursing Home and/or CBRF
277	Transportation Coordinator	Nemetz Adult Family Home	Nursing Home and/or CBRF
278	Transportation Coordinator	New Hope Assisted Living	Nursing Home and/or CBRF

279	Transportation Coordinator	Nicolet Highlands Retirement Home	Nursing Home and/or CBRF
280	Transportation Coordinator	Oak Family Care Center	Nursing Home and/or CBRF
281	Transportation Coordinator	Oaks Family Care	Nursing Home and/or CBRF
282	Transportation Coordinator	Oaks Family Care	Nursing Home and/or CBRF
283	Transportation Coordinator	Oaks Family Care Center	Nursing Home and/or CBRF
284	Transportation Coordinator	Odd Fellows Home	Nursing Home and/or CBRF
285	Transportation Coordinator	Odd Fellows Rebekah Home Assisted Living	Nursing Home and/or CBRF
286	Transportation Coordinator	Oriole	Nursing Home and/or CBRF
287	Transportation Coordinator	Our Place Assisted Living	Nursing Home and/or CBRF
288	Transportation Coordinator	Parkview Manor Health Rehab Center	Nursing Home and/or CBRF
289	Transportation Coordinator	Parkway Highlands Retirement Living Community	Nursing Home and/or CBRF
290	Transportation Coordinator	Patient Pines Assisted Living Inc	Nursing Home and/or CBRF
291	Transportation Coordinator	Platten Street Adult Family Home	Nursing Home and/or CBRF
292	Transportation Coordinator	Rebekah Haven	Nursing Home and/or CBRF
293	Transportation Coordinator	Rennes Health and Rehab Center	Nursing Home and/or CBRF
294	Transportation Coordinator	Ridge Pointe CBRF Assisted Living	Nursing Home and/or CBRF
295	Transportation Coordinator	Ridges Group Home	Nursing Home and/or CBRF
296	Transportation Coordinator	San Luis Med and Rehab	Nursing Home and/or CBRF
297	Transportation Coordinator	Santa Maria Nursing Home	Nursing Home and/or CBRF
298	Transportation Coordinator	Schneider National Incorporated	Local business or agency w 1,500+ employees
299	Transportation Coordinator	Senior Manor	Nursing Home and/or CBRF
300	Transportation Coordinator	Sherwood Place	Nursing Home and/or CBRF
301	Transportation Coordinator	Shopko Stores Incorporated	Local business or agency w 1,500+ employees
302	Transportation Coordinator	St. Vincent Hospital	Local business or agency w 1,500+ employees
303	Transportation Coordinator	Superior Rd Adult Family Home Assisted Living	Nursing Home and/or CBRF
304	Transportation Coordinator	Willow Creek Family Home Assisted Living	Nursing Home and/or CBRF
305	Transportation Coordinator	Wisconsin Historical Society	Environmental Resource Agency
306	Transportation Coordinator	Wisconsin Pathways to Independence	Local Resource Agency
307	Transportation Coordinator	Woodside Haven Inc	Nursing Home and/or CBRF
308	Transportation Coordinator	Woodside Lutheran Home	Nursing Home and/or CBRF
309	Transportation Coordinator	Woodside Manor	Nursing Home and/or CBRF
310	Transportation Coordinator	Woodside Manor	Nursing Home and/or CBRF
311	Transportation Coordinator	Woodside Oaks	Nursing Home and/or CBRF
312	Transportation Coordinator	WPS Resources	Local business or agency w 1,500+ employees
313	Transportation Coordinator	Wyndemere Assisted Living	Nursing Home and/or CBRF
314	Transportation Coordinator	Zambon Adult Family Home	Nursing Home and/or CBRF
315	Troy Parr	Oneida Tribe of Wisconsin	BCPC Transportation Subcommittee
316	Troy Streckenbach	Brown County Executive	Brown County Executive
317	Trudy Jacobson	Neighborhood Association	Neighborhood Association
318	Vicki Petersen	Neighborhood Association	Neighborhood Association
319	Village Clerk	Village of Allouez	Village of Allouez
320	Village Clerk	Village of Ashwaubenon	Village of Ashwaubenon
321	Village Clerk	Village of Bellevue	Village of Bellevue
322	Village Clerk	Village of Denmark	Village of Denmark
323	Village Clerk	Village of Hobart	Village of Hobart
324	Village Clerk	Village of Howard	Village of Howard
325	Village Clerk	Village of Pulaski	Village of Pulaski
326	Village Clerk	Village of Suamico	Village of Suamico
327	Village Clerk	Village of Wrightstown	Village of Wrightstown
328	Vinny Caldara	MV Transportation	Private Transportation Provider
329	William Clancy	BCPC Board of Directors	BCPC Board of Directors
330	William Peters	Neighborhood Association	Neighborhood Association

Appendix C Brown County Meeting - Agenda

AGENDA Coordinated Public Transit – Human Services Transportation Plan for Brown County, Wisconsin

Tuesday, September 27, 2016
Green Bay Metro Transportation Center Commission Room
901 University Avenue
Green Bay, Wisconsin
9:15 a.m. – 10:45 a.m.

ORDER OF BUSINESS

1. Welcome and introductions.
2. Discussion of the federal requirement for a *locally developed coordinated public transit-human services transportation plan*.
3. Assessing Specialized Transportation Services in Brown County.
4. Populations of Seniors, Individuals with Disabilities, and Low-Income Individuals.
5. Presentations from:
 - Patty Kiewiz**, Director, Green Bay Metro
 - Specialized Transportation Mobility Coordination Program for Brown County*
 - Aaron Schuette**, Principal Planner, Brown County Planning Commission
 - Author of the recently published Rural Specialized Transportation Needs Study for Brown County, WI*
6. Review progress of *Action Plan*.
7. Identification of transportation service needs and gaps by meeting participants.
8. Approval of 2017-2021 *Program of Projects*.
9. Other matters.
10. Adjourn.

Please **RSVP** to Lisa J. Conard at conard_lj@co.brown.wi.us or (920) 448-6489 by Wednesday, September 21.

ANY PERSON WISHING TO ATTEND WHO, BECAUSE OF A DISABILITY, REQUIRES SPECIAL ACCOMMODATION SHOULD CONTACT THE BROWN COUNTY PLANNING COMMISSION OFFICE AT (920) 448-6480 AT LEAST TWO BUSINESS DAYS BEFORE THE MEETING SO ARRANGEMENTS CAN BE MADE.

Brown County Coordinated Public Transit-Human Services Transportation Plan

Meeting Notice



You are invited...

A meeting will be held to conduct an assessment of public transit-human services transportation coordination and to review a list of programmed transportation projects. The meeting will be facilitated by Brown County Planning Commission/MPO staff and will be held on:

**Tuesday, September 27, 2016
Green Bay Metro Transportation Center
901 University Avenue
Green Bay, Wisconsin
9:00 a.m.**

Please **RSVP** to Lisa J. Conard at conard_lj@co.brown.wi.us or (920) 448-6489 by Wednesday, September 21.

ANY PERSON WISHING TO ATTEND WHO, BECAUSE OF A DISABILITY, REQUIRES SPECIAL ACCOMMODATION SHOULD CONTACT THE BROWN COUNTY PLANNING COMMISSION OFFICE AT (920) 448-6480 AT LEAST TWO BUSINESS DAYS BEFORE THE MEETING SO ARRANGEMENTS CAN BE MADE.

**Appendix E
Brown County Meeting - Evaluation Form and Results**

**Coordinated Public Transit-Human Services Transportation Plan Meeting
for Brown County
September 27, 2016
Green Bay Metro – Commission Room
901 University Avenue
Green Bay, WI 54302**

Evaluation form Summary

For each item below, place a check mark in the box that best expresses your opinion.

	Issue	Strongly Agree	Agree	No Opinion	Disagree	Strongly Disagree
1.	The information covered was understandable.	62%	38%			
2.	The meeting provided a good forum for communication about public transit-human services transportation coordination.	57%	43%			
3.	Developing the draft action plan was meaningful and valuable.	62%	29%	9%		
4.	The draft action plan developed is comprehensive. <i>(one attendee did not reply)</i>	55%	35%	10%		
5.	I feel coordination in the county will be improved with implementation of the action plan. <i>(one attendee did not reply)</i>	60%	40%			
6.	The facilitator(s) was knowledgeable about public transit – human services transportation services in Brown County.	67%	33%			
7.	The presentations (Green Bay Metro & Brown County Planning Commission staff) were informative. <i>(one attendee did not reply)</i>	70%	30%			
8.	The time allocated for the meeting was just right. <i>(one attendee did not reply)</i>	60%	40%			

Appendix F
Notice of Public Meeting

GREEN BAY PRESS-GAZETTE



STATE OF WISCONSIN
BROWN COUNTY

Rectangular Snip

BROWN COUNTY PLANNING LEGALS
305 E. WALNUT ST., STE 320
GREEN BAY, WI 54301-5027

I, being duly sworn, doth depose and say I am an authorized representative of the Green Bay Press Gazette, a daily newspaper published in said at Green Bay, Wisconsin, and that an advertisement of which the annexed is a true copy, taken from said paper, which published therein on:

Account Number: 284368

Ad Number: 1561455

Published Date: September 13, 2016

Published Date: September 20, 2016

NOTICE OF PUBLIC MEETING
ON THE DEVELOPMENT OF THE
COORDINATED PUBLIC
TRANSIT-HUMAN SERVICES
TRANSPORTATION PLAN
FOR BROWN COUNTY, WISCONSIN
All interested persons are advised of a public meeting on the development of the Coordinated Public Transit-Human Services Transportation Plan for Brown County, Wisconsin. The meeting will include the review of a list of projects qualifying for Federal Section 5310 Enhanced Mobility of Seniors and Individuals with Disabilities Program. The meeting will also include the completion of an assessment of human services transportation coordination by transportation providers and stakeholders who attend this meeting.
The public meeting will take place on:
Tuesday, September 27, 2016
Green Bay Metro Transportation Center
901 University Avenue
Green Bay, Wisconsin
9:15 a.m.
Published by
Sandy Juno
County Clerk
Please contact Lisa J. Conard at conard_lj@gp.gazette.com or 448-6489 if you have any questions or to RSVP.
Run: Sept. 13, 20, 2016 WNAJLP

(Signed): Jim Humbert Date: 10-12-16
Legal Clerk



Signed and sworn to before me
Erin Duffy
Notary Public,
Brown County, Wisconsin
My commission expires 5-25-18

GANNETT WI MEDIA
435 EAST WALNUT ST.
PO BOX 23430
GREEN BAY, WI 54305-3430

GANNETT
Wisconsin Media
Delivering Customers. Driving Results.

PHONE 920-431-8298
FAX 877-943-0443
EMAIL legals@greenbaypressgazette.com

Appendix G
County Transportation Services Inventory Worksheets

1. Green Bay Metro – Fixed Route Bus Service

Program Name:	Green Bay Metro
Sponsoring Agency:	Green Bay Metro 901 University Avenue Green Bay, WI 54302
Phone/Information:	(920) 448-3450
Contact Person:	Patty Kiewiz, Director
Eligibility:	General Public
Days and Hours of Operation:	Monday – Friday 5:15 a.m. - 9:45 p.m. Saturday 7:15 a.m. - 6:45 p.m. No Sunday or major holidays
Cost:	Unlimited Day Pass: Adults \$3.00; Students \$2.00; Reduced \$1.50 Discounted 30-Day passes are available
Vehicle Type:	35 buses ranging from 30' to 40'
Lift/Ramp Equipped:	all full service vehicles are accessible
Scheduling:	fixed route
Volunteers:	None
Funding Sources:	85.20 (operating), 5307 (operating), 5309 (capital), local funds, advertising, and fares

2. Green Bay Metro – Paratransit Program

Program Name:	Green Bay Metro – Paratransit Program
Sponsoring Agency:	Green Bay Metro 901 University Avenue Green Bay, WI 54302
Contracted Provider:	Green Bay Metro RE: Paratransit Program/MV 901 University Avenue Green Bay, WI 54302
Phone/Scheduling:	(920) 465-4488
Contact Person:	Patty Kiewiz, Director, Green Bay Metro (920) 448-3450
Eligibility:	individuals with qualifying disabilities based on ADA regulations
Days and Hours of Operation:	Monday – Friday 5:15 a.m. - 9:45 p.m. Saturday 7:15 a.m. - 6:45 p.m. No Sunday or major holidays
Cost:	\$3.00 origin to destination; \$15.00 agency
Vehicle Type:	20
Lift/Ramp Equipped:	all vehicles are lift equipped
Scheduling:	call 24 hours in advanced; subscription
Volunteers:	None
Funding Sources:	85.20 (operating), 5307 (operating), local funds, advertising, and fares

3. Curative Connections Northeast Region

Program Name:	Curative Connections
Sponsoring Agencies:	Curative Connections Northeast Region 2131 Deckner Avenue Green Bay, WI 54302 <hr/> Aging and Disability Resource Center of Brown County 300 South Adams Street Green Bay, WI 54301
Phone/Reservations:	(920) 227-4272
Contact Person:	Tina Whetung, Transportation Services Director; (920) 227-4271
Eligibility:	Persons age 60 years or older or individuals with disabilities
Days and Hours of Operation:	Monday – Friday 8:00 a.m. – 4:30 p.m.
Cost:	\$3.00 per one-way trip; \$14.00 agency
Vehicle Type:	24 buses, vans, mini vans, and sedans
Lift/Ramp Equipped:	accessible vehicles available
Scheduling:	demand response (call 24-48 hours in advance)
Volunteers:	85 volunteer drivers
Funding Sources:	85.21 (operating), 5310 (vehicles), fares, and donations

4. Oneida Transit

Program Name:	Oneida Public Transit
Sponsoring Agency:	Oneida Tribe of Indians of Wisconsin/Oneida Public Transit 3759 West Mason Street Suite #5 Green Bay, WI 54313
Phone/Information:	(920) 496-5770
Contact Person:	Brandon Cooper, Director
Eligibility:	General Public
Days and Hours of Operation:	Monday – Friday 5:00 a.m. – 9:00 p.m.
Fares within Reservation	Adults \$1.50 (one-way); Students \$1.00 (one-way) E&D \$1.00 (one-way) or \$1.50 (round-trip); passes available
Vehicle Type:	9 buses and 2 mini-vans
Lift/Ramp Equipped:	buses are lift equipped; mini-vans have ramps
Scheduling:	primarily demand response; limited fixed route
Volunteers:	None
Funding Sources:	85.21 (operating), 5307 (operating), 5309 (capital), local funds, and fares