

**PROCEEDINGS OF THE BROWN COUNTY
PLANNING, DEVELOPMENT & TRANSPORTATION COMMITTEE**

Pursuant to Section 19.84 Wis. Stats., a regular meeting of the **Brown County Planning, Development & Transportation Committee** was held on Monday, May 20, 2013 @ Duck Creek Public Works Department, 2198 Glendale Avenue, Howard, WI.

Present: Chair Erickson, Supervisors Dantine, Kaster, Landwehr, Sieber
Also Present: Paul Van Noie, Doug Marsh, Paul Fontecchio, Brandy Younger, Chuck Lamine, Dean Haen, Fred Monique, Troy Streckenbach, Other Interested Parties.

I. Call Meeting to Order

The meeting was called to order by Chairman Bernie Erickson at 5:26 p.m.

II. Approve/Modify Agenda.

Item #10 should state "support" freezing, not "oppose" freezing.

Motion made by Supervisor Dantine, seconded by Supervisor Kaster to approve as modified.

Vote taken. MOTION CARRIED UNANIMOUSLY.

III. Approve/Modify Minutes of April 22, 2013.

Motion made by Supervisor Seiber, seconded by Supervisor Landwehr to approve. Vote taken. MOTION CARRIED UNANIMOUSLY.

1. Review minutes of:

a. Board of Adjustment (April 29, 2013).

Motion made by Supervisor Kaster, seconded by Supervisor Sieber to approve. Vote taken. MOTION CARRIED UNANIMOUSLY.

b. Planning Commission Board of Directors (April 3, 2013).

Motion made by Supervisor Dantine, seconded by Supervisor Sieber to approve. Vote taken. MOTION CARRIED UNANIMOUSLY.

Comments from the Public None.

Presentation

2. WisDOT Northeast Region Update.

Employees from the WisDOT Northeast Region were present:
Brian Brock, Planning and Operations Manager.
Mike King, USH 41 Construction Supervisor.
Andy Fulcer, Brown County Project Manager.
William Dorsey, Northeast Region Director.
Colleen Harris, Northeast Region Deputy Director.
Al Rommel, Project Development Manager.

Brock informed that they appreciated being added to the agenda and informed that they would start off going over projects scheduled and some of the longer term studies. In regard to the long range studies Colleen Harris spoke to the US41 Interstate Conversion, in which they would be renaming US41 to Interstate 41 in 2014. They were looking at this for two years and were working towards a goal of putting interstate shields up on Hwy 41. Another project they were working on was Main Street, West side of DePere, rehabbing the one way street. They had a pretty intensive study going on with all the local businesses involved. The study will go on for the next two years. Harris

informed that starting this fall they would be looking at the Mason Street Bridge. They were looking to do a feasibility study for possible repairs as the bridge was getting old. Throughout the Brown County area they were looking at passing lane studies/opportunities, specifically Hwy 54 on the east side of Green Bay and from County X to FF on the west side.

Landwehr informed that he would have liked hear on their project list the interchange over 29/Maplewood Meats area. It was a very dangerous area and he'd hate to see it where 5-years from now something was being pushed forward due to a major accident. Harris responded that they recognized this and had studied it with Brown County Planning. They helped make the recommendations and then took it over and came up with a long range plan and official mapping. They had official mapping for an interchange however the problem with that was it was very costly to implement an interchange at FF and the one by Maplewood Meats and they could not obtain funding because both projects together were over \$40 million dollars. They prioritized the FF project first because they were making the big improvement – 29 Interchange. She informed that they will have a plan ready to go so if there was some funding available they will be able to suggest that as an upcoming project. On a statewide basis there were a number of at grade intersections on expressways and the challenge was how you fund all those.

At this time Mike King provided a handout re: 2013 US 41 Project Traveler's Guide (attached) and spoke to it. Al Rommel provided handouts re: Wisconsin Six Year Highway Improvement Programs (attached), in which he highlighted projects from it.

Dantinne questioned what happened to Tower Drive Bridge, it was no longer smooth. There were different joints out there now, the old joints were buried there, there were railroad tracks inside of them with multiple bumps inside of those and then there was concrete on the other side. The other issue was the asphalt that they put down. It was rare type that was used to keep water from getting into the bridge deck. It was really sticky and once you put it down you can't move it too much and they had a hard time getting it smoothed into the joint. They had compounding factors. They took a different approach on the southbound lanes and changed some things up and they did have a better ride. A contractor was going to go in there and do some repairs to the joints that he can fix.

Airport

3. **Budget Status Financial Report for April, 2013.**

Motion made by Supervisor Sieber, seconded by Supervisor Dantinne to receive and place on file. Vote taken. MOTION CARRIED UNANIMOUSLY.

Register of Deeds

4. **Budget Status Financial Report for January-March, 2013.**

Motion made by Supervisor Kaster, seconded by Supervisor Landwehr to receive and place on file. Vote taken. MOTION CARRIED UNANIMOUSLY.

Port & Solid Waste

5. **Resolution to Lease Two Acres of land at 1445 Bylsby Avenue to Greenwood Energy.**

Motion made by Supervisor Dantinne, seconded by Supervisor Kaster to approve. Vote taken. MOTION CARRIED UNANIMOUSLY.

6. **Resolution to Lease Six Acres of Land at 3800 Heritage Road to Forward Vision Environmental.**

3p. should read "as" the East Landfill, not "at" the East Landfill.

Motion made by Supervisor Landwehr, seconded by Supervisor Sieber to approve. Vote taken. MOTION CARRIED UNANIMOUSLY.

7. **Budget Adjustment 13-39: Increase in expense with offsetting increase in revenue.**

In previous year's, Port was awarded a WI Harbor Assistance Program Grant and US Fish & Wildlife/NRDA Grant to partially fund Brown County's Cat Island Project. While the award period for these grants span over several fiscal years, the project is progressing much faster than anticipated. In addition to the grant awards, Brown County's match requirement is to be met with a transfer of Harbor Fee funds. This adjustment is to increase and reallocate the project expenses and corresponding grant revenue awarded for the anticipated 2013 activity.

Motion made by Supervisor Dantine, seconded by Supervisor Sieber to approve. Vote taken. MOTION CARRIED UNANIMOUSLY.

8. **Director's Report.**

Haen referred to the Director's Report in the agenda packet (info below) and highlighted his report with the committee:

Renard Island Closure – Work was underway with the WDNR and Corps to develop a contract for completing all WDNR required closure activities this upcoming winter. Efforts will involve a closure date extension request and request to change other DNR approval conditions that were considered unnecessary during winter construction. Discussion will also begin to address the removal or transfer of ownership of the causeway. Eventually the ultimate end use of the island will need to begin. Retained consultant was evaluating the possibility of receiving Natural Resource Damages (NRD) funds from the Fox River Clean-up responsible parties.

Cat Island Chain Restoration Project – The project was 20% below cost and the effort was underway to utilize existing state and federal funds to construct the future off-loading facility now. Baseline research was being conducted by UW-Green Bay to establish current conditions and assist in determining future benefits derived from the project. Construction conditions were dry and caused some dust issue which was being addressed by the Corps.

2nd shift at the BOW Single Stream Recycling Facility – The contract with Advanced Disposal Systems was being negotiated. Capital investment for a 2nd baler and optical sorter was being created. Outagamie County table of organization for additional staffing was also in the process of being approved.

Motion made by Supervisor Sieber, seconded by Supervisor Landwehr to receive and place on file. Vote taken. MOTION CARRIED UNANIMOUSLY.

Planning and Land Services

Planning Commission

9. **Resolution to Authorize the Participation of Brown County in Forming a Bay-Lake Regional Loan Fund.**

Lamine informed that this was an effort to create reasonable economic development revolving loan fund programs. A handout was provided and attached re: WEDC Regional Economic Development Revolving Loan (RLF) Project. The intent was to try to consolidate the local CDBG Business Revolving Loan Funds that exist in counties in the Bay-Lake region into a regional loan fund to provide a more effective financing program that will remove existing federal regulations, open up the funds to more businesses and projects, streamline fund management, and relieve individual communities of administration and legal responsibilities. Lamine informed that the primary advantage for Brown County was it would eventually reduce some of the federal strings that were attached to the grant programs; ones that almost prohibited using funds for any construction related projects. By going through this process they would be able to do Sod loans for downtown and smaller projects that in the past were cost prohibited because there were so many administrative strings attached with tracking wage scale. This would open up a lot of extra dollars, a lot of the funds that were existing in Revolving Loan Fund programs statewide were being sat on and not being used. The communities that were more aggressive in packaging the loans were going to be affective in getting those monies out and help create new jobs and great economic opportunities.

Monique informed that participation was optional and out of the eight counties they had an indication that Manitowoc County would not be joining at this time. It was not mandatory that all eight counties go in. The goal was five, if they didn't get five there would have to be a conversation. Even Brown County would have to make a decision in the final round.

Sieber questioned who would be administering the loans. Monique stated that once this was created they would probably go to request for quote and Advance would respond to it but it was unknown who else in the area was interested.

Lamine informed that a not-for-profit, Board of Directors will be created with representation from each county to decide who will manage this. That committee will go through an RFQ/RFP process to hire an administrator.

Motion made by Supervisor Dantine, seconded by Supervisor Kaster to approve. Vote taken. MOTION CARRIED UNANIMOUSLY.

Public Works

10. **Resolution No.: 139-2012-13 re: ~~oppose~~ support freezing the renewable energy requirements. Held for one month.**

Sieber stated that Brown County wasn't even mentioned in this resolution; it didn't have anything to do with Brown County and suggested receiving and placing this item on file.

Motion made by Supervisor Landwehr, seconded by Supervisor Kaster to approve. Vote taken. Nay: Sieber. MOTION CARRIED 4-1

11. **Summary of Operations.**

Van Noie referred to the "Summary of Operations for Public Works" which was located in the packet and highlighted several items with the committee.

Landwehr questioned roughly what was in the reserve funds. Public Works-Highway Business Manager Brandy Younger informed that it was a little over \$1M for maintenance and \$3.9M in the 240 Fund.

Motion made by Supervisor Sieber, seconded by Supervisor Dantine to receive and place on file. Vote taken. MOTION CARRIED UNANIMOUSLY.

12. **Director's Report.**

Van Noie reported on a number of significant items from his written Director's Report including the "First Quarter Project Highlights", which was located in the agenda packet.

Sieber questioned if they were going to renovate the building at the landfill or build new buildings. Van Noie responded that they had a plan in place and it was two-phased. One would be a new 4,000sq.ft. Pole building that would go slightly behind the jail and would cost roughly \$110,000. The balance of the \$160,000 was to tighten up the facility near the landfill. That may or may not meet their needs but they it was put in the budget. If the county goes into a different direction they may have to return those dollars to the general fund.

Kaster stated that they were doing a great job reducing the footprint on some of the roads and stopped building humungous Cadillac roads. He was in favor of that for a long time and was glad that they were heading in that direction.

Motion made by Supervisor Sieber, seconded by Supervisor Dantine to receive and place on file. Vote taken. MOTION CARRIED UNANIMOUSLY.

Other

13. **Audit of bills**

Motion made by Supervisor Landwehr, seconded by Supervisor Sieber to pay the bills. Vote taken. MOTION CARRIED UNANIMOUSLY.

14. **Such other matters as authorized by law - None**

Motion made by Supervisor Dantine, seconded by Supervisor Landwehr to adjourn @ 6:45 pm. Vote taken. MOTION CARRIED UNANIMOUSLY.

Respectfully submitted, Alicia A. Loehlein, Recording Secretary

Connect with us!



US41wisconsin.gov



Twitter.com/WisconsinUS41



Facebook.com/WisconsinUS41

US 41 PROJECT TRAVELER'S GUIDE

What you need to know before you go

Traffic impacts, project maps and alternate routes

US 41 Project work in 2013 will focus on expansions and improvements in Brown County, while wrapping up construction activities in Winnebago County. This important highway connects Green Bay, the Fox Valley and northern Wisconsin with major urban centers in Madison, Milwaukee and beyond.



CONNECTING WISCONSIN



Traveler information at your fingertips

www.511wi.gov

Rideshare helps match commuters for carpooling. To learn more about these free services contact Rideshare:

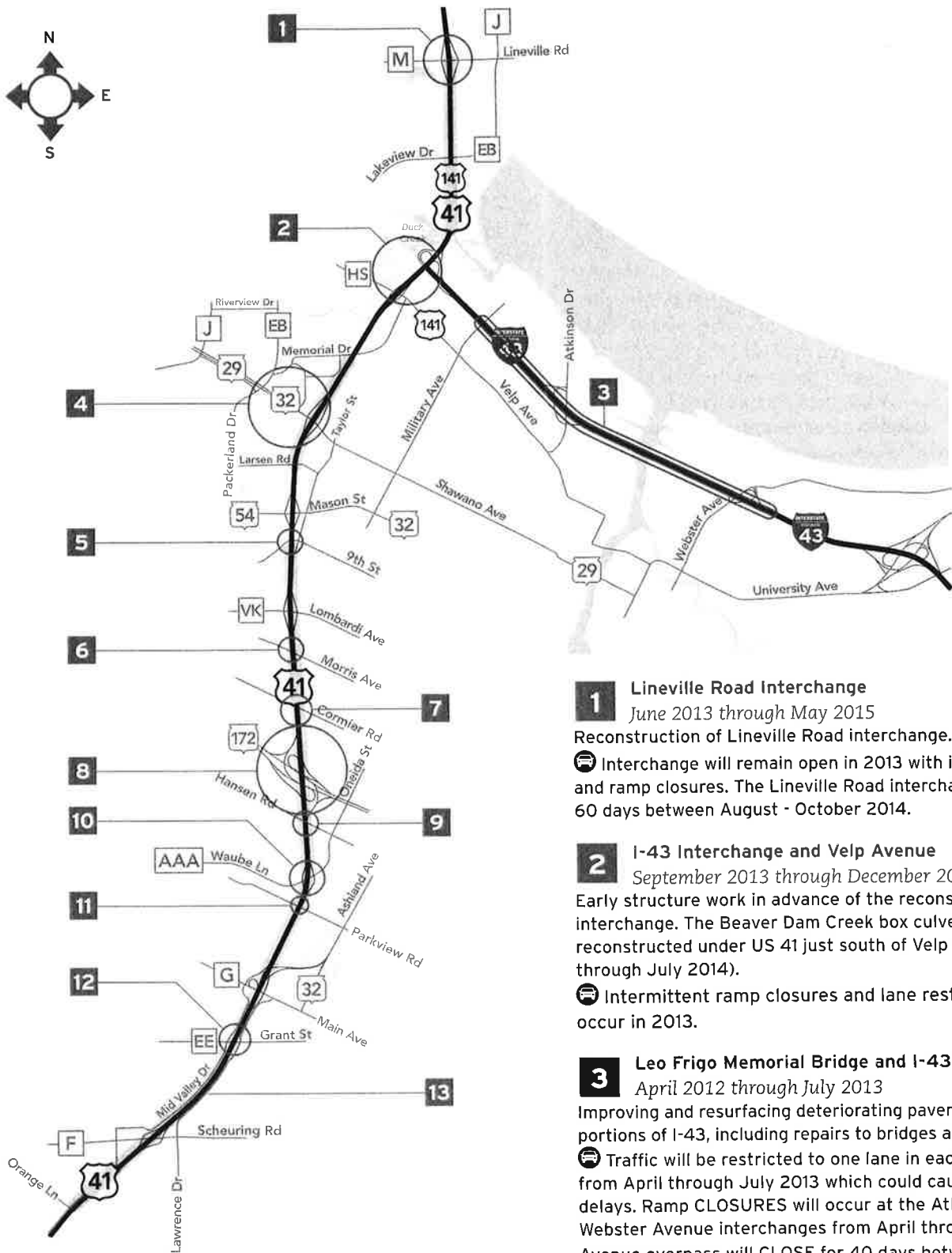
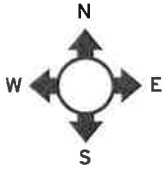


Rideshare.wisconsin.gov



(800) 455-POOL(7665)





1 Lineville Road Interchange
June 2013 through May 2015
 Reconstruction of Lineville Road interchange.
 🚧 Interchange will remain open in 2013 with intermittent lane and ramp closures. The Lineville Road interchange will CLOSE for 60 days between August - October 2014.

2 I-43 Interchange and Velp Avenue
September 2013 through December 2016
 Early structure work in advance of the reconstruction of the I-43 interchange. The Beaver Dam Creek box culvert is also being reconstructed under US 41 just south of Velp Avenue (March 2013 through July 2014).
 🚧 Intermittent ramp closures and lane restrictions will occur in 2013.

3 Leo Frigo Memorial Bridge and I-43
April 2012 through July 2013
 Improving and resurfacing deteriorating pavement on the bridge and portions of I-43, including repairs to bridges and local intersections.
 🚧 Traffic will be restricted to one lane in each direction on I-43 from April through July 2013 which could cause significant travel delays. Ramp CLOSURES will occur at the Atkinson Drive and Webster Avenue interchanges from April through July 2013. Military Avenue overpass will CLOSE for 40 days between May - June 2013.

*MAP NOT TO SCALE

Brown County

KEY



Traffic impacts



Alternate route

4 WIS 29 System Interchange *September 2012 through October 2014*

Reconstruction as a system-to-system interchange and service interchange.

Westbound traffic routed onto newly-aligned Shawano Avenue and WIS 29 on-ramp at Packerland Drive; eastbound traffic routed onto the WIS 29 off-ramp, north along Packerland Drive and east along newly-aligned Shawano Avenue (WIS 29). Intermittent ramp closures and lane restrictions will occur in 2013. Southbound US 41 exit to Mason Street will be accessed by a temporary ramp from Shawano Avenue in 2013.

5 9th Street *June 2013 through August 2013*

Reconstruction of 9th Street roadway and sidewalks under US 41.

9th Street at US 41 will CLOSE for 40 days between June - August 2013.

6 Morris Avenue *August 2013 through 2015*

Preparation for major construction planned for Fall 2014.

Intermittent lane closures and restrictions along Morris Avenue in 2013. Morris Avenue will CLOSE for 30 days between June - August 2014, and again for 30 days between June - August 2015. The roadway will remain open during Packer games and Morris Avenue will not be closed simultaneously with Cormier Road.

7 Cormier Road *August 2013 through 2015*

Preparation for major construction planned for Fall 2014.

Intermittent lane closures and restrictions along Cormier Road in 2013. Cormier Road will CLOSE for 30 days between June - August 2014, and again for 30 days between June - August 2015. The roadway will remain open during Packer games and it will not be closed simultaneously with Morris Avenue.

8 WIS 172 Ramps *Fall 2013 through Summer 2015*

Reconstruction of WIS 172 ramps and mainline at US 41.

Eastbound WIS 172 to northbound US 41 ramp will CLOSE starting in Fall 2013. Intermittent ramp and lane closures on westbound WIS 172 to southbound US 41 and eastbound and westbound WIS 172 mainlines at US 41 will occur starting in Fall 2013. The northbound US 41 to westbound WIS 172 ramp will CLOSE for 14 days in Summer 2014; the southbound US 41 to westbound WIS 172 ramp will CLOSE for 14 days in Fall 2015.

Packerland Drive to Lombardi Avenue

9 Hansen Road Bridge *September 2013 through August 2014*

Reconstruction of Hansen Road bridge over US 41.

Bridge will CLOSE between September 2013 - August 2014.
 South Ridge Road to Waube Lane/Oneida Street

10 Waube Lane/Oneida Street Interchange *September 2013 through Fall 2015*

Preparation in 2013 and 2014 for major construction in 2015.

Interchange and Oneida Street will remain open during construction with intermittent nighttime lane and ramp closures.

11 Parkview Road *August 2013 through 2015*

Preparation in 2013 for major construction planned for 2014.

Intermittent lane closures and restrictions will occur along Parkview Road. Parkview Road will CLOSE for 45 days in Summer/Fall 2014.

12 Grant Street *May through June of 2013*

Reconstruction of Grant Street under US 41 including intersection with Mid Valley Drive.

Grant Street, including intersection with Mid Valley Drive, will CLOSE for 150 days between May - September 2013.
 Main Avenue and Scheuring Road

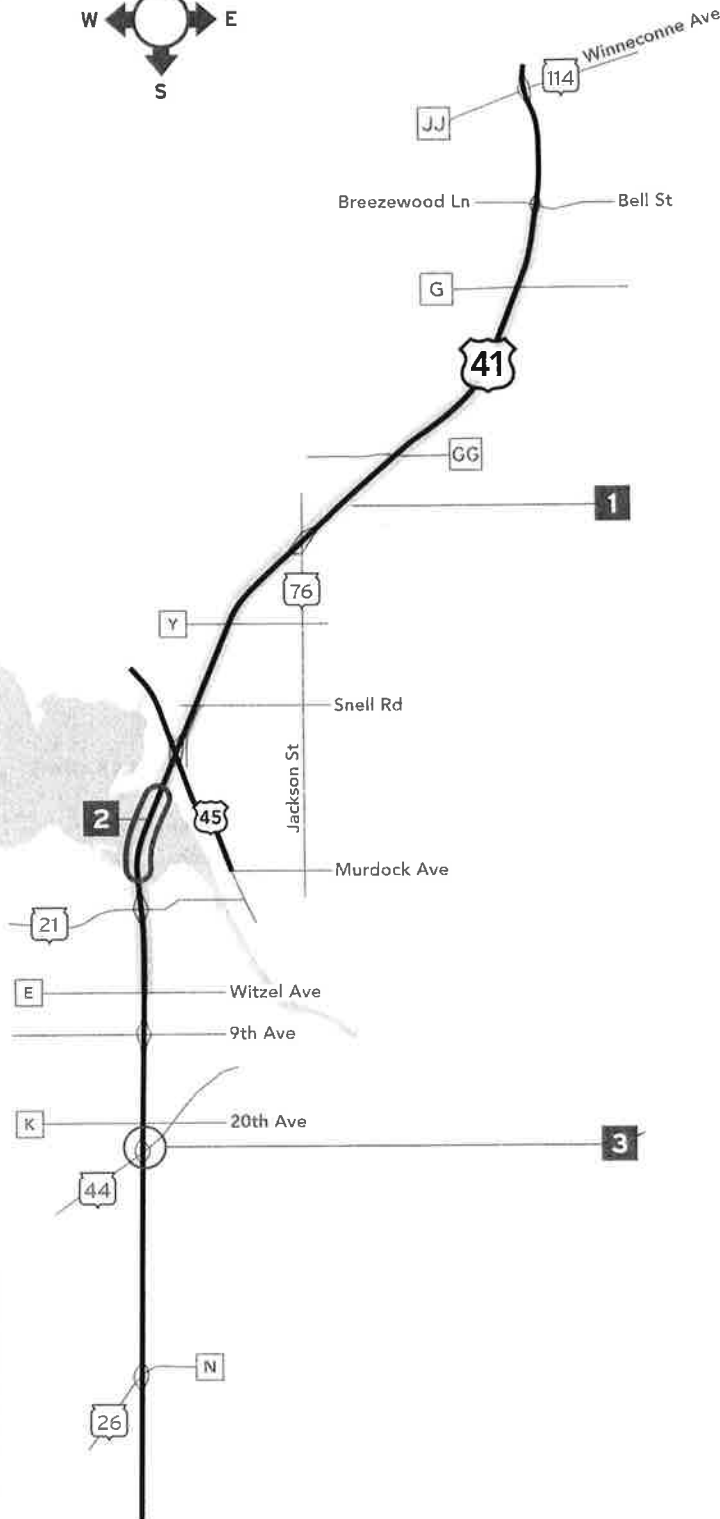
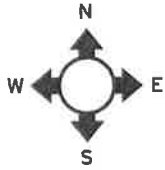
13 Mainline US 41 **Mainline segments under construction in 2013: Orange to 9th; Larsen to Memorial; Duck Creek to Lineville** *March 2012 through July 2016*

Reconstruction of US 41 mainline and structures.

Reconstruction of US 41 mainline and structures. The US 41 mainline will have two lanes of traffic in each direction, with nighttime lane restrictions and/or ramp closures.

CONSTRUCTION SCHEDULES ARE SUBJECT TO CHANGE.
FOR THE LATEST INFORMATION VISIT US41wisconsin.gov.
THE US 41 PROJECT IS SLATED FOR COMPLETION IN 2017.

Winnebago County



KEY

Traffic impacts

Good news! In 2013 there will not be any US 41 interchange closures in Winnebago County.

- 1 US 41 Mainline**
Witzel Avenue to US 45
August 2011 through July 2013
US 45 to Breezewood Lane
April 2011 through May 2013

Reconstruction of northbound US 41 lanes.

Mainline US 41 will have two lanes of traffic in each direction. Expect periodic nighttime lane closures from 7 p.m. to 5 a.m.

- 2 Lake Butte des Morts Causeway**
September 2011 through July 2013

Construction continues on the new northbound lanes and the new northbound structure over the Lake Butte des Morts main channel.

Two lanes of traffic will remain open in both directions, but lanes and shoulders will be narrow; motorists may experience temporary nighttime closures as trucks and equipment move in and out of the work zone.

- 3 WIS 44 Interchange**
April 2013 through November 2013

Replace the southeast wing on the WIS 44 structure over US 41; replace concrete pavement approaches to the WIS 44 structure; install paver bricks and landscaping in the WIS 44 median.

No impact to US 41 traffic, but lane closures on WIS 44 will occur daily when work is being completed in the area. WIS 44 will be down to one lane in each direction on the WIS 44 structure for eight weeks while work is completed on this structure and pavement approaches.

CONSTRUCTION SCHEDULES ARE SUBJECT TO CHANGE.
FOR THE LATEST INFORMATION VISIT US41wisconsin.gov.
THE US 41 PROJECT IS SLATED FOR COMPLETION IN 2017.

*MAP NOT TO SCALE

BROWN 2013-2018 - 2013-2018

Wisconsin Six Year Highway Improvement Programs

May 10, 2013 SNAPSHOT

HWY	COUNTY	PROJECT ID	TITLE/ LIMITS/ WORK TYPE	MILES	COST ESTIMATE RANGE	FISCAL YEAR	WORK TYPE	PROJECT DESCRIPTION
029	BROWN	49870771	CITY OF GREEN BAY GREEN BAY LIF STRUCTURES	0.54	\$1,000,000 - \$1,999,999	2016	MISC	REHABILITATES EXISTING LIFT STRUCTURES WITH RETROFITS OF THE STRUCTURES FOR REMOTE OPERATIONS. GREEN BAY BRIDGES MASON STREET STH 54 B-05-0134, WALNUT ST STH 29 B-05-0269, & MAIN ST B-05-0311.
029	BROWN	92020887	MISC DEPERE - SUAMICO WIS29 RELO US41-CTH J CN RR TRCK WK	0.07	\$100,000 or less	2016	RECST	USH 41 MEGA PROJECT - - THIS IS THE CN TRACK WORK TO ACCOMMODATE THE REMOVAL OF THE RAILROAD CROSSING ON PACKERLAND AND TO THE WEST. THIS PROJECT IS NEEDED ALONG WITH THE DOT GRADING AND BRIDGE/CULVERT WORK DONE UNDER PROJECT 9202-08-79 FOR REMOVING & SUBSEQUENTLY REINSTALLING TRACK FOR THE DURATION OF THE BEAVER DAM CREEK BOX CULVERT REPLACEMENT.
029	BROWN	92021071	RECST SHAWANO-GREEN BAY WCL-CTH J	8.04	\$7,000,000 - \$7,999,999	2015	RESUR	USH 41 MEGA PROJECT - - MILL AND OVERLAY THE WESTBOUND LANES. CONCRETE PATCH AND JOINT REPAIR EASTBOUND LANES.
029	BROWN	92020771	RESUR DEPERE - SUAMICO STH 29 RELOCATION USH 41-CTH J	1.15	\$15,000,000 or greater	2013	RECST	STH 29 MAINLINE (DUCK CREEK - PACKERLAND DR/GTH EB) PROJECT INCLUDES BRIDGES B-05-656 & B-05-0657, RETAINING WALLS R-05-238 & R-05-239, SIGN STRUCTURES S-05-264, S-05-266, S-05-267, S-05-269, S- 05-270, S-05-271, S-05-272, S-05-273
029	BROWN	92000471	RECST SHAWANO - GREEN BAY STH 29 & CTH FF INTERSECTION	1.578	\$15,000,000 or greater	2013	RECST	CONSTRUCT AN INTERCHANGE AT THE CTH FF AND STH 29 INTERSECTION. NEW STRUCTURES B-05- 29/402/403 AND RETAINING WALLS R-5-106/107/108/109
029	BROWN	14810771	RECST MONROE AVENUE, GREEN BAY CASS STREET - MAIN STREET	0.864	\$5,000,000 - \$5,999,999	2014	RECST	RECONSTRUCT THE URBAN STREET INCLUDING NEW STORM SANITARY & WATER SYSTEMS. ADD CAPACITY AT INTERSECTIONS AS FEASIBLE. PROJECT IS LOCATED ON STH 57, STH 54 AND STH 29
			RECST					

HWY	COUNTY	PROJECT ID	TITLE/ LIMITS/ WORK TYPE	MILES	COST ESTIMATE RANGE	FISCAL YEAR	WORK TYPE	PROJECT DESCRIPTION
029	BROWN	92020880	DEPERE - SUAMICO WIS 29 RELOCATION US 41-CTH J RECST	1.23	\$1,000,000 - \$1,999,999	2016	RECST	USH 41 MEGA PROJECT --
029	BROWN	92020877	DEPERE - SUAMICO WIS 29 RELOCATION US 41-CTH J RECST	0.68	\$500,000 - \$749,999	2014	RECST	USH 41 MEGA PROJECT -- SHAWANO AVE LANDSCAPING & BIKE/PEDESTRIAN TRAIL (DUCK CREEK - CTH EB, DOUSMAN ST - TAYLOR ST)
029	BROWN	92020888	DEPERE - SUAMICO WIS 29 RELOCATION US 41-CTH J RECST	0.492	\$250,000 - \$499,999	2013	RECST	SHAWANO AVE LANDSCAPING & BIKE/PEDESTRIAN TRAIL (DUCK CREEK - CTH EB, DOUSMAN ST - TAYLOR ST)
029	BROWN	92000571	SHAWANO - GREEN BAY STH 29 & CTH U INTERSECTION MISC	0.288	\$250,000 - \$499,999	2013	MISC	INTERSECTION MODIFICATION
029	BROWN	92000771	SHAWANO-GREEN BAY STH 29 & CTH VV MISC	0.728	\$750,000 - \$999,999	2013	MISC	J TURN AT CTH VV INTERSECTION
029	BROWN	92020788	DEPERE - SUAMICO STH 29 RELOCATION US 41 - CTH J RECST	0.909	\$100,000 - \$249,999	2013	RECST	WIS 29 FENCING
029	BROWN	41800771	WALNUT STREET BRIDGE WALNUT STREET BRIDGE	0	\$1,000,000 - \$1,999,999	2013	BRRHB	REHAB WALNUT STREET BRIDGE INCLUDING PROGRAMMABLE LOGIC CONTROLLED (PCL). MISCELLANEOUS ELECTRICAL AND MECHANICAL WORK/UP GRADES.
032	BROWN	41901672	ASHLAND AVE., DEPERE & ASHWAUBENON 8TH STREET - LOMBARDI AVENUE BRRPL	0.1	\$1,000,000 - \$1,999,999	2017	BRRPL	REPLACEMENT OF EXISTING STRUCTURES OVER ASHWAUBENON CREEK B-5-16 & 34. WINGWALL REPAIR TO B-5-17 & 35 DUTCHMANS CREEK
032	BROWN	40854271	8TH STREET, CITY OF DEPERE MAIN AVENUE-ASHLAND AVENUE RECST	0.45	\$2,000,000 - \$2,999,999	2017	RECST	RECONSTRUCT THE EXISTING URBAN STREET
032	BROWN	41901671	ASHLAND AVE., DEPERE & ASHWAUBENON 8TH STREET - LOMBARDI AVENUE RESUR	2.31	\$6,000,000 - \$6,999,999	2017	RESUR	RESURFACING ASHLAND AVE

HWY	COUNTY	PROJECT ID	TITLE/ LIMITS/ WORK TYPE	MILES	COST ESTIMATE RANGE	FISCAL YEAR	WORK TYPE	PROJECT DESCRIPTION
032	BROWN	91901371	VILLAGE OF PULASKI GREEN BAY STREET - S. CHASE ROAD RECST	1.35	\$4,000,000 - \$4,999,999	2014	RECST	Replace the underground utilities and reconstruct the urban street.
032	BROWN	40854371	CITY OF DEPERE, STH 32/57 CTH X INTERSECTION	0.04	\$1,000,000 - \$1,999,999	2016	RECST	CONSTRUCTION OF A SINGLE-LANE ROUNDABOUT AT THE INTERSECTION OF STH 32/57 AND CTH X (HERITAGE ROAD) TO REDUCE THE RIGHT ANGLE AND LEFT TURN CRASHES. POSSIBLE HSIP PROJECT
041	BROWN	11303271	RECST GREEN BAY - OCONTO LINEVILLE ROAD - NORFIELD ROAD	4.98	\$13,000,000 - \$13,999,999	2017	RESUR	RESURFACE USH 41, REPLACE THE DECKS OF NB & SB CTH B AND RXR BRIDGES, OVERLAY NORFIELD & HARBOR LIGHTS OVERPASSES.
041	BROWN	11331177	RECST DEPERE - SUAMICO MEMORIAL DRIVE - CTH M	0.18	\$15,000,000 or greater	2013	RECST	
041	BROWN	11331078	RECST DEPERE - SUAMICO MEMORIAL DRIVE - CTH M	0	\$500,000 - \$749,999	2013	RECST	LINEVILLE ROAD INTCHG LIGHTING
041	BROWN	11330687	RECST DEPERE - SUAMICO ORANGE LANE - GLORY ROAD	3.405	\$100,000 - \$249,999	2013	RECST	ORANGE LANE - GLORY ROAD FENCING
041	BROWN	11330971	RECST DEPERE - SUAMICO GLORY ROAD - MORRIS AVENUE	2.936	\$15,000,000 or greater	2014	RECST	Designs capacity expansion from Glory Rd - Morris Ave
041	BROWN	11331178	RECST DEPERE - SUAMICO MEMORIAL DRIVE - CTH M	0.18	\$11,000,000 - \$11,999,999	2013	RECST	
041	BROWN	11331081	RECST DEPERE - SUAMICO MEMORIAL DRIVE - CTH M	1.78	\$15,000,000 or greater	2013	RECST	DUCK CREEK-LINEVILLE ROAD MAINLINE
041	BROWN	11330982	RECST DEPERE - SUAMICO GLORY ROAD - MORRIS AVENUE	3.03	\$250,000 - \$499,999	2016	RECST	USH 41 MEGA PROJECT - -

HWY	COUNTY	PROJECT ID	TITLE/ LIMITS/ WORK TYPE	MILES	COST ESTIMATE RANGE	FISCAL YEAR	WORK TYPE	PROJECT DESCRIPTION
041	BROWN	11330980	DEPERE - SUAMICO GLORY ROAD - MORRIS AVE RECST	0.63	\$250,000 - \$499,999	2016	RECST	USH 41 MEGA PROJECT -- STH 172 INTCHG LANDSCAPING
041	BROWN	11330376	DEPERE - SUAMICO MORRIS AVENUE - MEMORIAL DRIVE RECST	3.25	\$100,000 or less	2016	RECST	USH 41 MEGA PROJECT -- CAPACITY EXPANSION FROM DEPERE-SUAMICO IN BROWN COUNTY ON USH 41 ADDING 2 ADDITIONAL LANES MAKING A 6-LANE FACILITY. ALSO INCLUDES INTERCHANGE
041	BROWN	11331186	DEPERE - SUAMICO MEMORIAL DRIVE - CTH M RECST	0.17	\$1,000,000 - \$1,999,999	2013	RECST	VELP AVE STORMWATER POND
041	BROWN	11331180	DEPERE - SUAMICO MEMORIAL DRIVE - CTH M RECST	0.99	\$100,000 - \$249,999	2016	RECST	USH 41 MEGA PROJECT -- USH 41 FENCING (MEMORIAL DR - LINEVILLE RD)
041	BROWN	11330473	DEPERE - SUAMICO MORRIS AVE - MEMORIAL DRIVE RECST	13.93	\$100,000 - \$249,999	2015	RECST	USH 41 MEGA PROJECT -- STH 29 SYSTEM INTERCHANGE LANDSCAPING
041	BROWN	11331071	DEPERE - SUAMICO MEMORIAL DRIVE - CTH M RECST	1.58	\$15,000,000 or greater	2015	RECST	USH 41 MEGA PROJECT -- VELP AVE - DUCK CREEK MAINLINE/IH 43 INTCHG
041	BROWN	11505471	GREEN BAY - OCONTO CTH B INTERCHANGE MISC	0.1	\$1,000,000 - \$1,999,999	2017	MISC	Operational improvements to the CTH B interchange.
041	BROWN	11331171	DEPERE - SUAMICO MEMORIAL DRIVE - CTH M RECST		\$12,000,000 - \$12,999,999	2013	RECST	
041	BROWN	11331176	DEPERE - SUAMICO MEMORIAL DRIVE - CTH M RECST	0.18	\$13,000,000 - \$13,999,999	2013	RECST	
041	BROWN	11331074	DEPERE - SUAMICO MEMORIAL DRIVE - CTH M B05/129 RECST	0.1	\$3,000,000 - \$3,999,999	2013	RECST	DESIGNS CAPACITY EXPANSION FROM MEMORIAL DR.- CTH M

HWY	COUNTY	PROJECT ID	TITLE/ LIMITS/ WORK TYPE	MILES	COST ESTIMATE RANGE	FISCAL YEAR	WORK TYPE	PROJECT DESCRIPTION
041	BROWN	11330688	DEPERE - SUAMICO ORANGE LANE - GLORY ROAD RECST	0.13	\$500,000 - \$749,999	2013	RECST	
041	BROWN	11331175	DEPERE - SUAMICO MEMORIAL DRIVE - CTH M RECST	0.13	\$6,000,000 - \$6,999,999	2013	RECST	BEAVER DAM CREEK BOX CULVERT & CREEK REALIGNMENT, OLD STRUCTURE B-05-099. NEW STRUCTURE B-05-0693
041	BROWN	11331174	DEPERE - SUAMICO MEMORIAL DRIVE - CTH M RECST	0.386	\$15,000,000 or greater	2014	RECST	USH 41 MEGA PROJECT - - IH 43 EARLY STRUCTURES/EARLY FILL.
041	BROWN	11304471	APPLETON - GREEN BAY CTH J-ORANGE LANE RESUR	12.44	\$15,000,000 or greater	2017	RESUR	RESURFACE USH 41. DECK OVERLAYS AND SURFACE REPAIR.
041	BROWN	11331181	DEPERE - SUAMICO MEMORIAL DRIVE - CTH M RECST	0.18	\$100,000 - \$249,999	2016	RECST	USH 41 MEGA PROJECT - - IH 43 FENCING (MILITARY- ATKINSON)
041	BROWN	11331077	DEPERE - SUAMICO MEMORIAL DR - CTH M RECST	0.69	\$15,000,000 or greater	2015	RECST	USH 41 MEGA PROJECT - -
041	BROWN	11330371	DEPERE - SUAMICO MORRIS AVENUE - MEMORIAL DRIVE RECST	1.3	\$15,000,000 or greater	2013	RECST	HSIP PROJECT 3B MULTIPLE BRIDGES, BOX CULVERT, SIGN BRIDGES, RETAINING WALLS. CAPACITY EXPANSION FROM DEPERE - SUAMICO IN BROWN COUNTY ON USH 41 ADDING 2 ADDITIONAL LANES MAKING A 6-LANE FACILITY. ALSO INCLUDES INTERCHANGE UPGRADES AT VARIOUS LOCATIONS.
041	BROWN	11330373	DEPERE - SUAMICO MORRIS AVENUE - MEMORIAL DRIVE RECST	0.817	\$15,000,000 or greater	2013	RECST	NEW STRUCTURES B-05-658, B-05-660, S-05-174, S-05- 175, S05-205, R-05-060, R-05-061, R-05-244STR2, & R-05- 245. CAPACITY EXPANSION FROM DEPERE - SUAMICO IN BROWN COUNTY ON USH 41 ADDING 2 ADDITIONAL LANES MAKING A 6-LANE FACILITY. ALSO INCLUDES INTERCHANGE UPGRADES AT VARIOUS LOCATIONS.
041	BROWN	11330377	DEPERE - SUAMICO MORRIS AVENUE- MEMORIAL DRIVE RECST	1.286	\$15,000,000 or greater	2014	RECST	CAPACITY EXPANSION FROM DEPERE-SUAMICO IN BROWN COUNTY TO USH 41 ADDING 2 ADDITIONAL LANES MAKING A 6-LANE FACILITY. ALSO INCLUDES INTERCHANGE UPGRADES AT VARIOUS LOCATIONS.

HWY	COUNTY	PROJECT ID	TITLE/ LIMITS/ WORK TYPE	MILES	COST ESTIMATE RANGE	FISCAL YEAR	WORK TYPE	PROJECT DESCRIPTION
043	BROWN	12270871	MANITOWOC - GREEN BAY STH 96 - WEBSTER AVENUE RESUR	16.97	\$15,000,000 or greater	2017	RESUR	RESURFACE IH 43. NUMEROUS BRIDGE DECK OVERLAYS.
054	BROWN	92100971	STH 172 - CITY OF GREEN BAY STH 172 - PLEASANT LANE RESUR	2.35	\$750,000 - \$999,999	2013	RESUR	Mill and overlay the asphaltic surface.
054	BROWN	92101371	GREEN BAY-LUXEMBURG STH54/57 INTERCHANGE-ECL PVRPL	6.06	\$5,000,000 - \$5,999,999	2017	PVRPL	PAVEMENT REPLACEMENT LEVEL IMPROVEMENT; PULVERIZE AND OVERLAY
054	BROWN	92101471	MASON STREET BRIDGE MASON STREET BRIDGE BRRHB	0	\$3,000,000 - \$3,999,999	2013	BRRHB	REHAB MASON STREET BRIDGE INCLUDING PROGRAMABLE LOGIC CONTROLLED (PCL). MISCELLANEOUS ELECTRICAL AND MECHANICAL WORK/UPGRADES AND REPLACEMENT OF EXISTING TRAFFIC BARRIERS.
054	KEWAUNEE	14802271	STH 57 - CASCO STUMP ROAD - VALLEY ROAD RESUR	4.85	\$2,000,000 - \$2,999,999	2014	RESUR	Resurface the asphaltic pavement.
057	BROWN	40853871	VILLAGE OF ALLOUEZ, RIVERSIDE DRIVE S VILLAGE LIMITS - N VILLAGE LIMITS RECST	2.89	\$9,000,000 - \$9,999,999	2018	RECST	RECONSTRUCT THE EXISTING URBAN STREET
057	BROWN	40853971	C DEPERE, BROADWAY STREET RANDALL AVENUE-NCPL RECST	0.46	\$1,000,000 - \$1,999,999	2018	RECST	RECONSTRUCT THE EXISTING URBAN STREET
096	BROWN	40752571	WRIGHTSTOWN - GREENLEAF E CPL WRIGHTSTOWN - OLD 57 ROAD RESUR	2.104	\$1,000,000 - \$1,999,999	2013	RESUR	Mill and resurface the existing asphalt. Pave 5 ft. of the shoulder and fix frost heave locations.
096	BROWN	40752871	VILLAGE OF WRIGHTSTOWN FOX RIVER BRIDGE B05-381 BRRPL	0.195	\$15,000,000 or greater	2015	BRRPL	NEW BRIDGE STRUCTURE OVER THE FOX RIVER
096	BROWN	40752771	TOWN OF WRIGHTSTOWN OLD 57 ROAD - BRECKENRIDGE FALLS RD RECST	1	\$2,000,000 - \$2,999,999	2014	RECST	Reconstruct the existing urban street.

HWY	COUNTY	PROJECT ID	TITLE/ LIMITS/ WORK TYPE	MILES	COST ESTIMATE RANGE	FISCAL YEAR	WORK TYPE	PROJECT DESCRIPTION
096	BROWN	40951071	HIGH ST. VILLAGE OF WRIGHTSTOWN TURNER ST. - SHANTY ROAD RECST	0.72	\$2,000,000 - \$2,999,999	2014	RECST	URBAN RECONSTRUCT FROM TURNER STREET - SHANTY ROAD.
096	BROWN	40951072	HIGH ST. VILLAGE OF WRIGHTSTOWN FOX RIVER - SHANTY ROAD	0.93	\$500,000 - \$749,999	2015	MISC	URBAN RECONSTRUCT FROM THE FOX RIVER TO SHANTY ROAD IN THE VILLAGE OF WRIGHTSTOWN. TRANSFER OF HIGH STREET AFTER FOX RIVER BRIDGE CONSTRUCTION ON NEW LOCATION
160	BROWN	95320371	MISC VILLAGE OF PULASKI HIGHVIEW ST - SAINT AUGUSTINE ST RECST	0.63	\$1,000,000 - \$1,999,999	2013	RECST	Replace the underground utilities, remove the existing pavement structure and reconstruct the urban street.
AAA	BROWN	11330976	DEPERE - SUAMICO GLORY ROAD - MORRIS AVENUE RECST	0.564	\$6,000,000 - \$6,999,999	2014	RECST	DESIGNS CAPACITY EXPANSION FROM GLORY RD - MORRIS AVE
HS	BROWN	11331075	DEPERE - SUAMICO MEMORIAL DRIVE - CTH M RECST	0.659	\$6,000,000 - \$6,999,999	2015	RECST	USH 41 MEGA PROJECT - - DESIGNS CAPACITY EXPANSION FROM MEMORIAL DR.-CTH M
HWY	BROWN	92020878	DEPERE - SUAMICO STH 29 RELOCATION US 41-CTH J RECST	0.363	\$100,000 - \$249,999	2013	RECST	PAMPERIN PARK TRAIL PAVING AND LANDSCAPING. REDESIGN OF STH 29 TO ACCOMODATE FREEWAY CONVERSION FROM CTH J - USH 41.
M	BROWN	11331072	DEPERE - SUAMICO MEMORIAL DRIVE - CTH M RECST	0.832	\$12,000,000 - \$12,999,999	2013	RECST	Designs capacity expansion from MEMORIAL DR.-CTH M
STR	BROWN	11330974	DEPERE - SUAMICO GLORY RD - MORRIS AVE RECST	0.095	\$3,000,000 - \$3,999,999	2014	RECST	FULL RECONSTRUCTION OF THE HANSEN RD BRIDGE OVER 41. ORIGINAL BRIDGE NUMBER B-5-109- REPLACEMENT BRIDGE NUMBER B-5-611
STR	BROWN	11330388	DEPERE - SUAMICO MORRIS AVE - MEMORIAL DRIVE RECST	0.11	\$500,000 - \$749,999	2013	RECST	LOMBARDI AVE/ARGONNE ST INTERSECTION
STR	BROWN	92020873	DEPERE - SUAMICO WIS 29 RELOCATION US 41-CTH J RECST		\$100,000 - \$249,999	2013	RECST	PAMPERIN PARK ACCESS ROAD OBLITERATION, SHAWANO AVE ELMHURST AVE CONNECTION. REDESIGN OF STH 29 TO ACCOMODATE FREEWAY CONVERSION FROM CTH J-USH41

HWY	COUNTY	PROJECT ID	TITLE/ LIMITS/ WORK TYPE	MILES	COST ESTIMATE RANGE	FISCAL YEAR	WORK TYPE	PROJECT DESCRIPTION
STR	BROWN	11331080	DEPERE - SUAMICO MEMORIAL DRIVE - CTH M RECST	0.32	\$250,000 - \$499,999	2013	RECST	ISLAND COURT CUL-DE-SAC AND LONE GROVE CUL-DE-SAC.
STR	BROWN	92020876	DEPERE - SUAMICO WIS 29 RELOCATION US 41-CTH J RECST	0.069	\$100,000 - \$249,999	2013	RECST	SOUTH MEMORIAL DR ACCESS TO PARKSIDE CT REDESIGN PF STJ 29 TO ACCOMMODATE FREEWAY CONVERSION FROM CTH J- USH 41
STR	BROWN	92020872	DEPERE - SUAMICO WIS 29 RELOCATION US 41-CTH J RECST	0.174	\$100,000 - \$249,999	2014	RECST	USH 41 MEGA PROJECT - - REDESIGN OF STH 29 TO ACCOMMODATE FREEWAY CONVERSION FROM CTH J - USH 41
STR	BROWN	11330480	DEPERE - SUAMICO MORRIS AVE - MEMORIAL DRIVE RECST	0.117	\$250,000 - \$499,999	2013	RECST	NINTH STREET RECONSTRUCTION
STR	BROWN	92020782	DEPERE - SUAMICO WIS 29 RELOCATION US 41- CTH J RECST	1.32	\$250,000 - \$499,999	2014	RECST	USH 41 MEGA PROJECT - - REDESIGN OF STH 29 TO ACCOMMODATE FREEWAY CONVERSION FROM CTH J - USH 41
SYS	BROWN	11331172	DEPERE - SUAMICO MEMORIAL DRIVE - CTH M RECST	1.02	\$100,000 or less	2016	RECST	USH 41 MEGA PROJECT - - E DEERFIELD AND HURLBUT ST CUL-DE-SAC'S & WPS ACCESS ROAD.
SYS	BROWN	11331173	DEPERE - SUAMICO MEMORIAL DRIVE - CTH M RECST		\$100,000 or less	2016	RECST	USH 41 MEGA PROJECT - -

WEDC Regional Economic Development Revolving Loan (RLF) Project

May 2013



Current Situation - Statewide

- 130 individual RLFs statewide
- \$138 million available, \$30 million loaned out
- Individual RLFs average < 2 loans per year
- 76% of available funds not leveraged
- Cumbersome federal CDGB regulations
 - Low and Moderate Income (LMI) monitoring requirements
 - Davis-Bacon federal wage standard monitoring compliance for construction related projects

WEDC Proposal

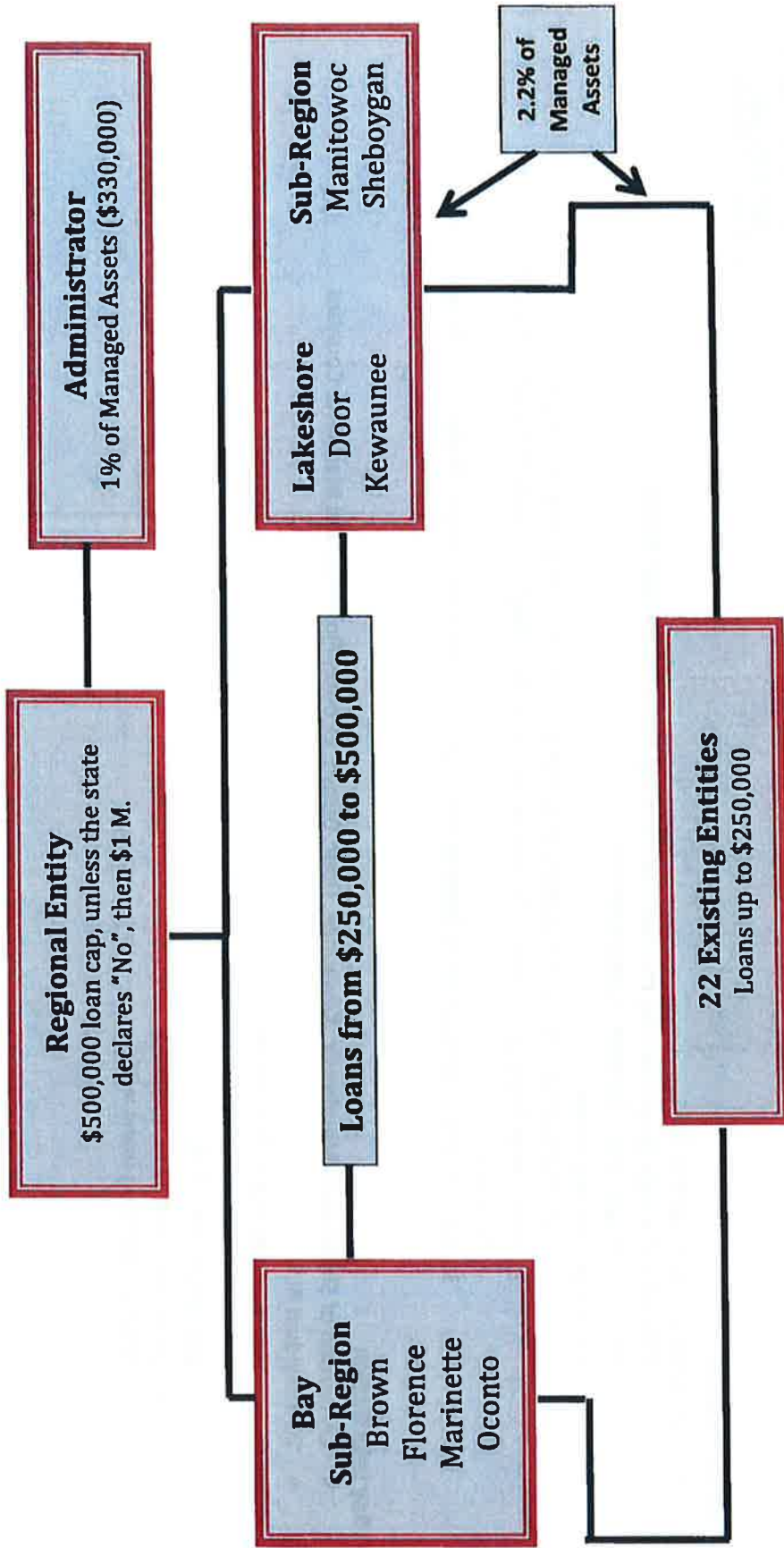
- Consolidate into 8 regional RLFs
 - Regions aligned geographically by the Regional Planning Commission boundaries
 - Initiative begun under the Doyle Administration
 - 3 regions currently active
 1. Regional Business Fund, Inc. (Baron, Chippewa, Clark, Eau Claire, Polk, St. Croix)
 2. Northwest Regional Economic Development Fund, Inc. (Bayfield, Burnett, Douglas, Iron, Price, Rusk, Sawyer)
 3. Central Wisconsin Economic Development Fund, Inc. (Adams, Lincoln, Marathon, Portage, Wood)

Bay Lake Region

- Comprised of Sheboygan, Manitowoc, Kewaunee, Door, Brown, Oconto, Florence, and Marinette Counties
- 22 individual RLFs
 - Aggregate assets = \$33 million
 - Cash on-hand: \$11.8 million
 - Utilization rate: 71%
 - Expected monthly repayments: \$530 K
 - Total outstanding loans = 266

WEDC Regional Economic Development Revolving Loan (RLF) Project

May 2013



Benefits

- Eliminate onerous federal CDGB requirements
- Expand access to capital
- Expand loan size beyond current \$250 K limitation
- New loan opportunities
 - Downtown Facade/Historic Reinvestment
 - Microloans
 - Technology Enterprise Fund

