

October 18, 2006

TO THE MEMBERS OF THE BROWN COUNTY BOARD OF SUPERVISORS

Ladies and Gentlemen:

The PLANNING, DEVELOPMENT & TRANSPORTATION COMMITTEE met in regular session on September 25, 2006, and recommends the following motions.

1. Review minutes of:
 - a) Planning Commission, Board of Directors (8/2/06).
 - b) Harbor Commission (8/7/06)Approve items a-b.
2. Port & Solid Waste - **Closed Session** – Pursuant to Wisconsin State Statute 19.85 (1)(g): Conferring with legal counsel and 19.85 (1)(e): Deliberating or negotiating the purchase of public properties on the matters pertaining to Brown County Waste Transfer Station lawsuit by the Village of Hobart and draft settlement agreement. Enter into closed session.
3. Port & Solid Waste - **Return to Open Session** – Village of Hobart/Brown County Waste Transfer Station Lawsuit Settlement Agreement and Material Release – Request for Approval.
 - a) Return to regular order of business.
 - b) Approve the Settlement Agreement within the parameters outlined and with editorial changes.
4. Port & Solid Waste - Budget Status Financial Report for August 31, 2006. Receive & place on file.
5. Port & Solid Waste - Update on single stream recycling trucks. Receive & place on file.
6. Port & Solid Waste - 2007 Household Hazardous Waste Grant – Request for Approval. Receive & place on file.
7. Port & Solid Waste - Bid Tab (see attached) – Landfill Gas Flow Meter & Gas System at the East & West Landfills Project #1221 – Request to approve low bidder – P. J. Kortens & Co., for \$37,640. Approve.
8. Airport - News & Gifts RFP. Receive & place on file.
9. Airport - Director's report. Receive & place on file.

5

10. Airport - Budget Status Financial Report for August 31, 2006. Receive & place on file.
11. Planning Commission - Communication from Supervisor Bernie Erickson re: Request for staff updates on recommendations and development options on the excess land east of the current jail site. (Standing item for every committee meeting.) Receive & place on file.
12. Planning Commission - Update re: Environmental Analysis for the Southern bridge & arterial. Receive & place on file.
13. Planning Commission - Budget Status Financial Report (August 31, 2006). Receive & place on file.
14. UW-Extension - Permission to accept \$100 donation to the 4-H Program from Attorney Ken Calewarts. Committee accepted.
15. UW-Extension - Permission to accept \$1,645 from Brown County Breakfast on the Farm Committee for printing and copying services. Committee accepted.
16. UW-Extension - Permission to accept \$2,185 from Outagamie County UW-Extension for printing of dairy binders. Committee accepted.
17. UW-Extension - Permission to accept \$2,600 (\$1,500 from Prevea, \$100 from Oneida Tribe, and \$1,000 from Bellin) for the Wisconsin Nutrition & Physical Activity State Plan. Committee accepted.
18. UW-Extension Director's report. Receive & place on file.
19. Highway - Communication from Supervisor Bill Clancy re: Hazard on CTH "PP" & CTH "Z". Receive & place on file.
20. Highway - Update from two months ago from Highway Waste Management and road damage in the area of the Towns of Wayside & Morrison. Receive & place on file.
21. Highway - Update on overhead lane direction on Lombardi & Oneida Streets Receive & place on file.
22. Highway - Discussion of paving Lombardi Avenue from Ridge Road to Highway 41 in 2007. Refer to staff to come back with an update after a meeting is held with Brown County Highway, the Village of Ashwaubenon, and the City of Green Bay.

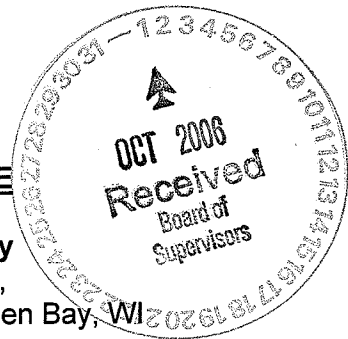
23. Highway - Letter to Waste Management re: CTH "G" from CTH "Z" to the South County Line – Requesting the use of alternate routes due to the deterioration of the roadway from heavy truck traffic. Receive & place on file.
24. Highway - Budget Status Financial Report. Receive & place on file.
25. Highway - Commissioner's report. Receive & place on file.
26. Budget Status Financial Reports for Zoning, Register of Deeds, & Property Listing. Receive & place on file.
27. Audit of bills. Approve payment of bills.

Approved by:

COUNTY EXECUTIVE

Date

**PROCEEDINGS OF THE BROWN COUNTY
PLANNING, DEVELOPMENT & TRANSPORTATION COMMITTEE**



Pursuant to Section 18.94 Wis. Stats., a regular meeting of the **Brown County Planning, Development & Transportation Committee** was held on Monday, September 25, 2006 in Room 161 - UW-Extension, 1150 Bellevue Street, Green Bay, WI

Present: Norb Dantinne, Bernie Erickson, Mike Fleck, Dave Kaster, John VanderLeest
Also Present: Chuck Larscheid, Tom Miller, Chuck Lamine, Cole Runge, Brian Lamers, Judy Knudsen, Supervisors Nubs DeCleene, Tom Lund

Land Conservation Fall Tour prior to Land Conservation Sub-Committee Meeting.
This meeting will follow Land Conservation Sub-Committee meeting at approximately 7:30 p.m.

1. **Call Meeting to Order:**
The meeting was called to order by Chairman Bernie Erickson at 7:57 p.m.

2. **Approve/Modify Agenda:**
Items taken out of order, although shown in proper format here.

Motion made by Supervisor Dantinne and seconded by Supervisor VanderLeest to approve the agenda as amended.

MOTION APPROVED UNANIMOUSLY

3. **Approve/Modify Minutes of Planning, Development & Transportation Committee of August 28, 2006:**

Motion made by Supervisor Kaster and seconded by Supervisor VanderLeest to approve as corrected.

MOTION APPROVED UNANIMOUSLY

4. **Review Minutes of:**
a. **Planning Commission Board of Directors (8/2/06)**
b. **Harbor Commission (8/7/06)**

Motion made by Supervisor Fleck and seconded by Supervisor Dantinne to approve 4a & 4b. MOTION APPROVED UNANIMOUSLY

Port & Solid Waste:

5. **Closed Session pursuant to Wisconsin State Statute 18.85 (1)(g): Conferring with legal counsel and 18.85 (1)(e): Deliberating or negotiating the purchase of public properties on the matters pertaining to Brown County Waste Transfer Station lawsuit by the Village of Hobart and Draft Settlement Agreement:**

Motion made by Supervisor Erickson and seconded by Supervisor Fleck to enter into closed session. Roll Call: All Present
MOTION APPROVED UNANIMOUSLY

6. **Return to Open Session – Village of Hobart/Brown County Waste Transfer Station Lawsuit Settlement Agreement and Material Release – Request for Approval:**

Motion made by Supervisor Fleck and seconded by Supervisor Kaster to return to regular order of business. Roll Call: All Present
MOTION APPROVED UNANIMOUSLY

Chuck Larscheid announced that the Solid Waste Board approved the draft settlement agreement with conditions. Supervisor VanderLeest pointed out that it is time for the County to move on, stating it is preferable to settle the dispute rather than going through the court process.

Motion made by Supervisor Fleck and seconded by Supervisor Kaster to approve the Settlement Agreement within the parameters outlined and with editorial changes. MOTION APPROVED UNANIMOUSLY

7. **Budget Status Financial Report for 8/31/06 (to be distributed at meeting):**

Motion made by Supervisor VanderLeest and seconded by Supervisor Dantine to receive and place on file. MOTION APPROVED UNANIMOUSLY

8. **Update on Single Stream Recycling Trucks:**

Mr. Larscheid reported that Brown County presently has a dual stream facility, however, is researching a single stream option. At this time Ashwaubenon has purchased trucks for automated pickup, and DePere is interested in doing the same. Supervisor DeCleene indicated that Ashwaubenon would like a three to five year solution. Larscheid stated his department will be discussing with Outagamie and Winnebago their systems. It is possible a larger facility will need to be built. Mr. Larscheid explained that research shows that a single stream facility will cost more to build than a dual stream, however, there would be savings derived from pickup.

Motion made by Supervisor VanderLeest and seconded by Supervisor Fleck to receive and place on file. MOTION APPROVED UNANIMOUSLY

9. **2007 Household Hazardous Waste Grant – Request for Approval:**

Motion made by Supervisor VanderLeest and seconded by Supervisor Dantine to receive and place on file. MOTION APPROVED UNANIMOUSLY

10. **Bid Tab – Landfill Gas Flow Meter & Gas System at the East & West Landfills Project #1221 – Request to approve low bidder – P.J. Kortens & Co., for \$37,640:**

Motion made by Supervisor VanderLeest and seconded by Supervisor Fleck to approve. MOTION APPROVED UNANIMOUSLY

#25 taken at this point in agenda.

Airport:

11. News & Gifts RFP:

Airport Director, Tom Miller, reported that two responses were received to the RFP sent out for operation of the news and gift concession at the airport. Responses were reviewed by five committee members, three from the airport staff, the County Purchasing Manager, and the Airport Director from Dane County. The scores were consolidated and it was determined by the committee that Air Host received the highest score at 83.8 points, while the present concessionaires, DMH, or Jack & Donna Hill, had a total of 71.6 points. The proposals were graded in eight different categories. A decision was made to make the award to Air Host.

Jack & Donna Hill were present, however, did not ask to speak.

Motion made by Supervisor VanderLeest and seconded by Supervisor Kaster to receive and place on file. MOTION APPROVED UNANIMOUSLY

12. Director's Report:

The following report was given by Mr. Miller:

- TSA has announced that they will allow passengers to carry on board the aircraft small amounts of liquids, i.e. 3 ounces or less (travel size items), as long as it can be put in a one quart baggie. Also allowed will be bottled, liquid items that are purchased in the secure area of the airport.
- Passenger traffic continues to rise on a positive note, although it has started to "flatten out". Miller attributes this to the state of the economy.
- If the DNR approves an incinerator to be installed at the airport that is USDA approved, there is a possibility that U.S. Customs will allow international flights from Mexico to fly directly to Green Bay.
- Passports will be required in 2007 for anyone leaving the U.S.

Miller read an e-mail from Tom Young of Data Systems International in Sturgeon Bay, stating that the Green Bay airport is "by far the cleanest and friendliest he has been in".

Motion made by Supervisor VanderLeest and seconded by Supervisor Fleck to receive and place on file. MOTION APPROVED UNANIMOUSLY

13. Budget Status Financial Report for 7/31/06:

Mr. Miller indicated there is nothing out of line in the budget and he predicts to be under budget in expenses, and over budget in income at the end of the year.

Motion made by Supervisor VanderLeest and seconded by Supervisor Dantine to receive and place on file. MOTION APPROVED UNANIMOUSLY

Planning Commission:

- 14. Communication from Supervisor Bernie Erickson re: request for staff updates on recommendations and development options on the excess land east of the current jail site. (Standing item for every committee meeting: Handout**

Chuck Lamine distributed an update regarding the excess land east of the jail site (attached). He reported that he has met with the DNR forester, along with Doug Hartman of the Parks Department. It was agreed that the tree plantation should be thinned and the DNR has agreed to flag the trees and develop a management plan. Revenue of \$3,000 to \$4,000 is projected.

Lamine also reported that Green Bay would like to purchase 3 acres next to Lake Largo Drive for a storm water management pond. An appraisal has been requested. In addition, a field visit was made to identify environmentally sensitive lands. Photographs were taken for a future RFP.

Motion made by Supervisor Dantine and seconded by Supervisor Fleck to receive and place on file. MOTION APPROVED UNANIMOUSLY

15. **Update re: Environmental Analysis for the Southern Bridge & Arterial:**
Cole Runge distributed a copy of the presentation given to the Planning Commission on 9/19/06 (available in County Board & County Clerk Office). He explained the process that will be necessary in order to receive Federal and State dollars to eventually build a southern bridge and connecting arterial street system.

Motion made by Supervisor VanderLeest and seconded by Supervisor Kaster to receive and place on file. MOTION APPROVED UNANIMOUSLY

16. **Budget Status Financial Report for 8/31/06:**

Motion made by Supervisor VanderLeest and seconded by Supervisor Kaster to receive and place on file. MOTION APPROVED UNANIMOUSLY

UW-Extension:

17. **Permission to accept \$100 donation to the 4-H Program from Attorney Ken Calewarts:**
18. **Permission to accept \$1,645 from Brown County Breakfast on the Farm Committee for printing and copying services:**
19. **Permission to accept \$1,285 from Outagamie County UW-Extension for printing or dairy binders:**
20. **Permission to accept \$2,600 (\$1,600 from Prevea; \$100 from Oneida Tribe; and \$1,000 from Bellin) for the Wisconsin Nutrition & Physical Activity State Plan:**

Motion made by Supervisor Dantine and seconded by Supervisor VanderLeest to accept 17, 18, 19, & 20. MOTION APPROVED UNANIMOUSLY

21. **Director's Report:**
Judy Knudsen distributed the monthly budget, stating it is on track (attached).

Motion made by Supervisor VanderLeest and seconded by Supervisor Dantine to receive and place on file. MOTION APPROVED UNANIMOUSLY

Highway:

22. Communication from Supervisor Bill Clancy re: hazard on CTH "PP" & CTH "Z":

A map of the area in question was distributed, in addition to accident reports from the Sheriff's Department (attached). Supervisor Clancy, and the Town of Holland, are concerned that a dwelling on this corner encroaches upon the visibility of traffic. Brian Lamers pointed out there was a fatality in 2004, however, it was on the opposite intersection and had nothing to do with the existing house. An additional three accidents have occurred, however, none since 1997. At this time, Mr. Lamers would not recommend any improvements, nor County purchase of the property.

Motion made by Supervisor VanderLeest and seconded by Supervisor Dantine to receive and place on file. MOTION APPROVED UNANIMOUSLY

23. Update from two months ago from Highway Waste Management and Road Damage in the area of the Town of Wayside & Morrison:

Pictures of the road in question were distributed (attached). Mr. Lamers pointed out approximately ½ mile of ruts in the road. Total replacement would cost \$30,000. It is his opinion the road is not a major problem at this time.

Motion made by Supervisor VanderLeest and seconded by Supervisor Dantine to receive and place on file. MOTION APPROVED UNANIMOUSLY

24. Update on Overhead Lane Direction on Lombardi & Oneida Streets;
Mr. Lamers reported that Bodart Electric called in locates on Friday, 9/22/06. He expects bases to be installed this week and the remainder when materials are received.

Motion made by Supervisor VanderLeest and seconded by Supervisor Kaster to receive and place on file. MOTION APPROVED UNANIMOUSLY

25. Discussion of paving Lombardi Avenue from Ridge Road to Highway 41 in 2007:

Supervisor DeCleene expressed concerns with the construction schedule in the Lombardi Avenue/Ridge Road/Highway 41 area, stating completion is substantial to the Village of Ashwaubenon. A construction schedule was distributed (attached). DeCleene stated it is his understanding Brown County plans to bid on the work in this area and their time table may be different than regular labor/construction companies as they have a four day work week, and may not have the equipment or capabilities to maintain a crucial time schedule.

Brian Lamers of the Highway Department stated he plans to meet with the City of Green Bay and with Ashwaubenon to discuss this issue. The County would look at pulling up the concrete and crushing it on site, the concrete work, curb and gutter, and storm sewer would be bid out. In addition, he pointed out that the cost share is 50% Brown County, 25% Ashwaubenon, and 25% Green Bay, that it is a Brown County Highway project, with no federal or state funding.

51

Motion made by Supervisor VanderLeest and seconded by Supervisor Dantine to refer to staff to come back with an update after a meeting is held with Brown County Highway, the Village of Ashwaubenon, and the City of Green Bay. MOTION APPROVED UNANIMOUSLY

26. **Letter to Waste Management re: CTH "G" from CTH "Z" to the South County Line – requesting the use of alternate routes due to the deterioration of the roadway from heavy truck traffic:**

A letter from Mr. Lamers to Waste Management included in packets was reviewed. Mr. Lamers indicated that CTH G, from CTH Z to the South County Line, is deteriorating due to heavy truck traffic. The road is not planned for improvement until 2011. In order to preserve the road, the County requested that Waste Management look at an alternative route.

A response from Waste Management was distributed (attached).

Motion made by Supervisor VanderLeest and seconded by Supervisor Fleck to receive and place on file. MOTION APPROVED UNANIMOUSLY

27. **Budget Status Financial Report:**

Motion made by Supervisor VanderLeest and seconded by Supervisor Fleck to receive and place on file. MOTION APPROVED UNANIMOUSLY

28. **Commissioner's Report:**

Mr. Lamers reported that all projects on course.

Motion made by Supervisor VanderLeest and seconded by Supervisor Dantine to receive and place on file. MOTION APPROVED UNANIMOUSLY

Zoning (Budget Status Financial Report for 7/31/06 attached. No other agenda items)

Register of Deeds (Budget Status Financial Report for 7/31/06 attached. No other agenda items)

Property Listing (Budget Status Financial Report for 7/31/06 attached. No other agenda items)

Land Information Office (No agenda items)

Motion made by Supervisor Fleck and seconded by Supervisor Dantine to receive and place on file the above Budget Status Financial Reports for August 2006. MOTION APPROVED UNANIMOUSLY

Other:

29. **Audit of Bills:**

Motion made by Supervisor VanderLeest and seconded by Supervisor Kaster to approve payment of bills. MOTION APPROVED UNANIMOUSLY

6

30. **Such Other Matters as Authorized by Law:**
None

**Motion made by Supervisor Dantine and seconded by Supervisor Kaster
to adjourn at 9:50 p.m. MOTION APPROVED UNANIMOUSLY**

Respectfully submitted,

Rae G. Knippel
Recording Secretary

61

Brown County



305 E. WALNUT STREET, ROOM 320
P.O. BOX 23600
GREEN BAY, WISCONSIN 54305-3600

CHUCK LAMINE, AICP

PHONE (920) 448-6480 FAX (920) 448-4487
WEB SITE www.co.brown.wi.us/planning

PLANNING DIRECTOR

MEMORANDUM

DATE: September 25, 2006

TO: Planning, Development & Transportation Committee

FROM: Chuck Lamine *Chuck Lamine*

RE: Update on Recommendations and Development Options on Excess Land East of the Current Jail Site

Since the August 28, 2006, meeting of the Planning, Development and Transportation Committee, I have completed the following activities regarding development options on excess county owned land east of the current jail site.

- Met on-site with a DNR Forester and Assistant Park Director Doug Hartman to view red pine plantation on County Farm property. We discussed a process for DNR assistance in developing a management plan for the health of the trees in the plantation and identifying the trees to be harvested from the site. This information would then be used to solicit bids for harvesting the plantation based on this management plan. It was estimated that the first yield of trees would result in approximately \$4,000 in revenue. It is anticipated that a sale of timber could be completed in the spring of 2007.
- Met with representatives of the City of Green Bay Public Works Department regarding their plans to purchase approximately three acres of County Farm land from Brown County to construct a regional stormwater pond to serve approximately 64 acres of land including the southeastern portion of the County Farm property and land to the east of Lake Largo Drive.
- Field visited the site to identify environmentally sensitive lands and to take digital photographs of the land to be used in the request for proposals to purchase and develop the County Farm site.
- Continued to research guidelines for requests for proposals and model requests for proposals from communities such as Dunstable, Massachusetts for a mixed use development.
- Continued to research smart growth principles to be considered for the request for proposals.

DRAFT MINUTES

**Environmental Study Scoping Meeting for Transportation Improvements in
the
Southern Portion of the Green Bay Metropolitan Area
September 19, 2006
Green Bay Metro Transportation Center
901 University Avenue
Green Bay, Wisconsin
10:00 a.m.**

ATTENDEES:

Name	Representing	Name	Representing
Jeff Agee-Aguayo	Bay Lake RPC	Tom Miller	BC Airport staff
Leakhena Au	USFWS	Bill Patzke	City of De Pere
Jeanette Cavanaugh	WisDOT NE Region	Angela Pierce	Bay Lake RPC
Lisa Conard	BC Planning Staff	Cole Runge	BC Planning staff
Scott Brosteau	Mead & Hunt	Peter Schleinz	BC Planning staff
Wendy Braun	WisDOT Madison	Ray Smith	BC Highway staff
Sarah Burdette	Town of Ledgeview	Michael Soletski	BCPC Board
Mike Fleck	BC Supervisor	Al Stranz	WDNR
Johnny Gerbitz	Federal Highway	Ray Taucher	BCPC Board
Colleen Harris	WisDOT NE Region	Scott Thoresen	City of De Pere
Dave Kaster	BC Supervisor	Ken Van De Hei	Town of Lawrence
Ed Kazik	BCPC Board	Jeff Van Straten	Town of Ledgeview
Brian Lamers	BC Highway staff	Rob Wagner	WisDOT NE Region
Chuck Lamine	BC Planning staff	Mayor Mike Walsh	City of De Pere
Rebecca Meert	BC Transportation Sub.	Brett Wallace	WisDOT NE Region

C. Runge opened the meeting at 10:00 a.m.

1. Introductions.

Introductions were made.

2. Presentation and discussion about the project's purpose and need.

C. Runge presented a PowerPoint entitled *Environmental Study Scoping Meeting for Transportation Improvements in the Southern Portion of the Green Bay Metropolitan Area*, by Brown County Planning Commission.

C. Runge explained that the purpose of the project is to identify the most appropriate method of addressing transportation demand that will be generated by the planned development in southern portion of the metropolitan area.

C. Runge displayed a map illustrating land use in the southern metropolitan area in 2004 and a map illustrating planned land use for 2025. A significant amount of residential, commercial, and industrial growth is expected to occur in this area between 2004 to 2025.

C. Runge stated that traffic projections, completed for 2020 during the development of the county plan in 1996, suggest that traffic volumes will increase significantly in the southern metropolitan area by 2020. The model also suggests that the new bridge and connecting streets will relieve pressure on the STH 172 and Claude Allouez bridges. Furthermore, the model shows a 2020 ADT of 38,900 is expected on a new southern bridge.

C. Runge stated that since 1996, traffic volumes have continued to rise on the STH 172 and Claude Allouez bridges, and this trend is likely to continue into the future.

C. Runge stated WisDOT recently modeled the area for 2035 and added an extensive mass transit element. Findings indicate that even with extensive transit enhancements, the model suggests that traffic volumes will increase to a point where a new Fox River bridge and connecting arterial street system will be necessary in the southern portion of the metropolitan area to effectively handle long-term transportation demand.

C. Runge drew three conclusions from the analysis:

1. A significant amount of development is planned in the southern portion of the metropolitan area.
2. Existing and future development will generate more traffic in the southern portion of the metropolitan area, which will place strain on existing bridges and streets.
3. Significant transit service enhancements are not projected to reduce traffic to a point where congestion will not exist.

C. Runge stated that the recommended remedy is a new Fox River bridge and connecting arterial street system in the southern portion of the metropolitan area to distribute traffic more evenly and improve accessibility for all modes (including pedestrian and bicyclists).

3. Discussion of methods of addressing future transportation demand in the southern portion of the metropolitan area.

C. Runge opened the floor for questions.

B. Patzke asked what the Level of Service (LOS) would be for the STH 172 and Claude Allouez bridges if a southern bridge was not built by 2020.

C. Runge stated that it would likely be LOS E or F.

J. Agee-Aguayo stated that Smart Growth plans had been completed and adopted by local units of government throughout the entire study area, including the county-wide plan.

C. Runge stated that it was during the development of the local plans that the future land use pattern was established.

J. Agee-Aguayo stated that with an aggressive transit element, only a small reduction in the number of trips would be realized. This is not unique to the Green Bay area.

B. Patzke noted that all of the Smart Growth plans recognize the southern bridge and arterial system.

K. Van De Hei asked about a possible interchange at Red Maple Road (CTH SB) and US 41.

64

C. Runge stated that this will be addressed in a separate study.

C. Runge stated that he was looking for a consensus from the attendees. Should we pursue the construction of a southern bridge and connecting arterial system as a result of traffic projections and projected land use?

J. Gerbitz stated that it was necessary to validate the model and suggested confirming the most recent model outputs with the Federal Highway Administration.

C. Runge stated that this has occurred. The model results had been presented to Stephanie Hickman of the Federal Highway Administration and have been extensively studied by the modeling staff at WisDOT.

J. Van Straten stated he absolutely agreed that a southern bridge and connecting arterial system was needed.

Mayor M. Walsh agreed, stating that we have aggressively prepared for this for years.

It was the consensus of the group that a southern bridge and connecting arterial system was needed.

4. Discussion of the initial steps in the environmental study process.

C. Runge asked the attendees if an Environmental Impact Statement (EIS) or an Environmental Analysis (EA) was needed.

B. Wallace stated that he agrees there is evidence of need. However, it is necessary to define what the system will look like in order to determine if an EIS or EA is necessary.

B. Wallace suggested if we are dealing with a long corridor, an EIS is in order. If we are just dealing with a river crossing, an EA may suffice.

M. Fleck asked for a definition of the corridor.

C. Runge stated the corridor was considered to be the STH 172/CTH GV interchange to the Packerland Drive (CTH EB)/Fernando Drive (CTH G) intersection.

B. Patzke stated that we should do an EIS. B. Patzke went on to say that the City of De Pere has dedicated the necessary right-of-way, WisDOT had purchased right-of-way and land has been removed from the tax rolls, and Brown County Highway has implemented access control. Overall, there has been significant investment in the corridor.

C. Runge stated that with an EIS, alternative bridge and arterial locations will be studied.

L. Au asked who was going to be paying for the project.

C. Runge stated that the Brown County Highway Department will pay for the EIS. The facilities will likely be financed with a combination of federal, state, county, and local funds.

J. Van Straten spoke in support of the identified corridor.

C. Runge stated that we would be required to look at alternatives.

J. Gerbitz asked for termini clarification.

C. Runge stated the corridor was an approximately eight-mile stretch that includes the area between the STH 172/CTH GV interchange and the Packerland Drive (CTH EB)/Fernando Drive (CTH G) intersection. This would also include a crossing at the East River.

J. Gerbitz agreed that these are logical termini for the project.

J. Agee-Aguayo asked what entity would have jurisdiction over the corridor.

C. Runge stated that it will likely be under Brown County's jurisdiction.

B. Wallace explained it will be necessary to evaluate various facility types. Projected traffic volumes will be key in determining if we should build a four or six lane facility.

C. Runge stated that traffic volumes are important but we will also look at land use and other characteristics.

M. Fleck stated that he has always assumed this would be a four-lane, 45 m.p.h., limited access facility.

C. Runge stated that this was correct.

B. Wallace stated that it will be easy to justify the need to cross the river. It will be more challenging to identify facility type. Perhaps a freeway beltline will be needed.

J. Gerbitz referred to US 41 and US 441 in the Appleton area. US 441 started out as a local arterial concept and ended up becoming a freeway beltline.

B. Wallace stated there will be a need to develop a range of alternatives.

C. Runge agreed and stated that seven alternatives were studied in the 1990s. Perhaps this study will include an eighth.

B. Wallace stated that planning should be made aware of new requirements outlined in SAFETEA-LU. This is also new for WisDOT staff.

J. Van Staten stated that safety is a concern. J. Van Straten indicated that it is important to divert trucks from downtown De Pere.

S. Burdette asked if this process would hold up work on CTH GV.

B. Lamers stated that the Brown County Highway Department will evaluate the condition of the road and make improvements as necessary.

C. Runge stated that this process will proceed aggressively and will be thorough.

M. Fleck cautioned if the southern bridge is built too far to the south, relief may not be realized on the STH 172 or Claude Allouez bridges.

R. Meerts suggested that we do not want to create another Ashwaubenon situation where US 41 and STH 172 bisect the community, making getting around more difficult.

R. Wagner suggested we want to get agencies to officially agree with the project's purpose and need elements. NEPA documentation is needed.

C. Runge asked for clarification.

64

R. Wagner stated that this could be part of the *Purpose and Need* section of the EIS.

J. Gerbitz suggested that staff get together with resource agencies (USFWL, EPA, DNR, etc.) to eliminate some of the alternatives, perhaps go from eight to three. The draft document will eventually have to go to the public for review before preferred alternative is selected.

M. Fleck asked if the designation of US 41 as an interstate has made a difference in the process.

J. Gerbitz stated that US 41 is already being treated as an interstate. A study would have been required either way.

C. Runge stated that a separate study called an Interchange Access Justification Report (IAJR) will be worked on concurrently with the EIS. There are eight criteria that must be addressed.

M. Walsh stated that WisDOT and FHWA see traffic as a priority. The communities involved see economic development as a priority. It is important that we cooperate. The thought that this facility may become a beltline is new. It is a potential threat to what we have been talking about all of these years. We feel like we are in limbo.

M. Walsh applauded the Brown County Highway Department and the Brown County Planning Commission for their work to date. M. Walsh hoped this work would not be wasted.

C. Runge stated we will utilize what we have completed to move forward.

J. Gerbitz stated that the identified corridor is where we may end up. Nobody said we would not end up there and that the work that has been completed will be wasted.

B. Wallace stated that the fact the corridor has been preserved will make it a very appealing alternative.

C. Lamine asked if there are any issues planning staff may be unaware of at this point.

B. Wallace stated that this process will also help determine when the facilities should be built.

K. Van De Hei stated that we are being put back in time. Why isn't our work enough for WisDOT and FHWA?

B. Wallace stated that if you feel you did enough planning, build it.

C. Runge asked the representatives from the resource agencies what they thought we needed to do.

A. Stranz from the DNR stated that we need to look at impacts on fish, sediment, navigation issues, the fox locks, endangered species (such as a specific species of turtles), stormwater, local habitat, air management issues and calculations, trails, trail opportunities, wetlands, tributaries, and upland habitat continuity.

L. Au from the US Fish and Wildlife agreed with the statements of A. Stranz. L. Au also added that the cumulative impact on the Fox River will need to be examined.

J. Gerbitz stated that the future land use identification work will be useful in this process.

M. Walsh reminded the group that 10 years ago, WisDOT staff sat down with us to set aside the existing corridor and were very helpful.

B. Patzke stated it is important to recognize the millions of dollars already spent on this corridor as part of the process.

5. Other matters.

None

6. Adjourn.

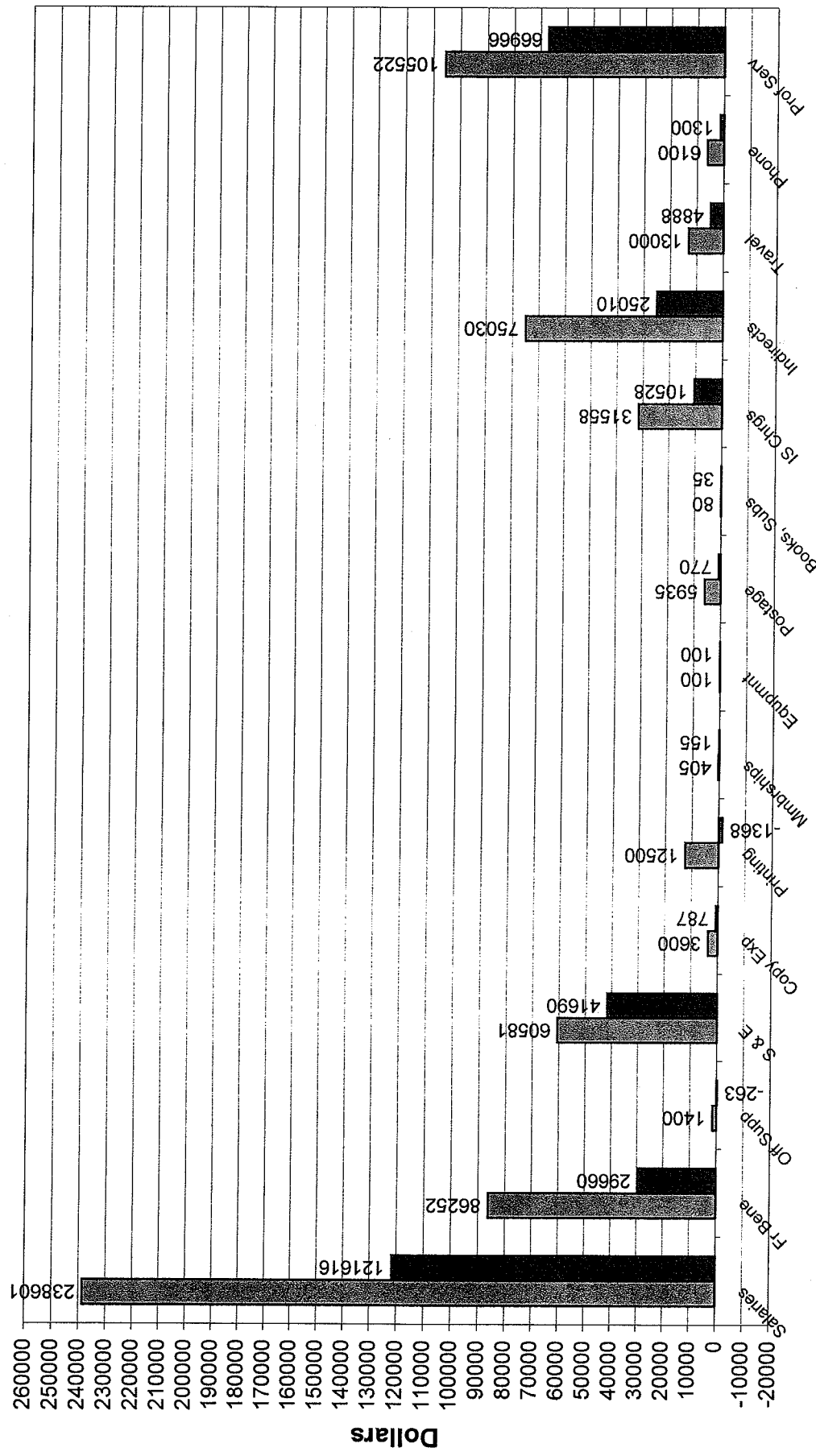
C. Runge closed the meeting at 11:29 a.m.

60

UW-Extension Monthly Budget Status - As of August 31, 2006

	Salaries	Fr Bene	Off Supp	S & E	Copy Exp	Printing	Mmbships	Equipmnt	Postage	Books, Subs	IS Chrgs	Indirects	Travel	Phone	Prof Serv
Budgeted Amount	238601	86252	1400	60581	3600	12500	405	100	5935	80	31558	75030	13000	6100	105522
Amount Remaining	121616	29660	-263	41690	787	-1368	155	100	770	35	10528	25010	4888	1300	66966

Expenditures



Legend:
 [Hatched Box] Budgeted Amount
 [Solid Black Box] Amount Remaining

Line Item

69



26

WASTE MANAGEMENT
Northeast Wisconsin
P.O. Box 12560
Green Bay, WI 54307-2560



September 21, 2006

Mr. Brian Lamers
Highway Commissioner
Brown County Highway Department
2198 Glendale Avenue
Green Bay, WI 54303

Dear Mr. Lamers

In response to your letter I received September 21, 2006 regarding the use of CTH G, from CTH Z to the south County Line by Waste Management vehicles. I have rerouted our truck traffic to help minimize the deterioration of that section of CTH G; our new route utilizes CTH GV, CTH X, to state highways 57 south, to US-10 in Forest Junction.

This reroute went into effect July 28, 2006 after our phone conversation on July 25, 2006 and has remained as our primary truck route since that time. Waste Management is committed to working with communities on all issues and has taken these actions to do our part in helping with this issue.

Please feel free to contact me with any questions at (920) 468-5000.

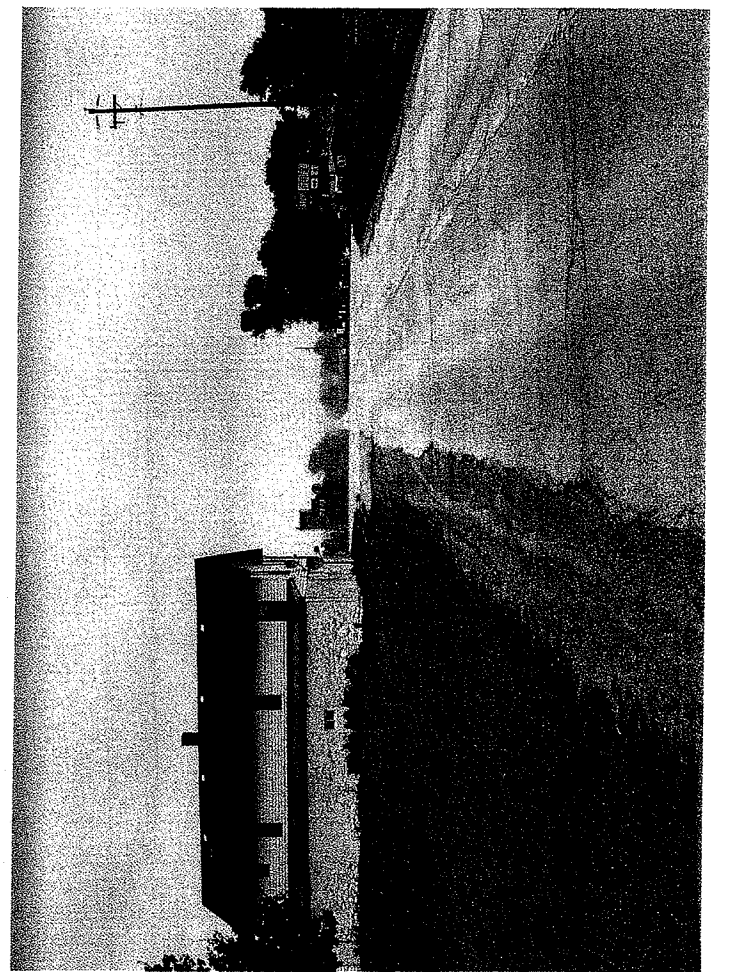
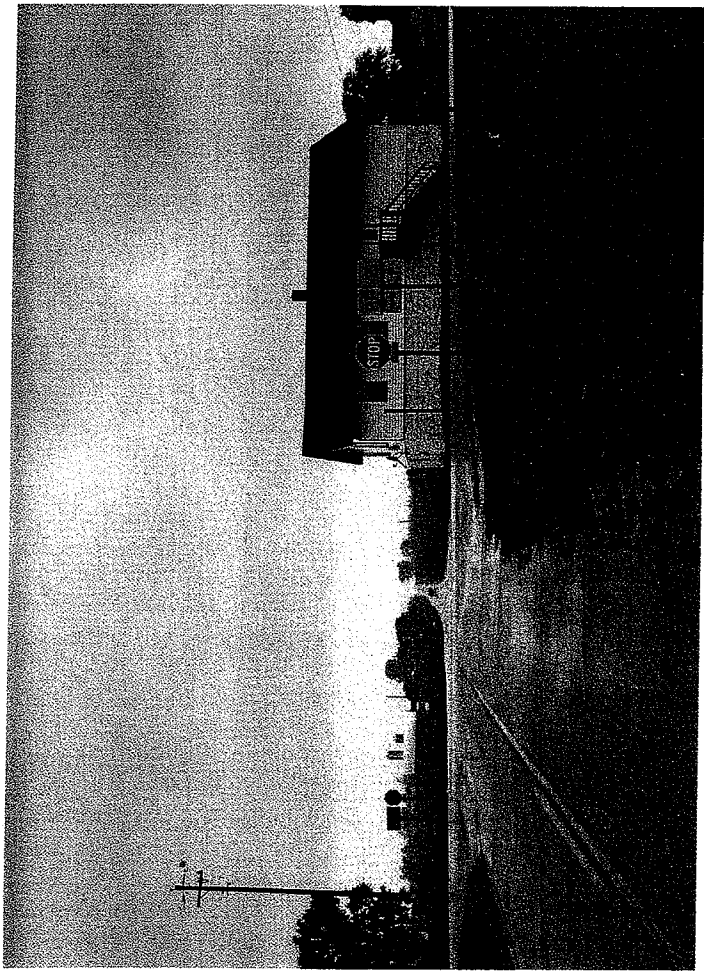
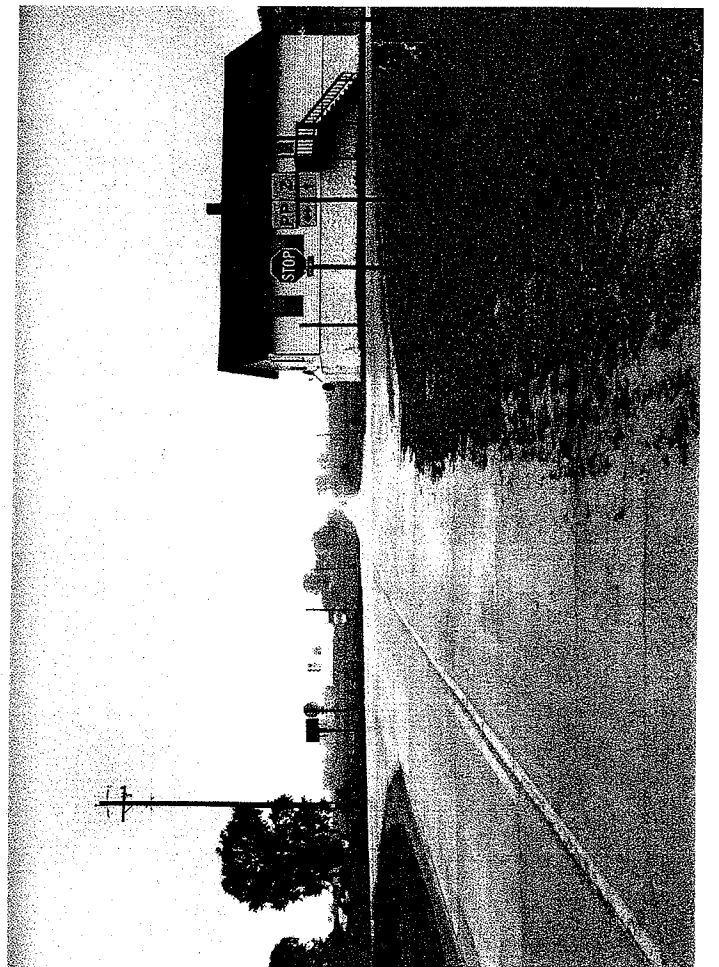
Sincerely,
Waste Management

A handwritten signature in black ink, appearing to read "Shane Lestrud". The signature is fluid and cursive, with a long horizontal stroke extending to the right.

Shane Lestrud
Route Manager, Waste Management of Northeast Wisconsin

From everyday collection to environmental protection, Think Green® Think Waste Management.

22



BROWN COUNTY SHERIFF'S DEPARTMENT

Accidents by Location
for the Town of Holland
CTH PP & CTH Z

January 1, 1997 - September 20, 2006

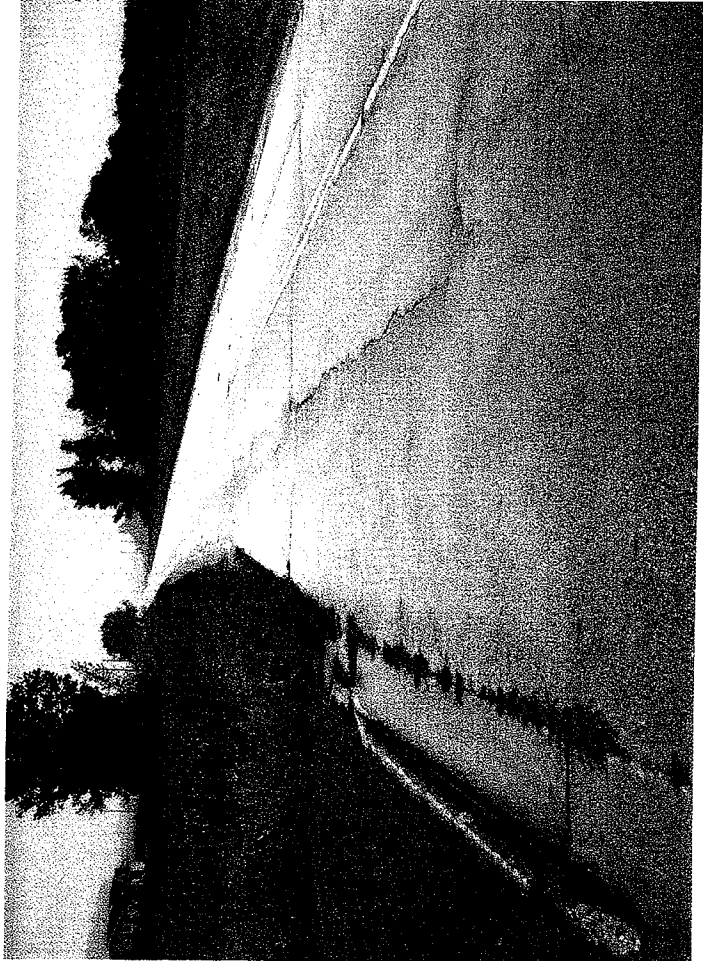
<u>Event Number</u>	<u>Date & Time</u>	<u>Township</u>	<u>Location</u>	<u>Cross Street</u>	<u>Injured</u>	<u>Killed</u>	<u>First Harmful Event</u>	<u>Vehicles</u>
LBR051215043911	12/15/2005 8:16	HOLLAND	CTH PP	HILL RD	1	0	OTHER FIXED OBJECT	1
LBR051024037306	10/24/2005 23:30	HOLLAND	LEDGETOP RD	HILL RD	0	0	CULVERT	1
LBR050707023077	7/7/2005 20:45	HOLLAND	7351 CTH PP		0	0	CULVERT	1
LBR050319008905	3/19/2005 4:00	HOLLAND	CTH PP	CTH Z	0	0	OVERTURN	1
LBR050220005794	2/20/2005 15:03	HOLLAND	HILL RD	CTH PP	0	0	OTHER FIXED OBJECT	1
LBR041114043545	11/14/2004 18:00	HOLLAND	HILL RD	CTH PP	0	0	DEER	1
LBR040913035431	9/13/2004 5:10	HOLLAND	CTH PP	CTH Z	0	0	DEER	1
LBR040820032140	8/20/2004 17:01	HOLLAND	HILL RD	CTH PP	0	0	MOTOR VEHICLE IN TRANSPORT	1
LBR040604020905	6/4/2004 10:44	HOLLAND	CTH PP	CTH Z	0	0	MOTOR VEHICLE IN TRANSPORT	2
LBR040312009935	3/12/2004 18:54	HOLLAND	CTH PP	CTH Z	3	1	DEER	3
LBR031210045211	12/10/2003 20:30	HOLLAND	CTH PP	CTH PP	0	0	DEER	1
LBR030617021815	6/17/2003 1:15	HOLLAND	CTH Z	N 1991 HILL RD	1	0	OTHER FIXED OBJECT	1
LBR021022201951	10/22/2002 2:45	HOLLAND	CHWY PP	CTH PP	0	0	DEER	1
LBR020319200529	3/19/2002 2:06	HOLLAND	CHWY PP	CHWY Z	0	0	OTHER ANIMAL	1
LBR011228102453	12/28/2001 17:20	HOLLAND	CHWY Z	CHWY Z	0	0	OVERTURN	1
LBR010313100540	3/13/2001 4:40	HOLLAND	CHWY Z	CHWY PP	0	0	DEER	1
LBR990308000564	3/8/1999 18:14	HOLLAND	CHWY Z	CHWY PP	0	0	DEER	1
LBR981123002163	11/23/1998 17:15	HOLLAND	1745 CHWY Z	CHWY PP	0	0	DEER	1
LBR971123002560	11/23/1997 2:20	HOLLAND	CHWY Z	HILL RD	0	0	DEER	1
			CHWY Z	CHWY PP	0	0	H&R FIXED OBJECT	1

5 1

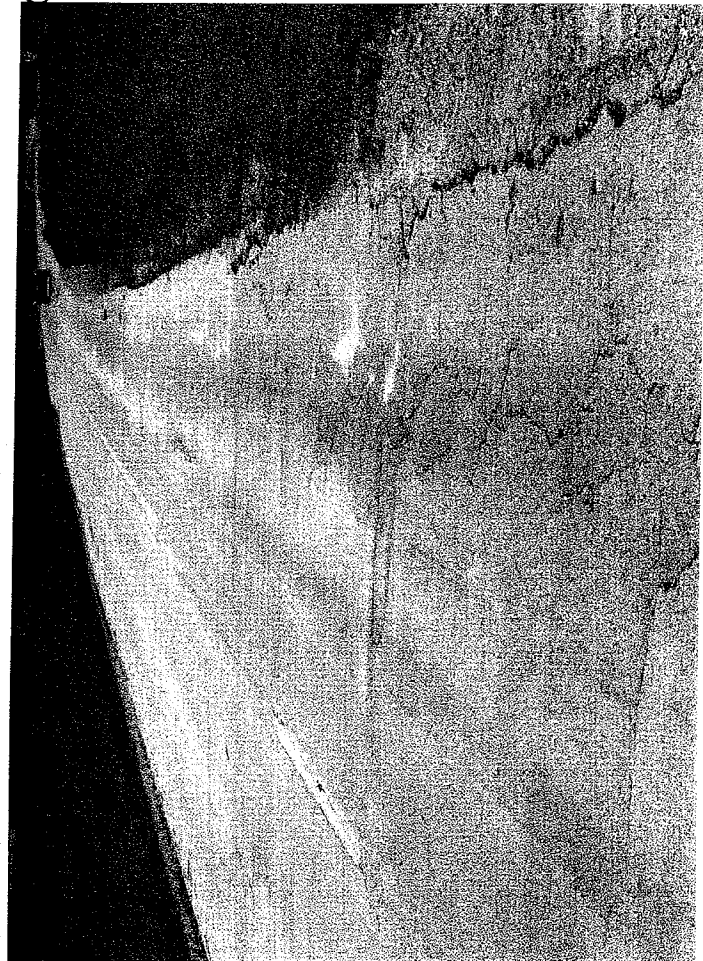
19 accidents
8 Deer

23

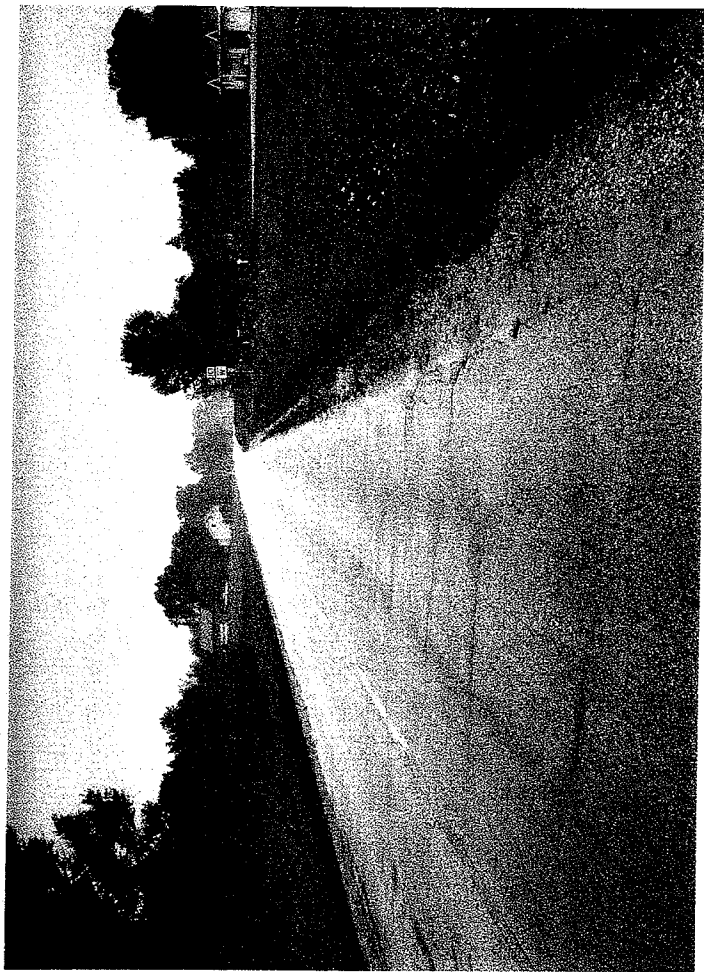
2



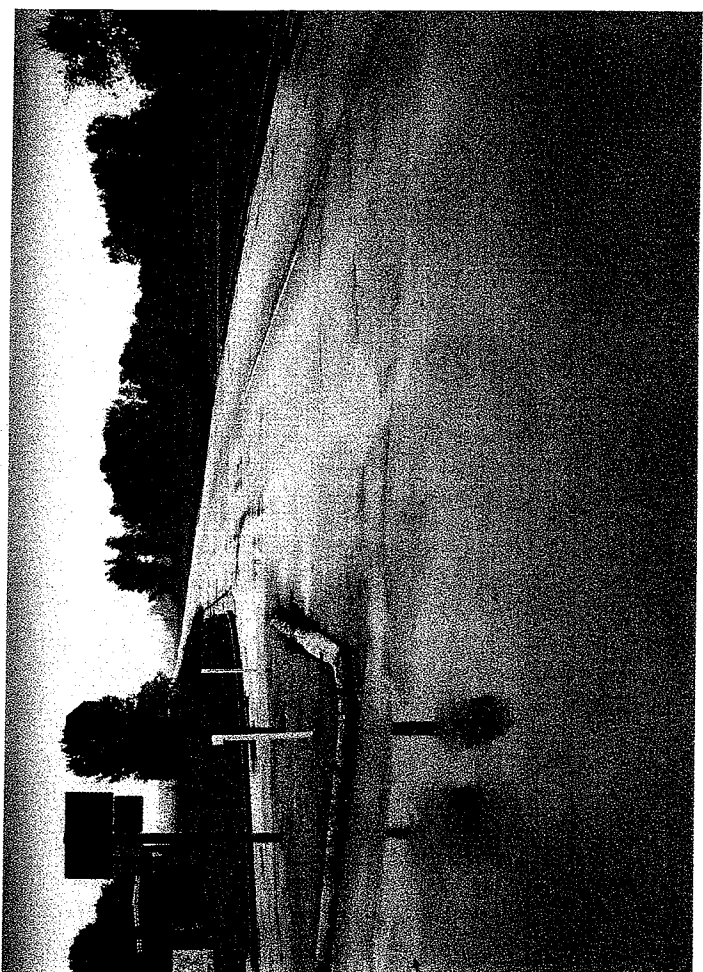
4

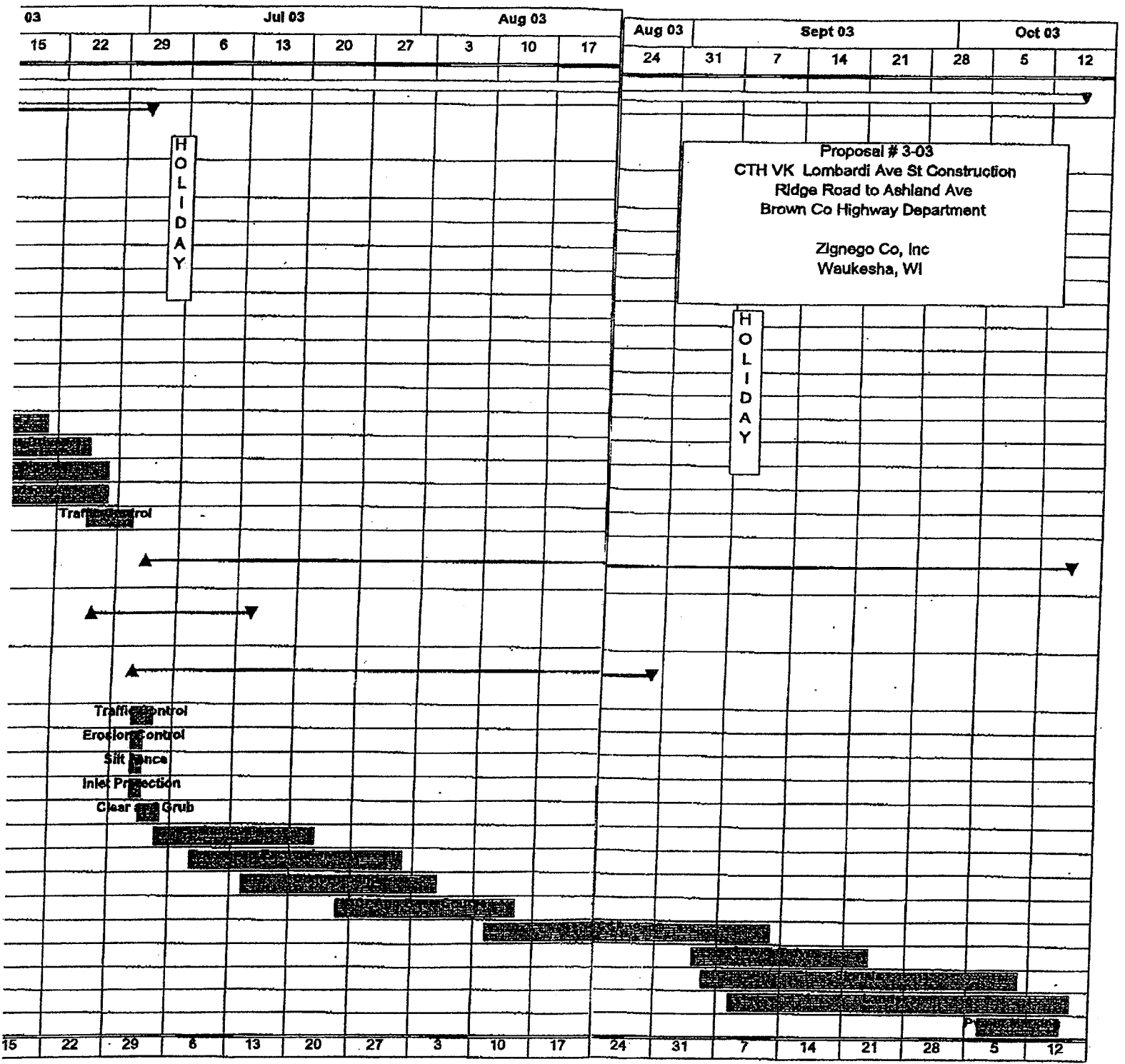


1



3





	Activity Name	Start Date	Finish Date	Duration (Work Days)	Qty	Apr 03					May 03		May 03						
						30	6	13	20	27	4	11	18	25	1	8			
1	CTH VK Grn Bay Lombardi Ave	3/31/03	10/15/03	143.00															
2	Phase 1a South Side Lombardi Ave	3/31/03	7/1/03	67.00															
3	Inc Oneida St and Holmgren Way																		
4	Traffic Control	3/31/03	4/1/03	2.00															
5	Erosion Control	4/1/03	4/1/03	1.00															
6	Silt Fence	4/1/03	4/1/03	1.00															
7	Inlet Protection	4/1/03	4/1/03	1.00															
8	Clear and Grub	4/2/03	4/3/03	2.00	170														
9	Removals	4/1/03	4/15/03	11.00	24,000														
10	Excavation	4/4/03	4/30/03	19.00	21,000														
11	Underground	4/9/03	5/13/03	25.00															
12	Cr Agg Base Course	5/12/03	5/27/03	12.00	12,000														
13	PCCP 9 in	5/21/03	6/20/03	23.00	23,000														
14	Sdwks Drives	6/11/03	6/25/03	11.00															
15	Signals	6/13/03	6/27/03	11.00															
16	Landscape	6/10/03	6/27/03	14.00	11,000														
17	Traffic Control	6/25/03	6/30/03	4.00															
18	Phase 2a North Side Lombardi Ave	7/2/03	10/15/03	76.00															
19	Lombardi Ave comp Norwood Ave East end of job July 15	6/26/03	7/14/03	13.00															
20	Ridge Road to Oneida St by Sept 1 (west end)	7/1/03	8/29/03	44.00															
21	Traffic Control	7/1/03	7/3/03	3.00															
22	Erosion Control	7/1/03	7/2/03	2.00															
23	Silt Fence	7/1/03	7/2/03	2.00															
24	Inlet Protection	7/1/03	7/2/03	2.00															
25	Clear and Grub	7/2/03	7/4/03	3.00															
26	Removals	7/4/03	7/22/03	13.00	24,000														
27	Excavation	7/8/03	8/1/03	19.00	21,000														
28	Underground	7/14/03	8/5/03	17.00															
29	Cr Agg Base Course	7/25/03	8/14/03	15.00	12,000														
30	PCCP 9 in	8/11/03	9/12/03	25.00	23,000														
31	Sdwks Drives	9/4/03	9/23/03	14.00															
32	Signals	9/5/03	10/10/03	26.00															
	Landscape	9/8/03	10/16/03	29.00															
	Pvmt Marking	10/6/03	10/15/03	8.00															
				1:658.00															
						30	6	13	20	27	4	11	18	25	1	8			

HOLIDAY

7/6