

**PROCEEDINGS OF THE BROWN COUNTY
LAND CONSERVATION SUBCOMMITTEE**

Pursuant to Section 18.94 Wis. Stats., a regular meeting of the **Brown County Land Conservation Subcommittee** was held on Monday, January 27, 2014 in Room 161, UW Extension, 1150 Bellevue Street , Green Bay, WI

Present: Chairman Dantine, Supervisor Bernie Erickson, Supervisor Tom Sieber,
Supervisor Dave Landwehr, Supervisor Dave Kaster, Norb VanDeHei,

Excused:

Also Present: Jim Jolly, Lori Van Hulle and other interested parties

I. Call Meeting to Order

The meeting was called to order by Chairman Dantine at 6:00 p.m.

II. Approve/Modify Agenda.

Motion made by Norb VandeHei, seconded by Supervisor Kaster to approve.

Vote taken. MOTION CARRIED UNANIMOUSLY.

III. Approve/modify minutes of Land Conversation Subcommittee of November 25, 2013.

Motion made by Supervisor Sieber, seconded by Supervisor Kaster to approve.

Vote taken. MOTION CARRIED UNANIMOUSLY.

Comments from the Public

1. Budget Status Financial Report for November, 2013.

Motion made by Supervisor Erickson, seconded Supervisor Landwehr to receive and place on file. Vote taken. MOTION CARRIED UNANIMOUSLY.

2. Great Lakes Restoration Initiative Update – Lori Van Hulle, Area GLRI Coordinator for NRCS.

Jolly introduced Lori Van Hulle from NRCS. He informed that the county had been working jointly with NRCS to implement the contribution agreement that was signed between them. Where their program overlapped with Working Lands Initiative landowners, that's where they were making their coordinated efforts spending a lot of money. Van Hulle provided a PowerPoint (attached) regarding what was happening in the basin from the NRCS standpoint.

Following the presentation, Sieber questioned if there was a mechanism for follow-up with farmers. Van Hulle responded that their conservation practices had life expectancies and the contracts expected them to keep that practice in place for the life of the practice. They don't follow-up after the contract expired, they didn't have the staff to do it. Sieber stated that Brown County had a really good GIS Department if they got overwhelmed. She responded that they were working closely on some projects with the local. Jolly stated they were going to be working with Brown County GIS/LIO Coordinator Jeff DuMez, he was going to guide them on

creating a GIS tracking system so that once these waterways and conservation practices go in they can visually track them on GIS and have all the attributes along with them, they want to have something like that in place by the end of this year. So 15-years from now you can see what historically had been done on that land. What they had in the past was a 10-year Operation Maintenance Agreement with the landowners and every time they put conservation work in, they had gone back as best as they could. There was a certain percentage of spot checking they did every year.

Norb Vande Hei stated that he had worked with John and Julie from NRCS in the summer on his farm and he told them that land was very expensive these days and if they could cut back a little bit narrower on some of the waterways, especially where they didn't have a lot of rolling ground and a hillside coming into the water stream, he could see that point there but when you had fairly level ground like in Glenmore, you don't get the washing in there, so if you could narrow up the strip rather than leave 300', he felt you'd get more cooperation out there because you can't leave 300' across the 40 lay and not be able to crop it. You could take the grass off of it but you were still not able to root crop it. He stated that he had talked with Jolly on it and he was willing to do it, if they could keep the space narrower. Jolly felt they needed to make sure that what they did was affective. Vande Hei stated that they had industrial people spreading stuff that would go down into the stream. They were hauling out there now on top of a foot of snow and ice. The blame goes on the farmer but it wasn't coming from the farmer, a lot of it was industrial waste.

Van Hulle informed that there would be another GLRI signup coming up very soon and they were looking to obligate another \$2.6 million in the lower Fox. The program was not going away. They were also working on the next five-year plan for GLRI for 2015-2019. They were expecting to get dollars in the federal budget for some time to keep working on phosphorus.

To follow-up with what Vande Hei was talking about, Dantine questioned if they looked at different ways to do things or avenues besides waterways. Van Hulle stated that they may be able to do some of that with the demonstration farms to test out things they hadn't normally done with their conservation practices which was the whole idea of the demo farms, to be innovative and try to do things different than what had been done in the last 60 years.

Motion made by Supervisor Erickson, seconded by Supervisor Sieber to receive and place on file. Vote taken. MOTION CARRIED UNANIMOUSLY.

3. Director's Report.

Jolly stated that the contribution agreements that they had with NRCS added two staff to their department for 2014. They started advertising as soon as the budget was over but they still don't have any qualified candidates. They were struggling to find people who could do the work. They keep on reposting and he will let them know when they get someone. Erickson questioned if they had to be experienced in the field, Jolly responded they needed them to hit the ground running, they couldn't afford to sit and train. It was only a two-year position and Erickson felt people wouldn't leave a permanent position for something temporary. He felt these were stepping stones positions. Jolly informed that they had posted to all of the universities that had agriculture, through the colleges and through alumni associations. They had posted to every county in the state and now they were posting on trade organizations. They were doing everything they could to get people in there.

The working agreement with NRCS was going extremely well. They were cooperating; the staff that they had came to their office ever two-weeks to determine who was working on what and where. They could be proud of the accomplishment. They made the decision to make that happen.

They were close to signing the five-year contribution agreement for the demo farms, which will kick off this year. They had landowners interested in participating so that was pretty exciting.

They put two monitoring stations in before winter. They had another monitoring station that had been in for a while so they will be able to get results relatively quick.

**Motion made by Supervisor Erickson, seconded by N. Vande Hei to receive and place on file.
Vote taken. MOTION CARRIED UNANIMOUSLY.**

4. Adjourn.

**Motion made by Supervisor Sieber, seconded by Landwehr to adjourn at 6:23 p.m.
Vote taken. MOTION CARRIED UNANIMOUSLY.**

Respectfully submitted,

Alicia A. Loehlein
Recording Secretary



United States
Department of
Agriculture

Natural Resources Conservation Service

Great Lakes Restoration Initiative Wisconsin (2010 - 2013)



GLRI in Wisconsin

NRCS in Wisconsin has focused Great Lakes Restoration Initiative (GLRI) conservation program funds in the Lower Fox, Manitowoc-Sheboygan, and the Milwaukee watershed, which border the shores of Lake Michigan. Wisconsin's GLRI Phosphorus Reduction Pilot Initiative is focused in nine 12-digit HUCs within the Lower Fox watershed (see map below).

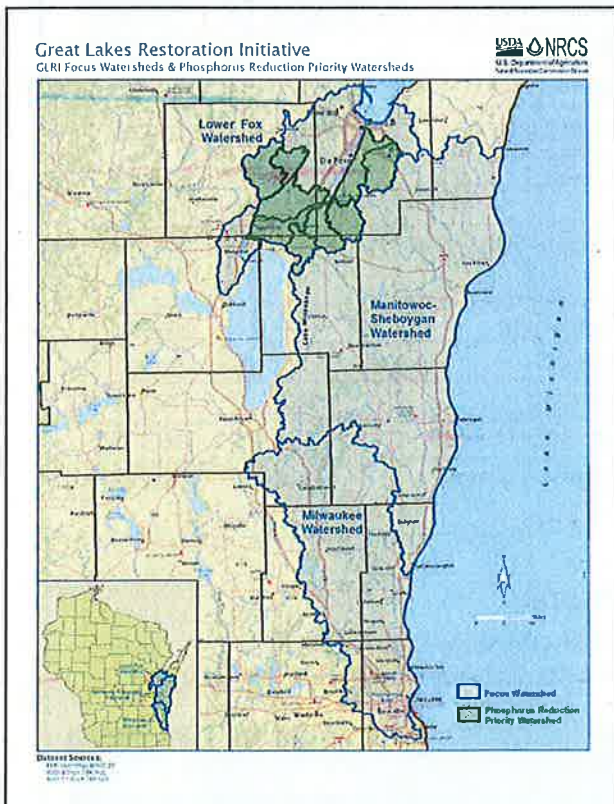
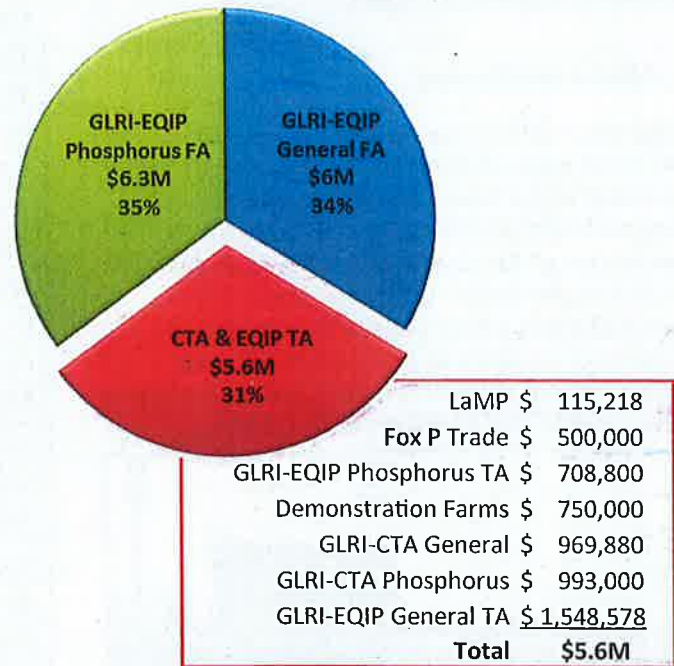
The NRCS focus for GLRI in Wisconsin is to:

- Implement core conservation practices in a systems approach in targeted watersheds to address surface water quality resource concerns associated with livestock operations.
- Collaborate with conservation partners to accelerate conservation practice implementation and leverage federal funding.

NRCS Photos: (L) Lake Michigan; (C) Dairy farm in the Manitowoc-Sheboygan watershed; (R) NRCS District Conservationist Josh Odekirk (left) presents Terry Groth of Farm 45 a farm sign recognizing his participation in the GLRI.

GLRI Funding

During the period from federal fiscal year 2010 to 2013, NRCS has received over \$17.9 million in GLRI funding from the US Environmental Protection Agency (EPA).



Accelerating Conservation Funding in GLRI Priority Watersheds

Financial Assistance (FA) funding to NRCS through GLRI has nearly tripled the amount of funding assistance in the Lower Fox, Manitowoc-Sheboygan, and Milwaukee watersheds over the past 4 years.

NRCS Farm Bill FA funding (2010-2013): \$ 6.3M
 NRCS GLRI FA funding (2010-2013): **\$12.3M**
 Total funding: **\$18.6M**



Contribution Agreements

GLRI-EQIP Technical Assistance: Brown County LWCD, Sheboygan County LWCD, Outagamie County LCD, Ozaukee County LWMD, Washington County LWCD

Conservation Technical Assistance: Glacierland RC&D, Ozaukee County LWMD, Wisconsin DATCP

Great Lakes Commission: Establish Phosphorus Credit Trading Framework (Fox P Trade) for the Lower Fox Watershed

Great Lakes Commission: Establish Demonstration Farms Network in the Lower Fox Watershed

Sand County Foundation: Operate Watershed-Scale Nutrient Management Project

Edge-of-Field Monitoring

In collaboration with US Geological Survey (USGS) and the EPA, three edge-of-field monitoring stations have been installed in the Lower Fox watershed. NRCS is providing technical and financial assistance for implementation of the conservation practices that will be installed on the farms. Data from the monitoring stations will be utilized to evaluate the effectiveness of a system of practices in reducing concentrations and loads of targeted pollutants; and to calibrate, validate, and verify predictive models.



NRCS Photos: (L) Grassed Waterway; (C) Waste Storage Facility; (R) NRCS Soil Conservationist Julie Hager (left) presents Scott Theunis of Tinedale Cropping a farm sign recognizing his participation in the GLRI.

Delivering Results

NRCS has obligated 276 GLRI-EQIP contracts to date, currently totaling \$11.3 million. Over 60,000 acres of land are currently enrolled in GLRI-EQIP contracts. Fifty-four different conservation practices have been contracted. The following are the top conservation practices listed by dollar amount:

Conservation Practice	Contracted Amount	Obligation
Waste Storage Facility	49	\$ 3,739,289
Waste Transfer	68	\$ 989,786
Heavy Use Area Protection	54 ac	\$ 889,476
Integrated Pest Management	17,333 ac	\$ 862,399
Waste Treatment	10	\$ 718,614
Nutrient Management	21,556 ac	\$ 692,186
Waste Facility Closure	26	\$ 498,409
Grassed Waterway	35 mi	\$ 458,535
Comprehensive Nutrient Management Plan	58	\$ 378,583
Cover Crop	9,812 ac	\$ 269,597
Solid Liquid Waste Separation Facility	3	\$ 186,900
Roof Runoff Structure	73	\$ 101,232
Stream Crossing	43	\$ 94,905
Prescribed Grazing	425 ac	\$ 39,975
Tree & Shrub Establishment	66 ac	\$ 38,775
Water & Sediment Control Basin	44	\$ 38,483

Program Manager

Tom Krapf, Assistant State Conservationist
608-662-4422 ext. 232 (tom.krapf@wi.usda.gov)

For more information, visit: www.wi.usda.gov
USDA is an equal opportunity provider and employer.



United States Department of Agriculture
Natural Resources Conservation Service



Phosphorus Reduction Priority Watershed

Lower Fox

Lori Van Hulle
Area GLRI Coordinator
USDA Natural Resources Conservation Service
Wisconsin

January 2014



United States Department of Agriculture
Natural Resources Conservation Service



Lower Fox Watershed



Lower Fox Watershed

Watershed Area: 403,657 acres

Landuse: 50% agriculture
35% urban
15% natural forest &
wetlands



United States Department of Agriculture
Natural Resources Conservation Service



Phosphorus Reduction Priority Area

Nine 12-digit HUCs in Lower Fox Watershed

Project Area: 221,436 acres
(55% of Lower Fox Watershed)

3

United States Department of Agriculture
Natural Resources Conservation Service



Why Focus Conservation Efforts in the Lower Fox Watershed?



1

Lower Fox Watershed

The Fox River is the **#1 Contributor of Phosphorus** to Lake Michigan; and the **3rd Largest** contributor of Sediment to Lake Michigan of all tributary streams (Source: USGS Water Resources)



Table 6. Sources of baseline TP loading in the LFR Basin

Source	Total Phosphorus (lb/yr)
Natural Background	3,639
Agriculture	251,382
Urban (non-regulated)	15,960
Urban (regulated MS4)	65,629
Construction	7,296
General Permits	2,041
Industrial WWTFs	114,426
Municipal WWTFs	87,160
TOTAL (in-basin)	549,703
Lake Winnebago	716,954
TOTAL (in-basin + Lake Winnebago)	1,266,657

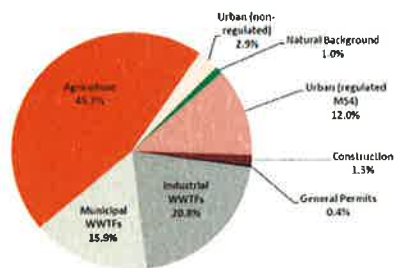


Figure 18. Sources of baseline TP loading in the LFR Basin

Lower Fox Watershed

Source of Total Phosphorus Loading

Agriculture:
251,382 lbs/yr

United States Department of Agriculture
Natural Resources Conservation Service



NRCS Efforts in Lower Fox Watershed (Fiscal Year 2012 - 2013)

GLRI Phosphorus Reduction Pilot
Established in Fiscal Year 2012



United States Department of Agriculture
Natural Resources Conservation Service

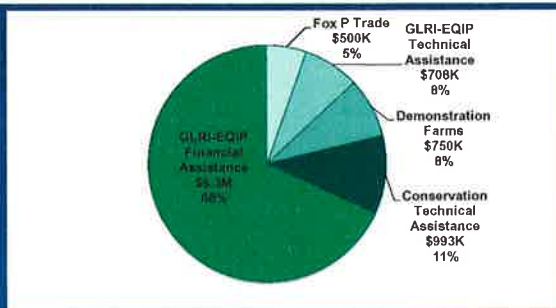


Wisconsin NRCS Highlights

- GLRI-EQIP Sign-Ups
- Fox P Trade
- Demonstration Farms
- NRCS GLRI Dedicated Staff
- Edge-of-Field Monitoring
- Contribution Agreements
- Conservation Technical Assistance

EPA GLRI Funding to NRCS (Wisconsin) Phosphorus Reduction Pilot Project

Funding Type	Fund Year	CTA (01R)	EQIP FA (76R)	EQIP TA (76R)	Total CTA	Total EQIP	Total
Phosphorus Reduction	12/13	\$ 591,600	\$ 3,300,000	\$ 400,400	\$ 591,600	\$ 3,700,400	\$ 4,292,000
Phosphorus Trading Pilot	12/13	\$ 500,000	\$ -	\$ -	\$ 500,000	\$ -	\$ 500,000
Phosphorus Reduction	13/14	\$ 401,400	\$ 3,000,000	\$ 308,400	\$ 401,400	\$ 3,308,400	\$ 3,709,800
Demonstration Farms	13/14	\$ 750,000	\$ -	\$ -	\$ 750,000	\$ -	\$ 750,000
Total		\$ 2,243,000	\$ 6,300,000	\$ 708,800	\$ 2,243,000	\$ 7,008,800	\$ 9,251,800

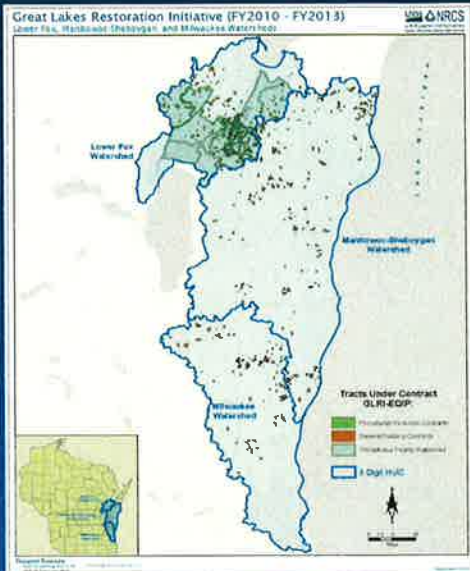


GLRI-EQIP Phosphorus Reduction Contracts

Sign-Up	Contracts	Contract Acres	Funds Obligated	Payments made to Date
FY12	48	19,785	\$ 3,092,687	\$ 924,209
FY13	68	14,562	\$ 2,836,296	\$ 297,798
Total	116	34,347	\$ 5,928,983	\$ 1,222,007

ProTracts Data as of
12/6/2013





GLRI-EQIP Land Under Contract (FY10-FY13 Contracts)

Core Conservation Practice: Nutrient Management



5,550 acres under
contract

15 Comprehensive
Nutrient
Management Plans

26

United States Department of Agriculture
Natural Resources Conservation Service



Core Conservation Practice: Cover Crop

4,800 acres contracted



13

United States Department of Agriculture
Natural Resources Conservation Service



Core Conservation Practice: Grassed Waterway

28 miles contracted



14

2
1

United States Department of Agriculture
Natural Resources Conservation Service







Fox P Trade

Goals

- Establish trading framework for Lower Fox
- Strong partnership effort
- Credit trading to begin in 2016
- To be consistent with other nutrient trading programs and replicable in other watersheds/states.

15

United States Department of Agriculture
Natural Resources Conservation Service

Demonstration Farms

Goals

- Establish two to four demonstration farms within the Lower Fox Watershed to test new and standard conservation systems in reducing phosphorus and sediment
- Establish an efficient mechanism to share this technology and information with farmers, agribusiness, conservation agencies, and the public
- Create opportunities for others to test their research, technical and program ideas at the demonstration farms
- Share information and lessons learned from the Lower Fox Watershed throughout the Great Lakes basin

16

NRCS GLRI Dedicated Staff



Wisconsin GLRI Dedicated Staff:

- 2 Permanent Soil Conservationists
- 3 Term Soil Conservationists (being converted to permanent)
- 1 Permanent Soil Conservation Technician
- 1 GIS Specialist

Julia Hager (L), NRCS Term Soil Conservationist presents Scott Theunis of Tinedale Cropping a farm sign recognizing his participation in the Great Lakes Restoration Initiative.

17

Edge of Field Monitoring



18

2
A

United States Department of Agriculture
Natural Resources Conservation Service

USDA NRCS


NRCS Contribution Agreements

- Brown County Land & Water Conservation Department
 - Strategic Watershed Action Team
 - GLRI-EQIP Technical Assistance
- Outagamie County Land Conservation Department
 - Strategic Watershed Action Team
 - GLRI-EQIP Technical Assistance
- Glacierland Resource Conservation & Development
 - Direct Outreach and Develop Managed Grazing Plans
- Great Lakes Commission
 - Fox P Trade
 - Demonstration Farms


19

United States Department of Agriculture
Natural Resources Conservation Service

USDA NRCS



Questions



20

United States Department of Agriculture
Natural Resources Conservation Service



The U.S. Department of Agriculture (USDA) prohibits discrimination in all of its programs and activities on the basis of race, color, national origin, age, disability, and where applicable, sex, marital status, familial status, parental status, religion, sexual orientation, political beliefs, genetic information, reprisal, or because all or part of an individual's income is derived from any public assistance program. (Not all prohibited bases apply to all programs.) Persons with disabilities who require alternative means for communication of program information (Braille, large print, audiotape, etc.) should contact USDA's TARGET Center at (202) 720-2600 (voice and TDD).

To file a complaint of discrimination, write to USDA, Assistant Secretary for Civil Rights, Office of the Assistant Secretary for Civil Rights, 1400 Independence Avenue, S.W., Stop 9410, Washington, DC 20250-9410, or call toll-free at (866) 632-9992 (English) or (800) 877-8339 (TDD) or (866) 377-8642 (English Federal-relay) or (800) 845-6136 (Spanish Federal-relay). USDA is an equal opportunity provider and employer.

USDA is an equal opportunity provider and employer

21